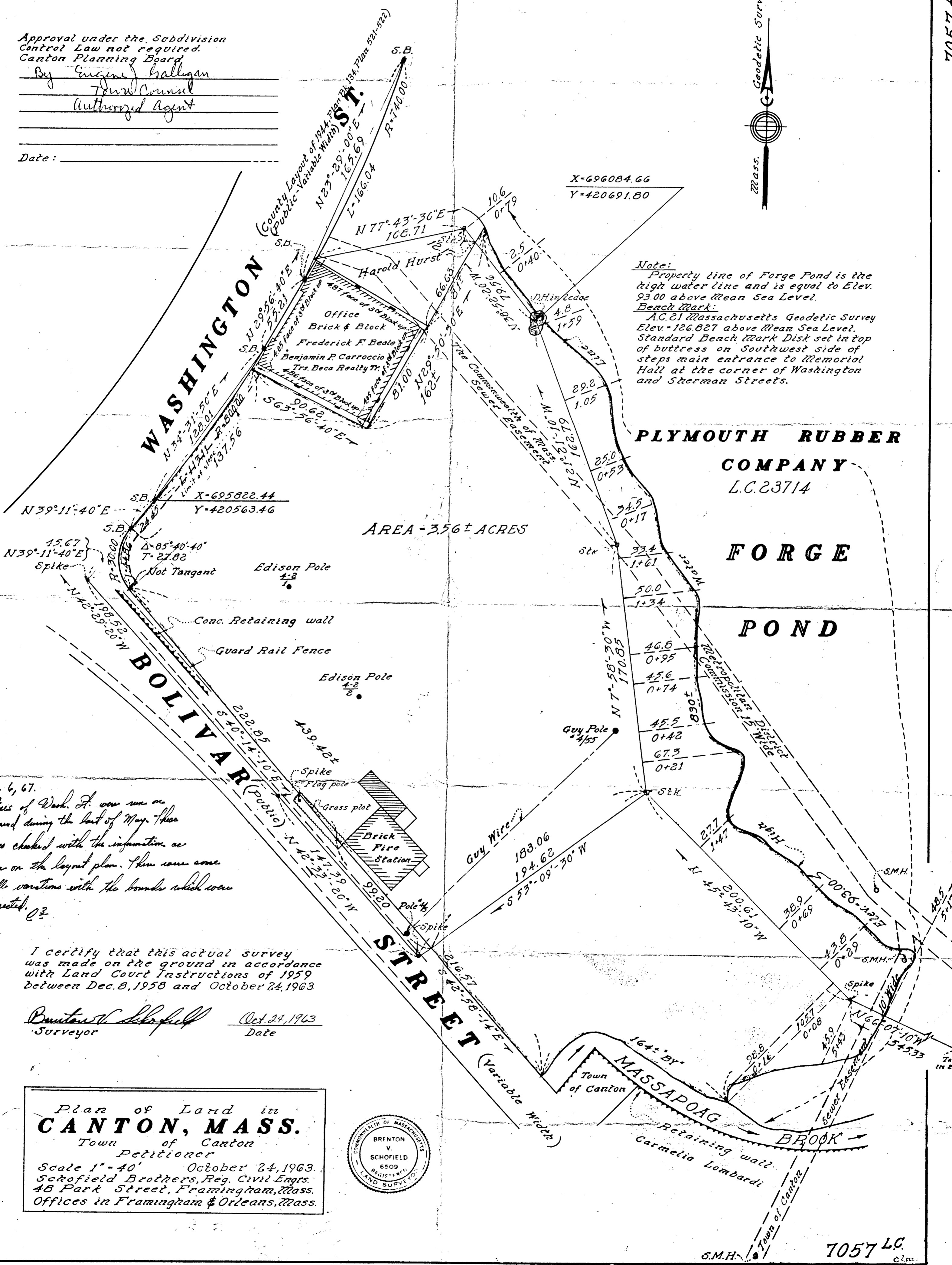


Approval under the Subdivision Control Law not required.
Canton Planning Board

By Engineer Halligan
Town Council
Authorized Agent

Date: _____



Note:
Property line of Forge Pond is the high water line and is equal to Elev. 93.00 above Mean Sea Level.
Bench Mark:
A.C. 21 Massachusetts Geodetic Survey Elev. = 126.827 above Mean Sea Level. Standard Bench Mark Disk set in top of buttress on Southwest side of steps main entrance to Memorial Hall at the corner of Washington and Sherman Streets.

AREA - 3.56 ± ACRES

June 6, 67.
Lines of Wash. St. were run on ground during the last of May. These lines checked with the information as shown on the layout plan. There were some small variations with the bounds which were corrected.

I certify that this actual survey was made on the ground in accordance with Land Court Instructions of 1959 between Dec. 8, 1958 and October 24, 1963

Brenton V. Schofield Oct. 24, 1963
Surveyor Date

Plan of Land in
CANTON, MASS.
Town of Canton
Petitioner
Scale 1" = 40' October 24, 1963.
Schofield Brothers, Reg. Civil Engrs.
48 Park Street, Framingham, Mass.
Offices in Framingham & Orleans, Mass.

