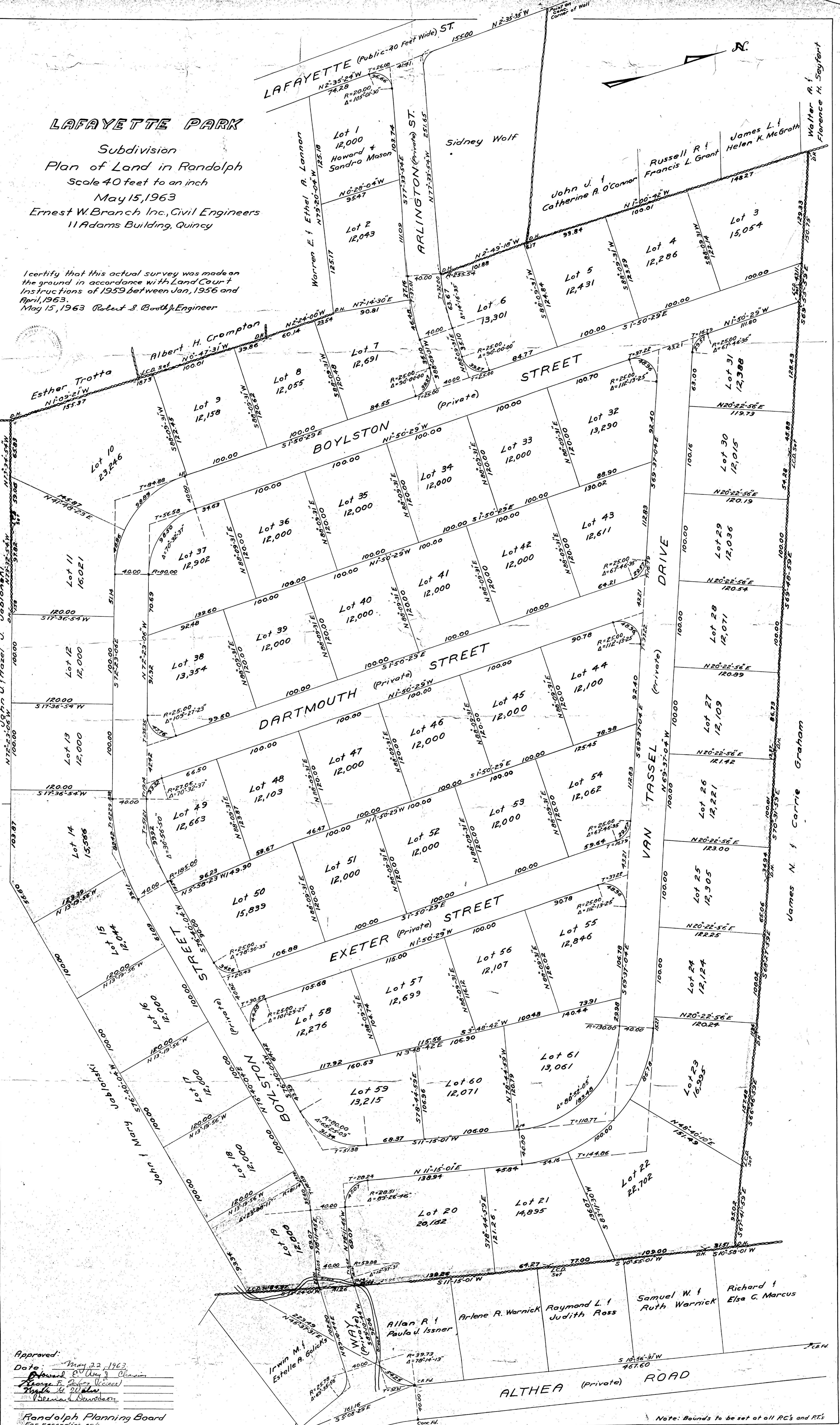


# LAFAYETTE PARK

Subdivision  
 Plan of Land in Randolph  
 Scale 40 feet to an inch  
 May 15, 1963  
 Ernest W. Branch Inc., Civil Engineers  
 11 Adams Building, Quincy

I certify that this actual survey was made on the ground in accordance with Land Court Instructions of 1959 between Jan, 1956 and April, 1963.  
 May 15, 1963 Robert S. Booth, Engineer



Approved: \_\_\_\_\_  
 Date: May 22, 1963  
 Ernest W. Branch, Chairman  
 George F. Ziegler, Vice-Chairman  
 Ralph H. D'Almeida  
 Bernard Sanderson

Randolph Planning Board  
 For recording only

Note: Bounds to be set at all PC's and PT's