

PERIMETER					
DIST	BEAR.	LAT.		DEP.	
		N.	S.	E.	W.
195.00	N. 88° 55' 40" W.	3.65	—	—	194.97
65.00	N. 89° 06' 00" W.	1.02	—	—	64.99
236.79	N. 04° 20' 31" E.	236.10	—	17.93	—
69.81	S. 79° 57' 36" E.	—	11.30	63.82	—
239.12	S. 79° 38' 30" E.	—	42.99	235.22	—
195.00	S. 17° 00' 00" W.	—	186.48	—	57.01
		240.77	240.77	316.97	316.97

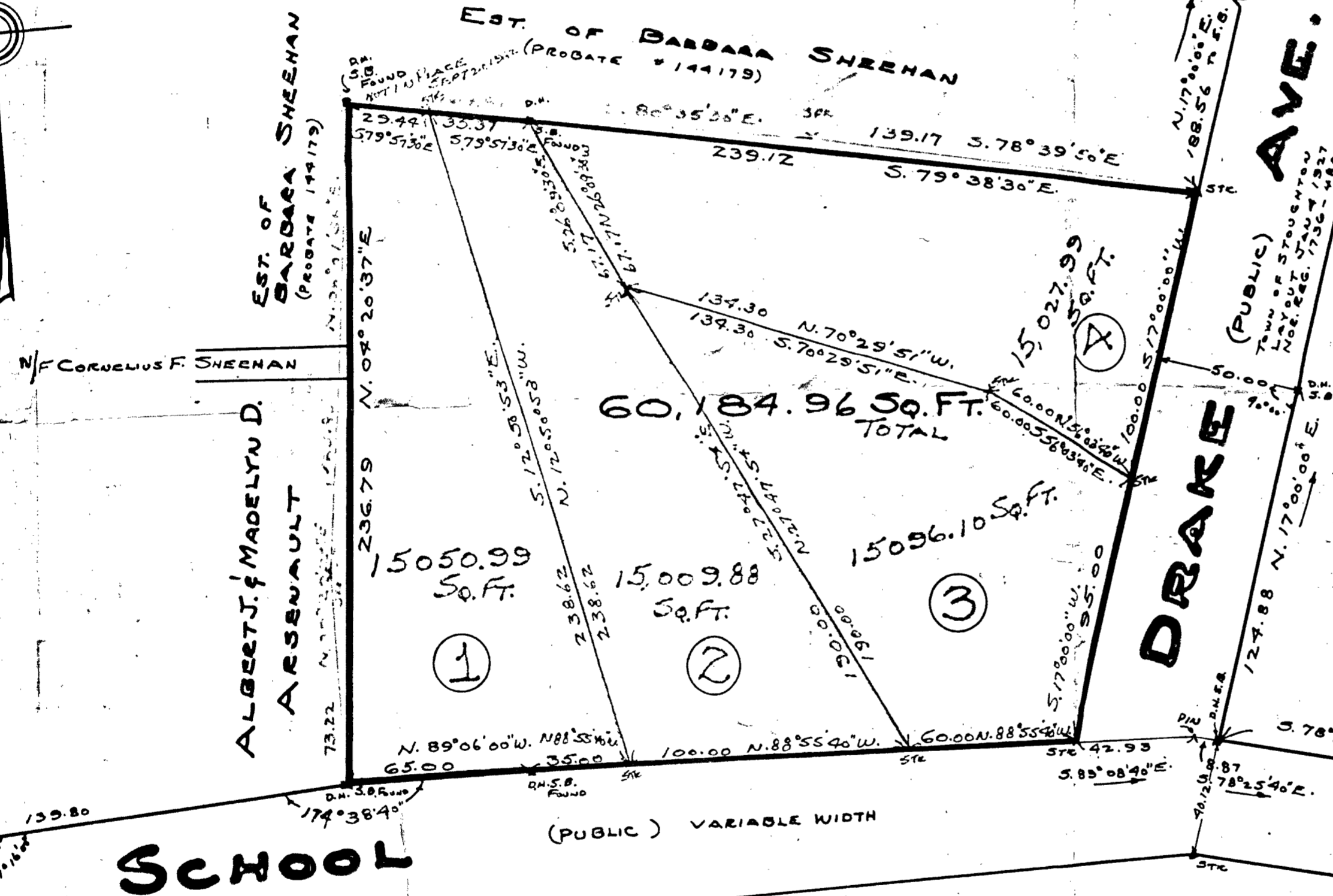
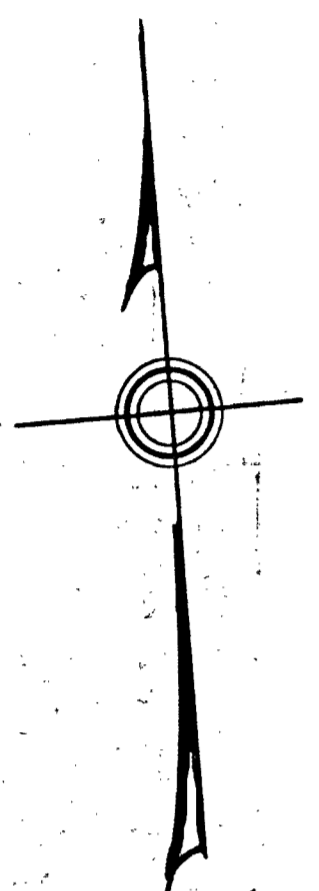
PLAN OF LAND IN STOUGHTON MASS BELONGING TO JOSEPHA. & ELIZABETH A. PIRES

SCALE 1" = 40' SEPT 6 1961.
EDWARD C. PETERSON REG. PROF. ENG. &
74 LINCOLN ST. STOUGHTON MASS. REG. LAND SURVEYOR.



I CERTIFY THAT THIS ACTUAL SURVEY WAS MADE ON THE GROUND IN ACCORDANCE WITH THE LAND COURT INSTRUCTIONS OF 1959 ON OR BETWEEN AUG 6 1960 AND AUG 20 1960.
DATE SEPT 6 1961 Edward C. Peterson
REGISTERED LAND SURVEYOR.

I CERTIFY THAT AN ADDITIONAL SURVEY WAS MADE ON SEPT 20 1962 TO DETERMINE THE LOT CORNERS AS SHOWN ON THIS PLAN.
DATE SEPT 20 1962 Edward C. Peterson
REGISTERED LAND SURVEYOR.



LOT 3						LOT 4					
DIST	BEAR.	LAT.		DEP.		DIST	BEAR.	LAT.		DEP.	
		N.	S.	E.	W.			N.	S.	E.	W.
95.00	S. 17° 00' 00" W.	—	20.85	—	27.78	239.12	S. 79° 38' 30" E.	—	42.99	235.22	—
60.00	N. 88° 55' 40" W.	1.12	—	—	59.99	100.00	S. 17° 00' 00" W.	—	95.63	—	29.24
130.00	N. 27° 17' 51" W.	168.07	—	—	88.60	60.00	N. 89° 06' 00" W.	—	38.50	—	49.78
134.30	S. 79° 57' 36" E.	—	44.84	126.60	—	134.30	N. 70° 29' 51" W.	—	44.83	—	126.59
60.00	S. 55° 23' 46" E.	—	33.50	49.77	—	67.17	N. 26° 09' 30" W.	60.23	—	—	29.61

NOTE: LOTS ① ② ③ ④ ADDED
SEPT. 20 1962 E.C.P.

I CERTIFY THAT THE PRESENT CONDITIONS ARE THE SAME AS THEY WERE ON SEPT 20 1962.
DATE - OCT 21 1963 Edward C. Peterson
REG. LAND SURVEYOR.

SHEEHAN ST. (PUBLIC)

LOT 1					
DIST	BEAR.	LAT.		DEP.	
		N.	S.	E.	W.
35.00	N. 88° 55' 40" W.	0.65	—	—	34.99
65.00	N. 89° 06' 00" W.	1.02	—	—	64.99
236.79	N. 04° 20' 31" E.	236.11	—	17.93	—
29.44	S. 79° 57' 36" E.	—	5.13	28.99	—
238.62	S. 12° 10' 03" E.	—	237.65	53.06	—

LOT 2					
DIST	BEAR.	LAT.		DEP.	
		N.	S.	E.	W.
100.00	N. 88° 55' 40" W.	1.87	—	—	99.98
238.62	N. 12° 10' 03" E.	232.65	—	—	53.06
35.37	S. 79° 57' 36" E.	—	6.17	34.83	—
67.17	S. 26° 09' 30" E.	—	60.23	29.61	—
190.00	S. 27° 17' 51" E.	—	168.06	88.60	—

APPROVED: _____

DATE _____ BOARD OF HEALTH
TOWN OF STOUGHTON MASS.

PLANNING BOARD APPROVAL UNDER
SUBDIVISION CONTROL LAW
NOT REQUIRED.
DATE Sept 7 1961 Prince P. Zannone Sec.
PLANNING BOARD
TOWN OF STOUGHTON MASS.

REAFFIRMED
DATE Sept 20 1962 Robert E. Dexter Sec.
PLANNING BOARD
TOWN OF STOUGHTON MASS.