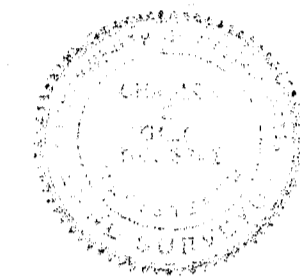
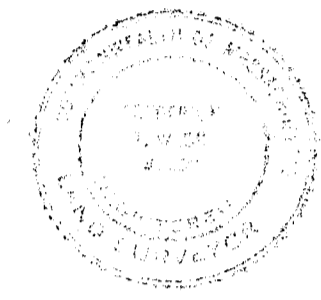


PLAN OF LAND IN RANDOLPH NORFOLK COUNTY MASS.

SCALE: 1" = 40'

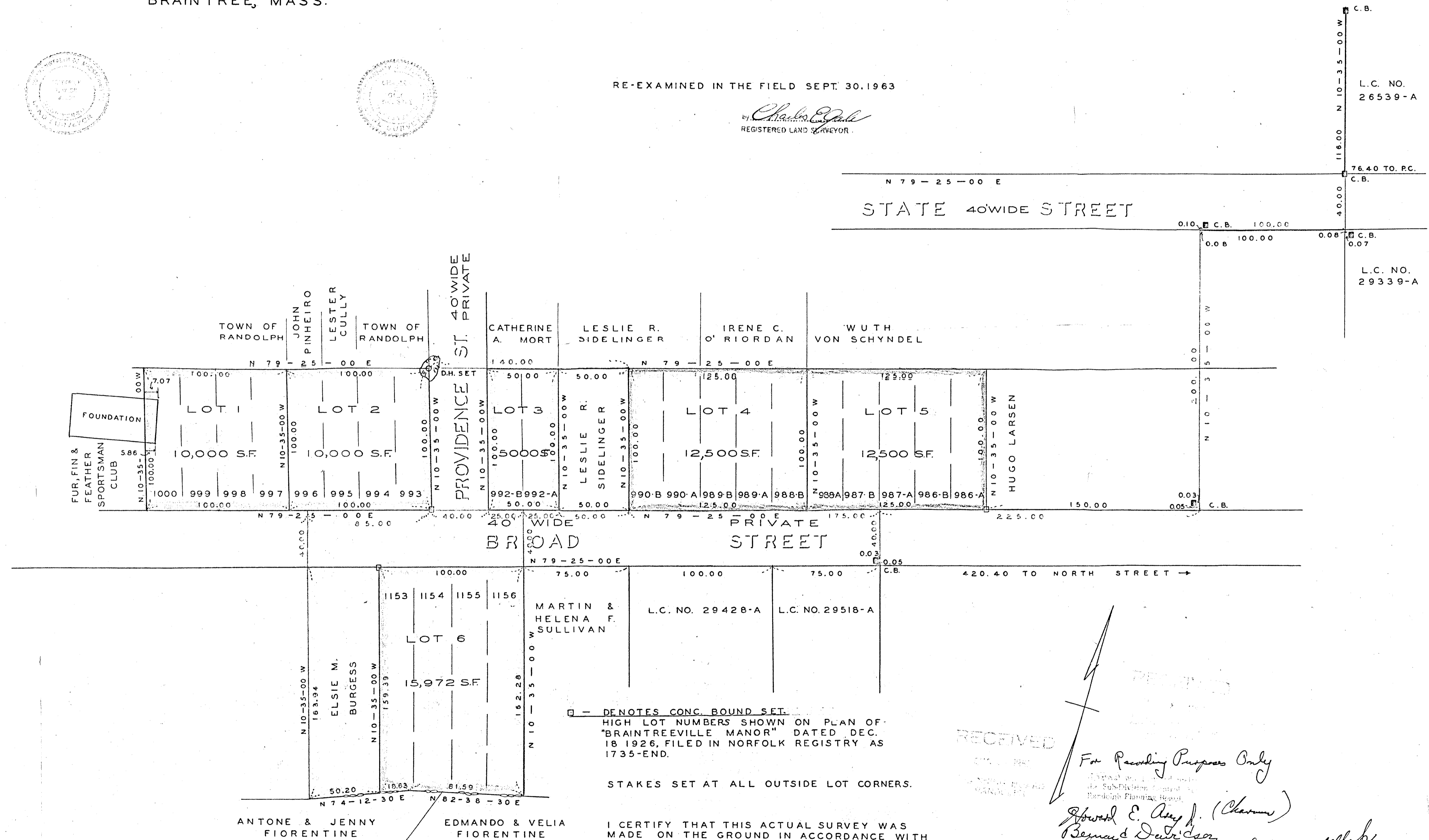
FEB. 27, 1962
REV. MAR. 5, 1962

THE SCHUYLER CLAPP CO.
BRAintree, MASS.



RE-EXAMINED IN THE FIELD SEPT. 30, 1963

Charles E. Felt
REGISTERED LAND SURVEYOR



C.B.
N 10-35-00 W
116.00
L.C. NO.
26539-A
76.40 TO P.C.
C.B.
40.00
0.10 C.B. 100.00
0.08 C.B. 0.07
L.C. NO.
29339-A

□ - DENOTES CONC. BOUND SET.
HIGH LOT NUMBERS SHOWN ON PLAN OF
"BRAINTREEVILLE MANOR" DATED DEC.
18 1926, FILED IN NORFOLK REGISTRY AS
1735-END.

STAKES SET AT ALL OUTSIDE LOT CORNERS.

I CERTIFY THAT THIS ACTUAL SURVEY WAS
MADE ON THE GROUND IN ACCORDANCE WITH
THE LAND COURT INSTRUCTIONS OF 1959.
ON FEB. 8 1962.

Charles E. Felt

RECEIVED

For Recording Purposes Only
Robert E. Amy Jr. (Chairman)
Bernard DeLuca
George F. [unclear]
James J. DeLuca *Sumner DeLuca*
Aug 27 1962