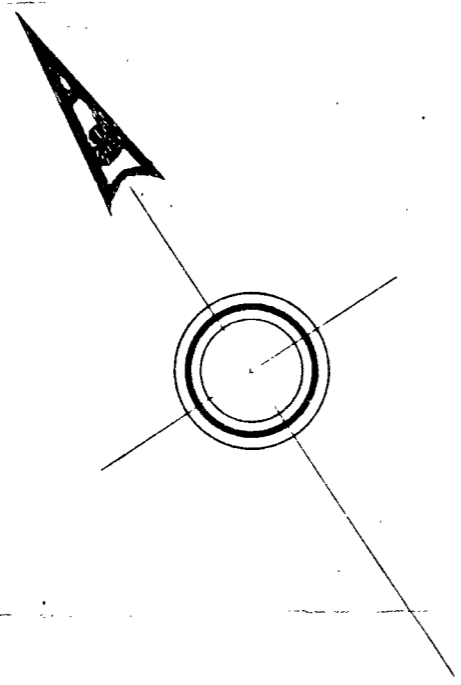


PLAN OF LAND IN WEYMOUTH-NORFOLK COUNTY-MASS.

SCALE: 1"=40' SEPT. 6, 1963

FRANK S. LAGROTTERIA ~ SURVEYOR
111 CENTRAL ST., SO. WEYMOUTH, MASS.

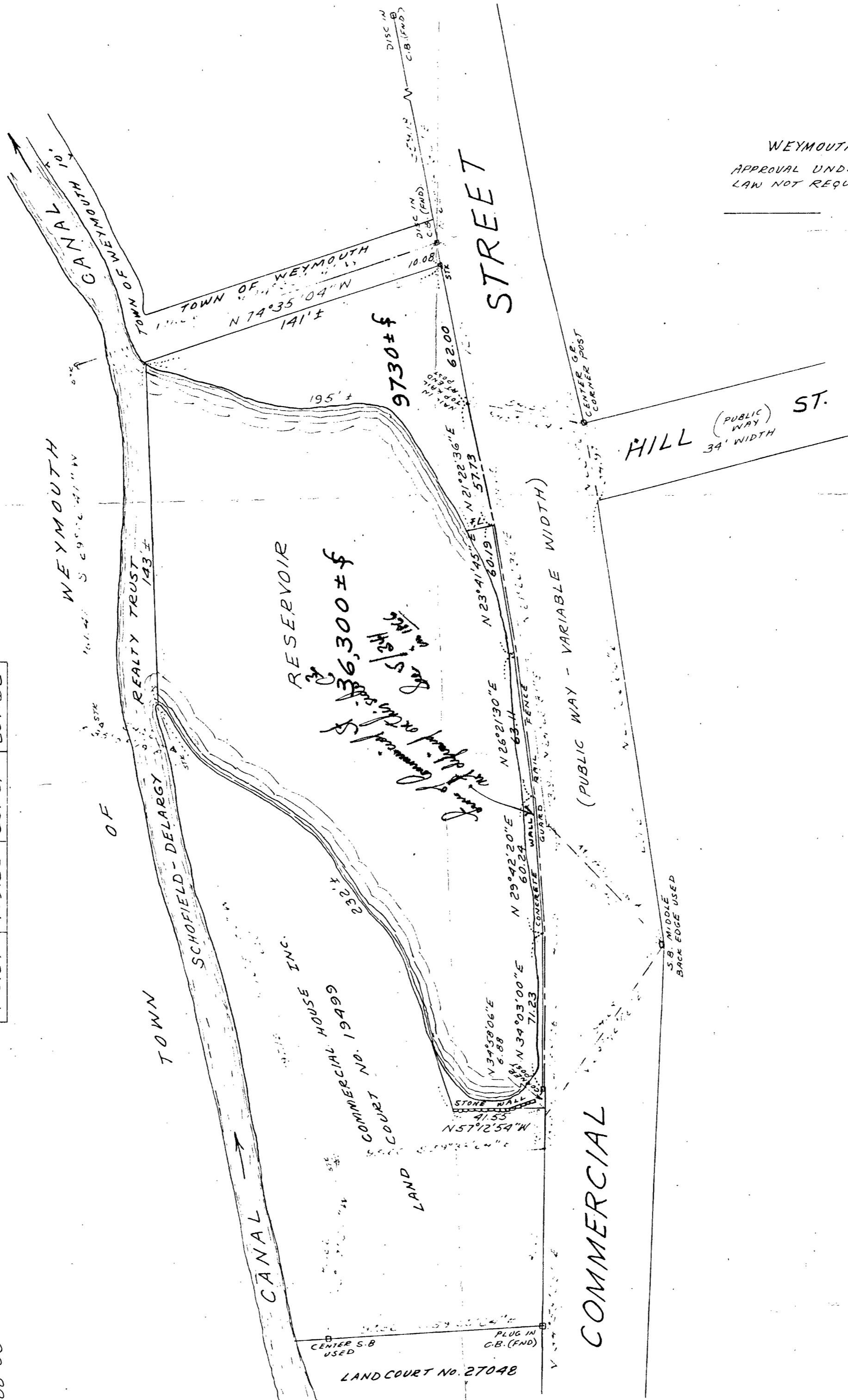


I CERTIFY THAT THIS ACTUAL SURVEY WAS MADE ON THE GROUND IN ACCORDANCE WITH THE LAND COURT INSTRUCTIONS OF 1959 BETWEEN JULY 6, 1963 & AUG. 31, 1963.

9/6/63 *Frank S. Lagrotteria*

WEYMOUTH PLANNING BOARD
APPROVAL UNDER SUBDIVISION CONTROL
LAW NOT REQUIRED.

INTERIOR ANGLE	BEARING	DISTANCE	N	S	E	W
94° 31' 30"	N 34° 58' 06" E	145.69	119.39	—	83.50	—
169° 30' 25"	N 29° 28' 31" E	73.96	67.31	—	30.64	—
176° 54' 05"	N 2° 22' 36" E	119.05	110.86	—	43.39	—
181° 12' 00"	N 22° 34' 36" E	72.08	66.56	—	27.67	—
82° 50' 20"	N 74° 35' 04" N	171.26	45.52	—	—	165.10
103° 37' 45"	S 29° 02' 41" W	161.41	—	141.11	—	78.36
114° 59' 00"	S 35° 58' 19" E	34.92	—	28.26	20.51	—
228° 54' 55"	S 12° 56' 36" W	197.15	—	192.14	—	44.16
107° 30' 00"	S 59° 33' 24" E	95.00	—	48.14	81.90	—
1260° 00' 00"		409.64	409.65	287.61	287.62	



LAND COURT NO. 2704B