

LOT LINES

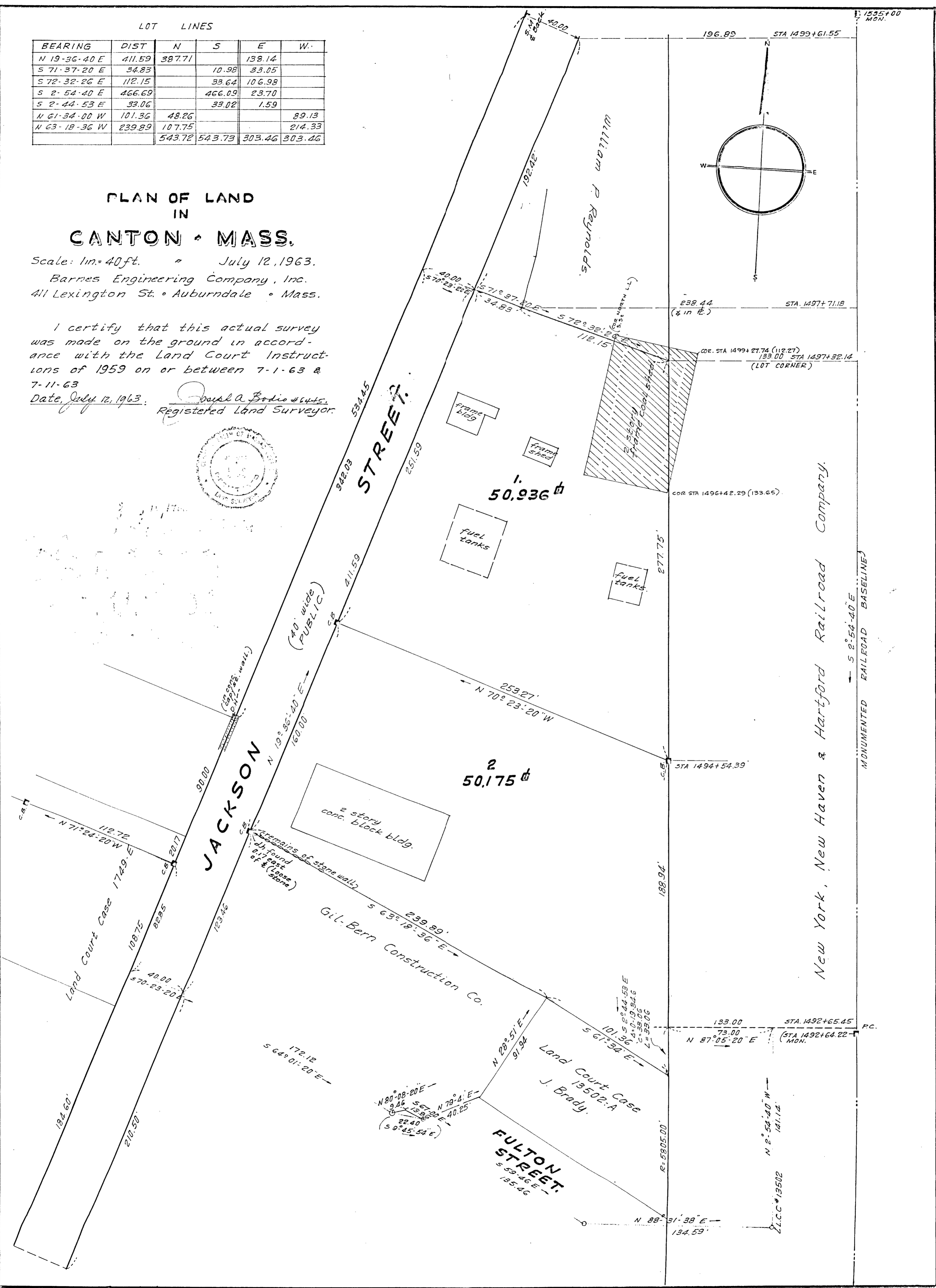
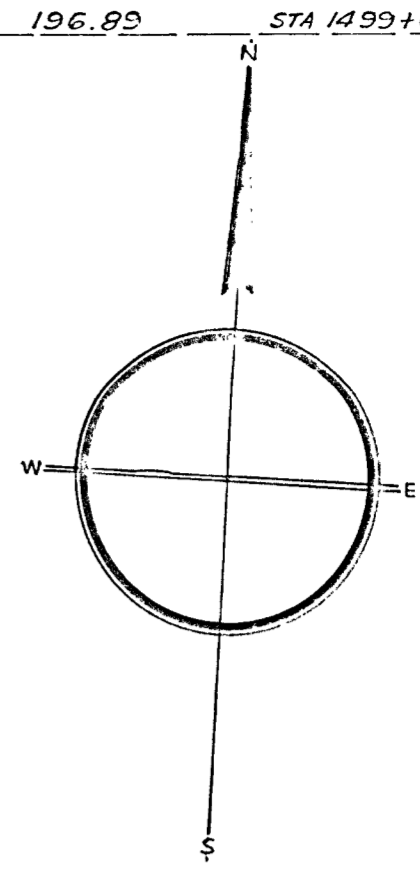
BEARING	DIST	N	S	E	W.
N 19° 36' 40" E	411.59	387.71		138.14	
S 71° 37' 20" E	34.83		10.98	33.05	
S 72° 32' 26" E	112.15		33.64	106.98	
S 2° 54' 40" E	466.69		466.09	23.70	
S 2° 44' 53" E	33.06		33.02	1.59	
N 61° 34' 00" W	101.36	48.26			89.13
N 63° 18' 36" W	239.89	107.75			214.33
		543.72	543.73	303.46	303.46

PLAN OF LAND
IN
CANTON, MASS.

Scale: 1 in. = 40 ft. July 12, 1963.
Barnes Engineering Company, Inc.
411 Lexington St. • Auburndale • Mass.

I certify that this actual survey was made on the ground in accordance with the Land Court Instructions of 1959 on or between 7-1-63 & 7-11-63

Date, July 12, 1963: Joseph A. Bodio #6445,
Registered Land Surveyor.



New York, New Haven & Hartford Railroad Company.

MONUMENTED RAILROAD BASELINE

1535+00 MON.