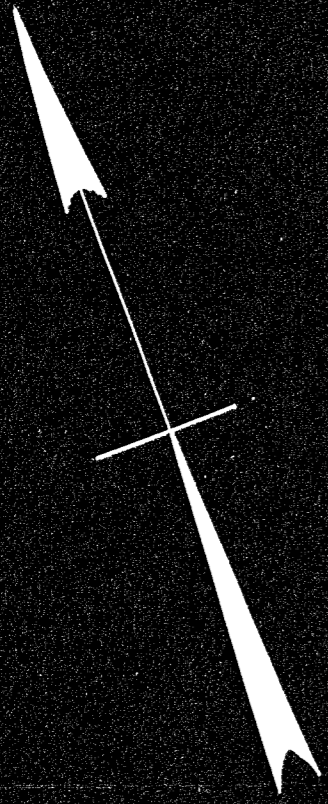


# PLAN OF LAND IN WEYMOUTH-NORFOLK COUNTY-MASS.

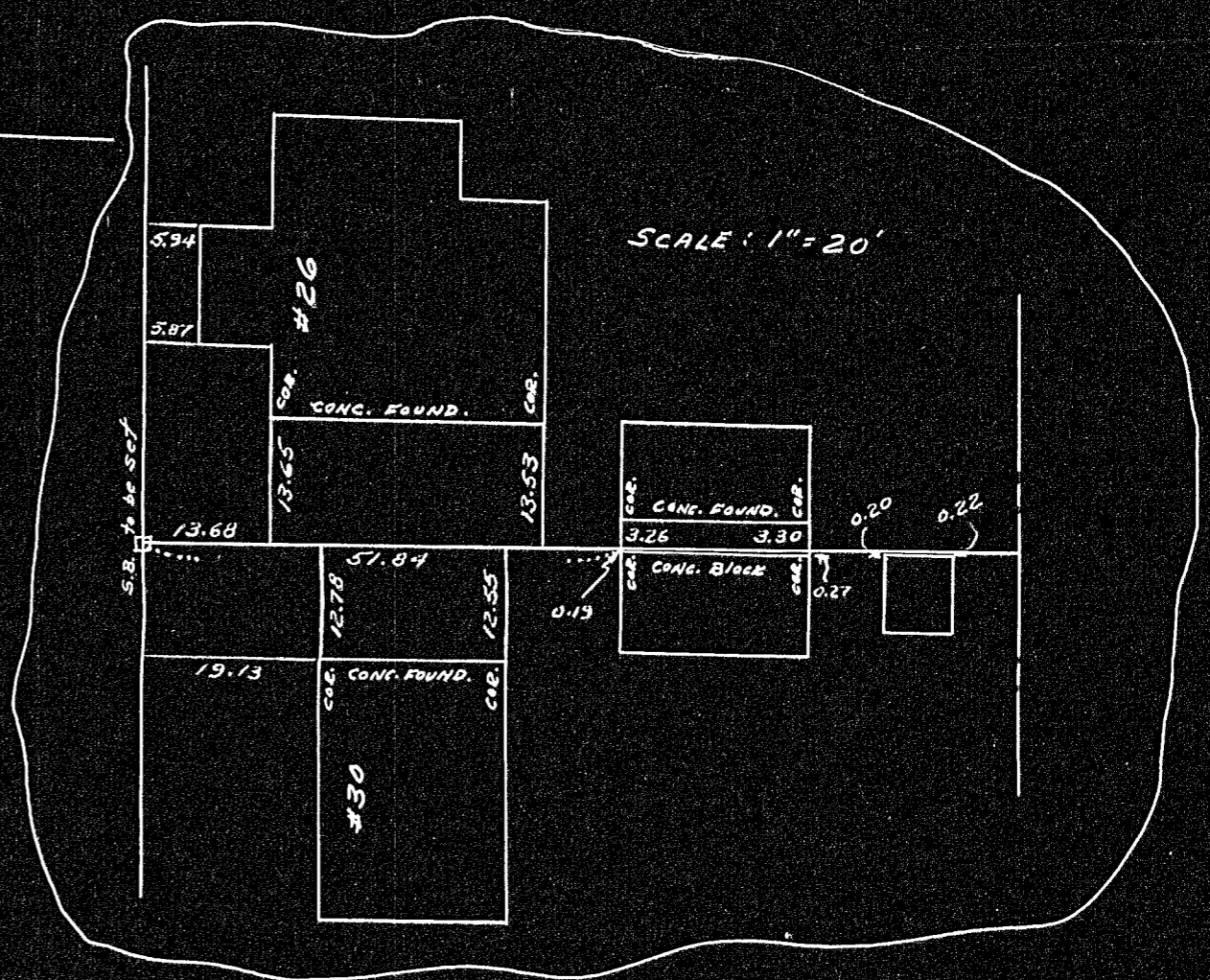
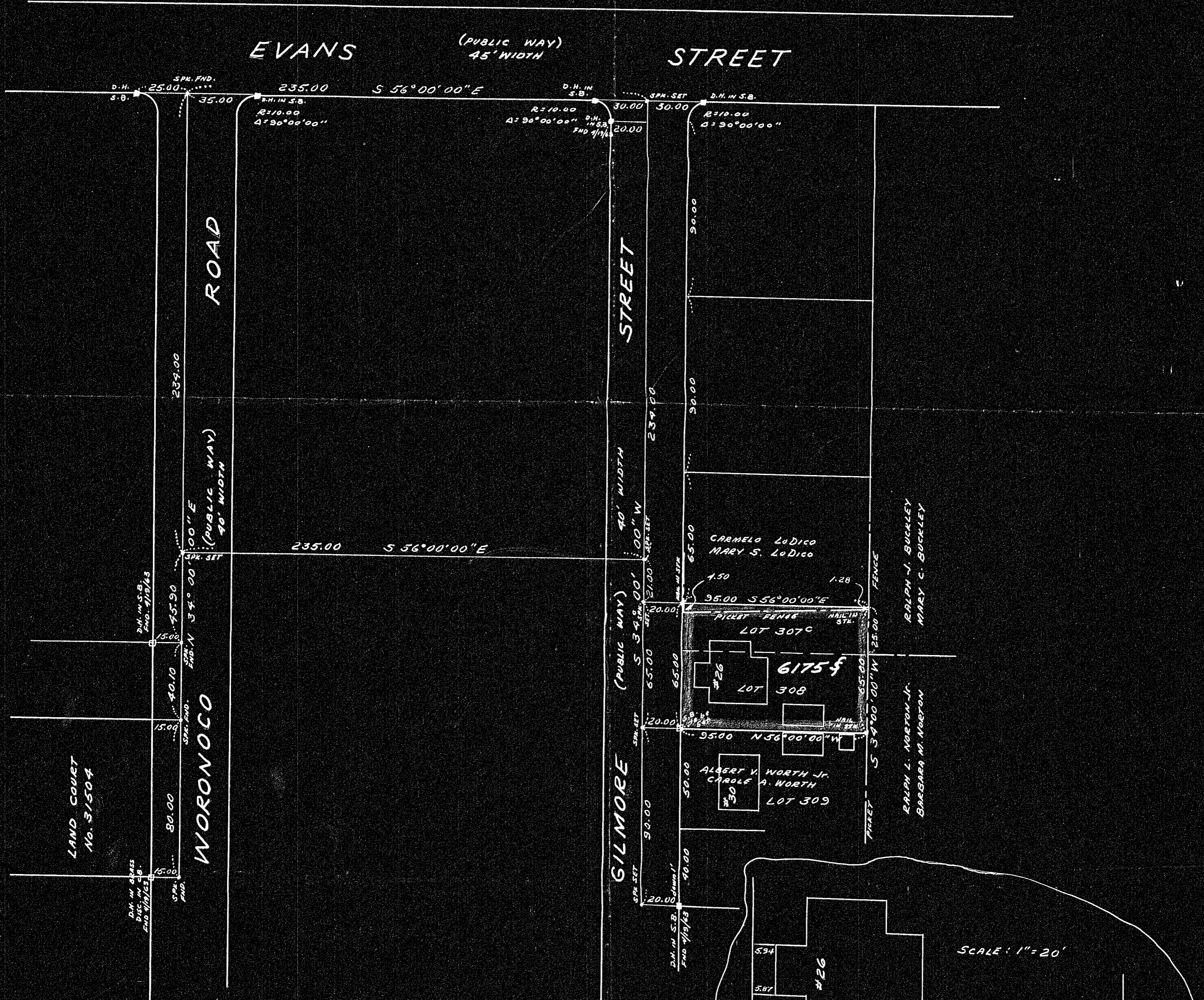
SCALE 1"=40' APRIL 20, 1963

FRANK S. LAGROTTERIA - SURVEYOR  
111 CENTRAL ST., SO. WEYMOUTH, MASS.



I certify that this actual survey was made on the ground in accordance with the Land Court Instructions of 1959 on April 19, 1963.

4/20/63 *Frank S. Lagrotteria*



LAND COURT  
No. 57504

WORONOCO  
(PUBLIC WAY)  
90' WIDTH

GILMORE  
(PUBLIC WAY)  
40' WIDTH

EVANS (PUBLIC WAY) 45' WIDTH STREET

CARMELO LoDICO  
MARY S. LoDICO

ALBERT V. WORTH JR.  
CAROL A. WORTH  
LOT 309

RALPH J. BUCKLEY  
MARY C. BUCKLEY

RALPH L. NORFOLK JR.  
BARBARA M. NORFOLK

WEYMOUTH PLANNING BOARD  
APPROVAL UNDER THE SUBDIVISION  
CONTROL LAW NOT REQUIRED  
DATE: 4/22/63 *William F. White, Sec.*

32379A  
MAY BE FILED  
5-28-63 R.C.C.  
Weymouth Pl. 10