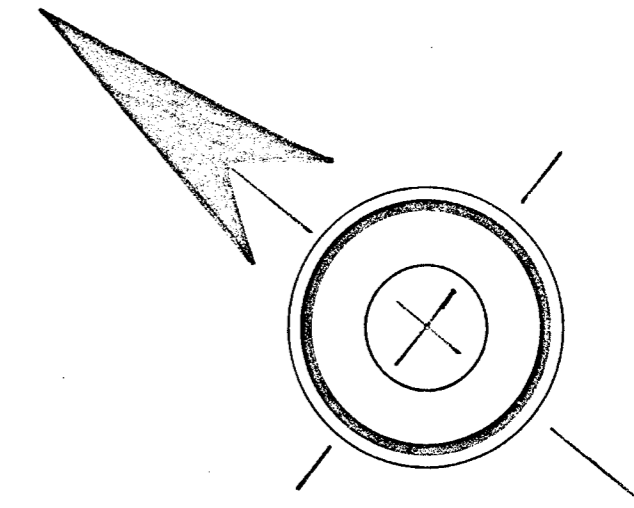


PLAN OF LAND IN  
**FOXBOROUGH**  
**NORFOLK COUNTY, MASS.**

I CERTIFY THAT THIS ACTUAL SURVEY WAS MADE  
 ON THE GROUND IN ACCORDANCE WITH THE LAND  
 COURT INSTRUCTIONS OF 1959, ON MAY 15, 1963.

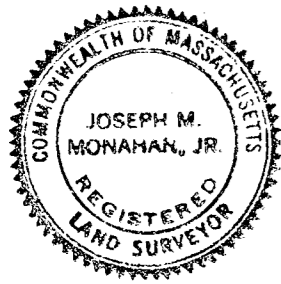
*Joseph M. Monahan, Jr.*  
 REGISTERED LAND SURVEYOR

CLASS "B" SURVEY 52 MOUNTAIN STREET  
 SHARON MASS



SCALE 1"=40' MAY 16, 1963

JOSEPH M. MONAHAN, JR.  
 SHARON, MASS.



OWNER  
**JOHN & AGNES GIRDIS**  
 BOOK 3412-365

ROY N. CARLSON  
 ET UX

WILBROD J. LEMIEUX

6

5

4

3

2

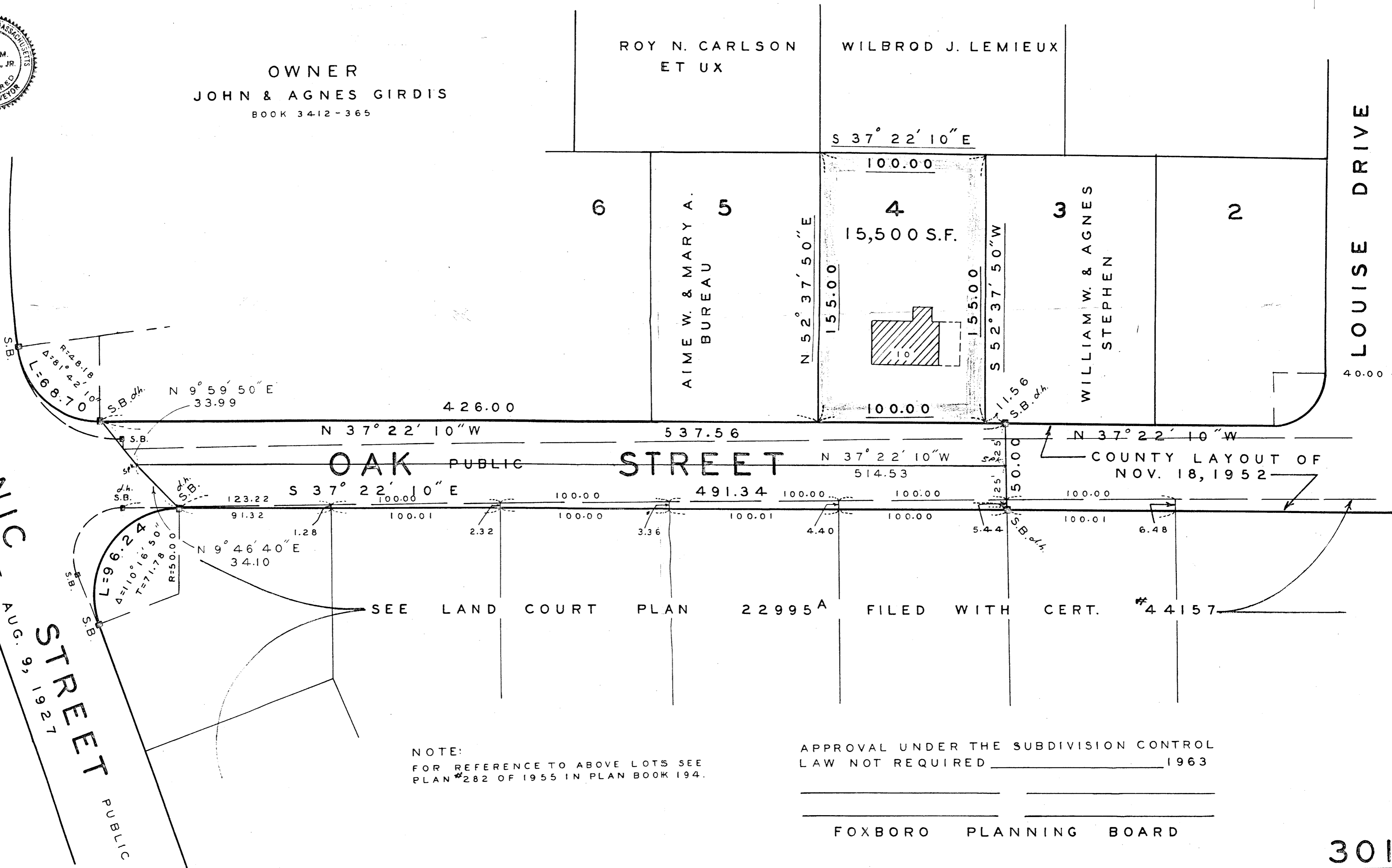
AIME W. & MARY A.  
 BUREAU

15,500 S.F.

WILLIAM W. & AGNES  
 STEPHEN

LOUISE DRIVE

MECHANIC STREET PUBLIC  
 COUNTY LAYOUT AUG. 9, 1927



SEE LAND COURT PLAN 22995<sup>A</sup> FILED WITH CERT. #44157

NOTE:  
 FOR REFERENCE TO ABOVE LOTS SEE  
 PLAN #282 OF 1955 IN PLAN BOOK 194.

APPROVAL UNDER THE SUBDIVISION CONTROL  
 LAW NOT REQUIRED 1963

FOXBORO PLANNING BOARD