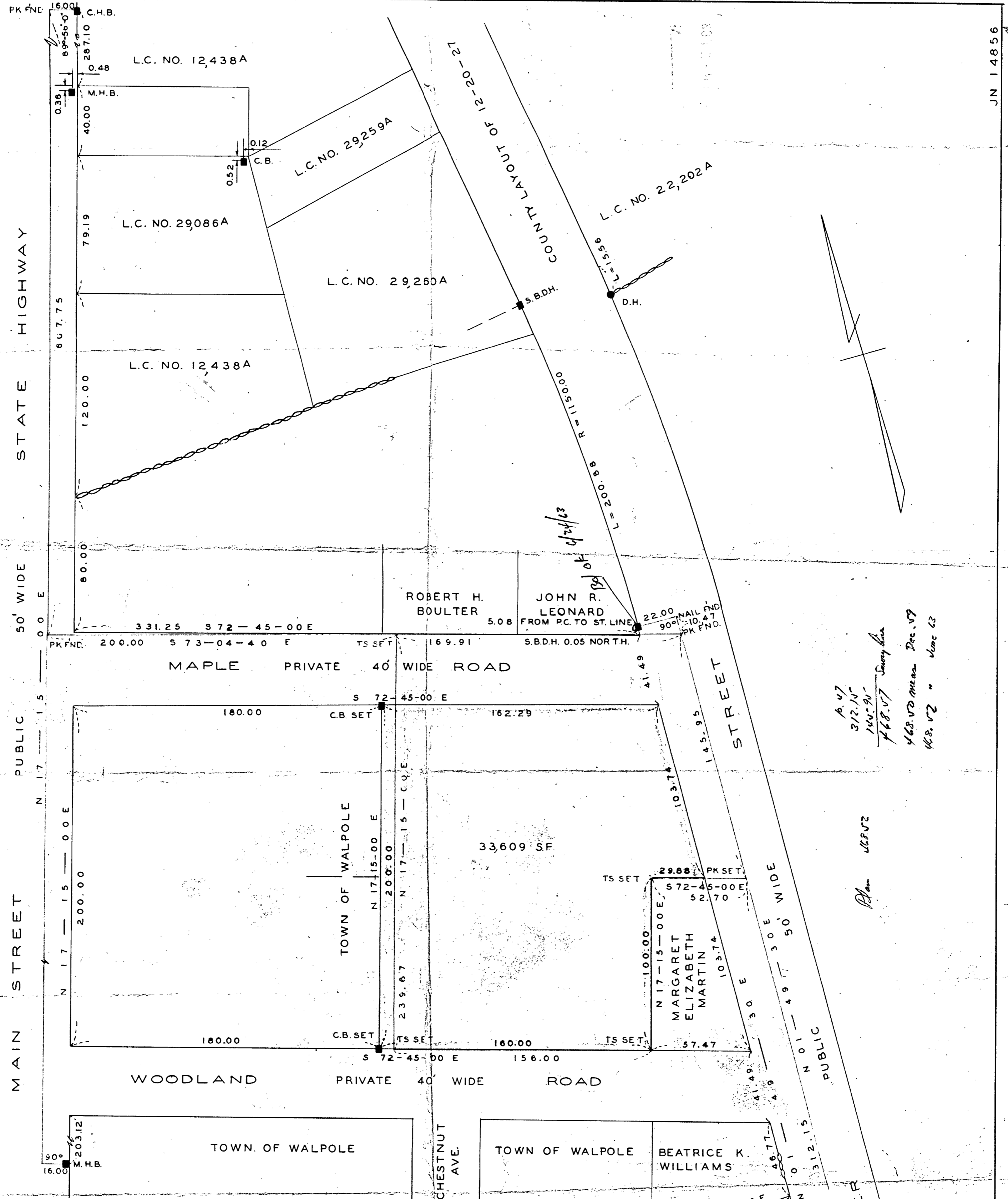


JN 14856
488.52 total area
488.52 County

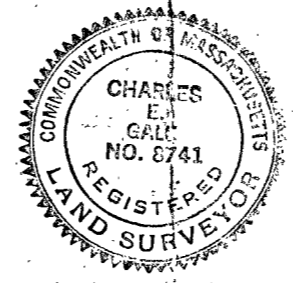
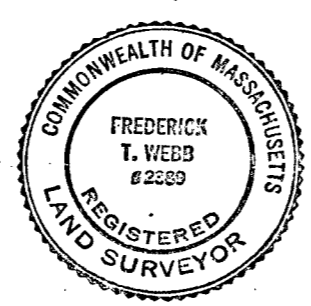


As of
3/12/67
160.90
468.52 mean Dec. 67
488.52 " June 63

Plan 48852

TOWN PLANNING BOARD
WALPOLE, MASS.
APPROVAL UNDER SUBDIVISION
CONTROL LAW NOT REQUIRED

PLAN OF LAND IN
WALPOLE, NORFOLK COUNTY, MASS.
SCALE: 1" = 40' FEB. 28, 1963
THE SCHUYLER CLAPP CO.
BRAintree, MASS.



I CERTIFY THAT THIS ACTUAL SURVEY WAS
MADE ON THE GROUND IN ACCORDANCE WITH
THE LAND COURT INSTRUCTIONS OF 1959
IN FEBRUARY, 1963.

Charles Galt