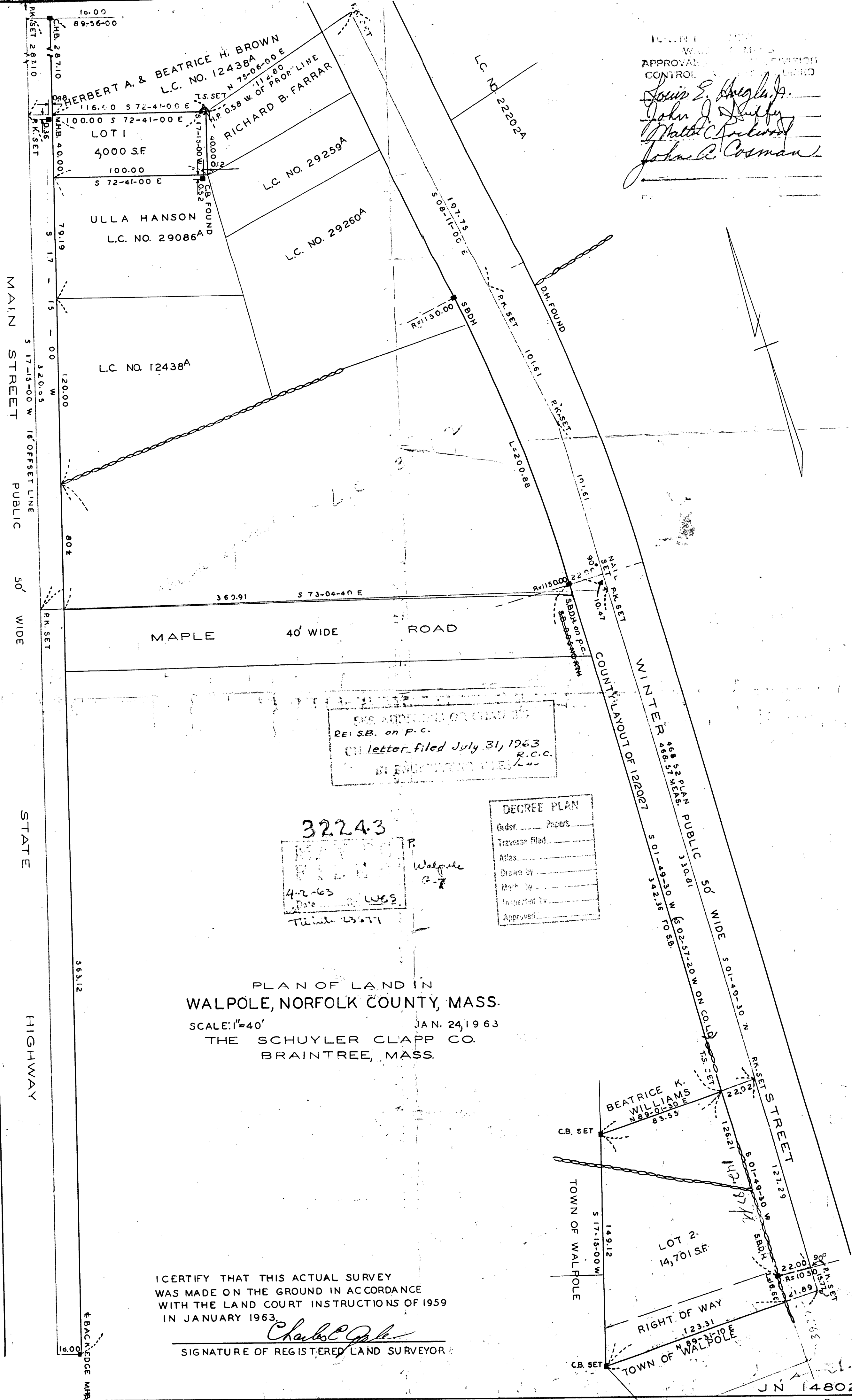


32243A

JN 14802



APPROVED FOR RECORDATION
 CONTROL

Joseph E. Maguire, Jr.
John J. Duffy
Walter C. Feltwell
John R. Cosman

SEE APPROVAL OF PLAN BY
 RE: SB. on P.C.
 ON letter filed July 31, 1963
 R.C.C.
 IN ENFORCEMENT FILE

32243

DATE 4-2-63
 WGS
 Tenth 23071

DECREE PLAN

Order _____ Papers _____
 Traverse filed _____
 Atlas _____
 Drawn by _____
 Made by _____
 Inspected by _____
 Approved _____

PLAN OF LAND IN
 WALPOLE, NORFOLK COUNTY, MASS.
 SCALE: 1"=40' JAN. 24, 1963
 THE SCHUYLER CLAPP CO.
 BRAintree, MASS.

I CERTIFY THAT THIS ACTUAL SURVEY
 WAS MADE ON THE GROUND IN ACCORDANCE
 WITH THE LAND COURT INSTRUCTIONS OF 1959
 IN JANUARY 1963.

Charles Clapp
 SIGNATURE OF REGISTERED LAND SURVEYOR

JN 14802

32243A