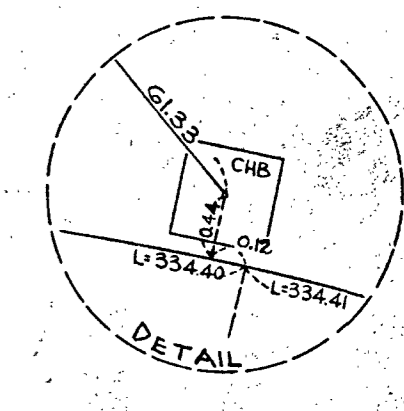
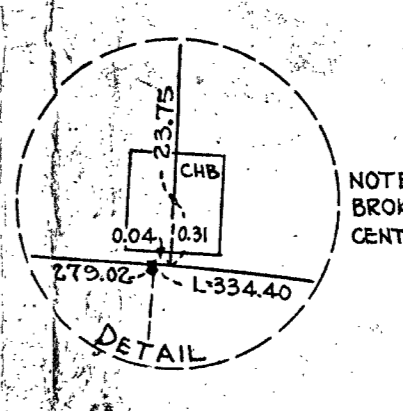
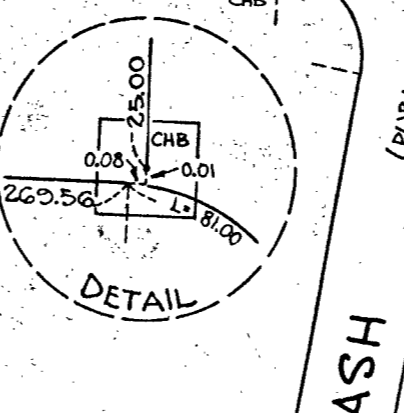
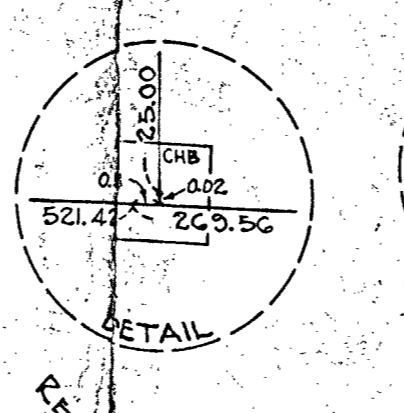
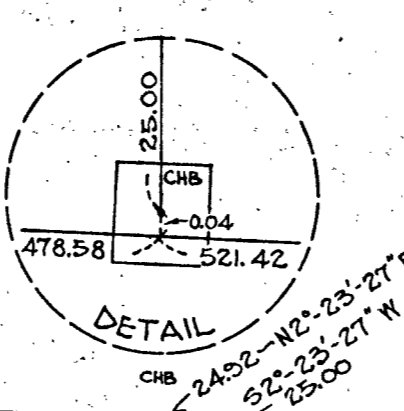
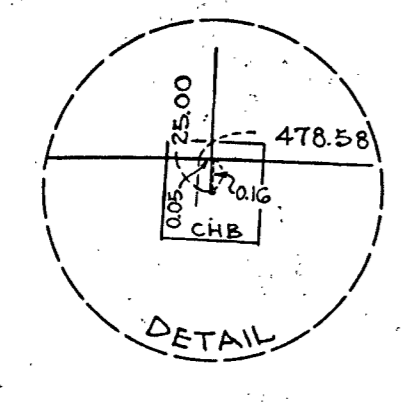
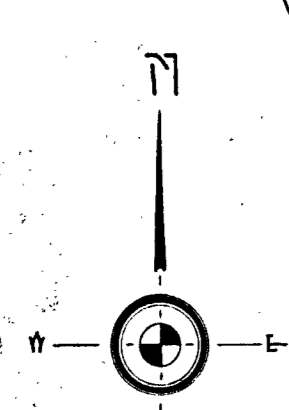
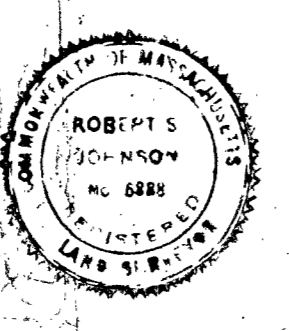


NOTE: TOP OF BOUNDARY BROKEN OFF, APPROXIMATE CENTER LOCATED.



I HEREBY CERTIFY THAT THIS ACTUAL SURVEY WAS MADE ON THE GROUND IN ACCORDANCE WITH THE LAND COURT INSTRUCTIONS OF 1959 BETWEEN NOV. 28, 1960 AND NOV. 19, 1962.  
 DATE: Nov. 19, 1962. *Robert J. Johnson*



TOWN OF WRENTHAM PLANNING BOARD:  
 APPROVAL, UNDER THE SUBDIVISION CONTROL LAW, NOT REQUIRED.  
 DATE: 19 Nov. 1962

*George J. Dwyer*  
*John Woodhouse*

PLAN OF LAND IN WRENTHAM, MASS.  
 SCALE: 1" = 100' Nov. 1962  
 MINTYRE & JOHNSON, INC., WYALPOLE, MASS.  
 REG. CIVIL ENGINEERS & REG. LAND SURVEYORS