



STREET

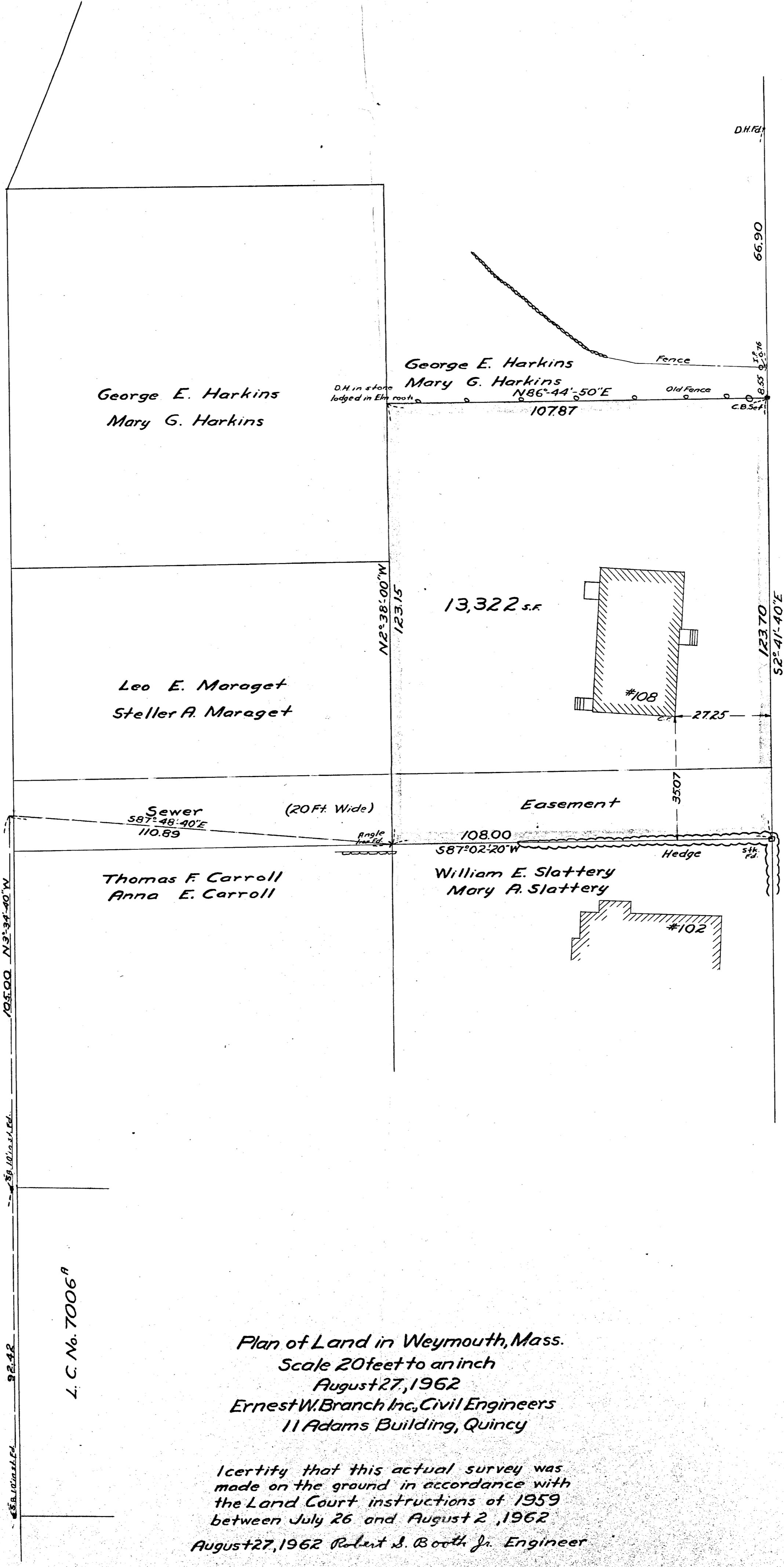
(Public ~ 30.00 Ft. Wide)

GRANITE

STREET

(Public ~ 33.00 Ft. Wide)

PHILLIPS



L. C. No. 20483^R

L. C. No. 7006^R

Plan of Land in Weymouth, Mass.
 Scale 20 feet to an inch
 August 27, 1962
 Ernest W. Branch Inc., Civil Engineers
 11 Adams Building, Quincy

I certify that this actual survey was
 made on the ground in accordance with
 the Land Court instructions of 1959
 between July 26 and August 2, 1962
 August 27, 1962 Robert S. Booth Jr. Engineer

