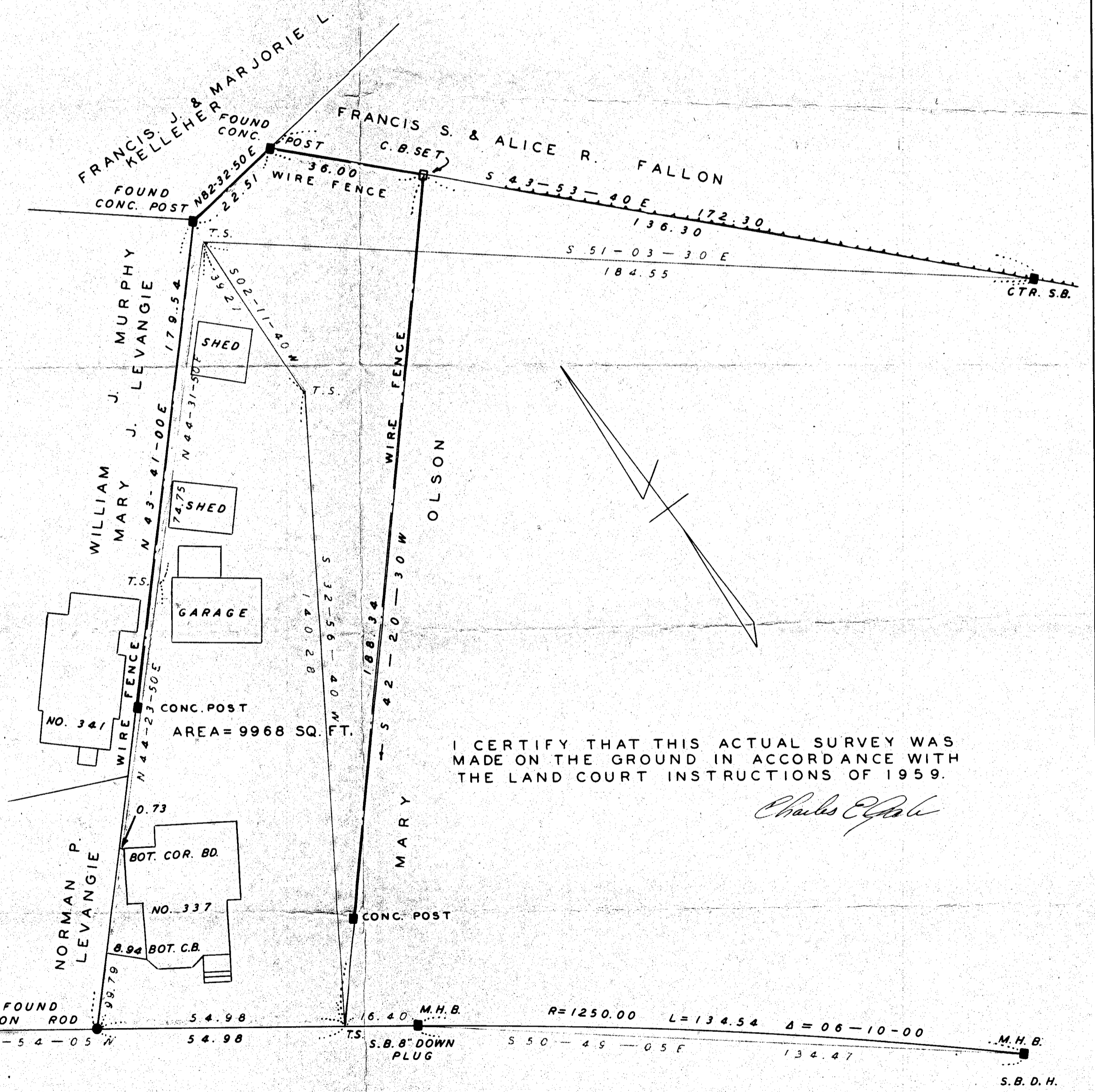
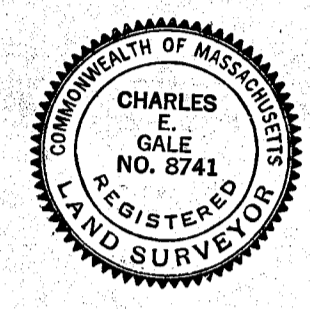
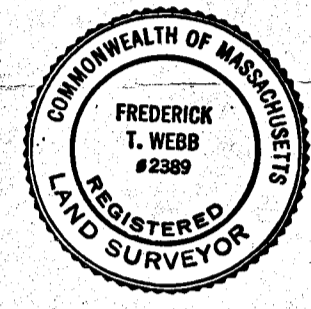


PLAN OF LAND IN BRAINTREE, NORFOLK CO., MASS.

SCALE: 1"=20'

OCT. 8, 1962

THE SCHUYLER CLAPP COMPANY
BRAINTREE, MASS.



I CERTIFY THAT THIS ACTUAL SURVEY WAS MADE ON THE GROUND IN ACCORDANCE WITH THE LAND COURT INSTRUCTIONS OF 1959.

Charles E. Gale

FRANKLIN ROUTE 37 STREET
ALTERED AND LAID OUT AS A STATE HIGHWAY DEC. 15 1925.
PUBLIC 50' WIDE