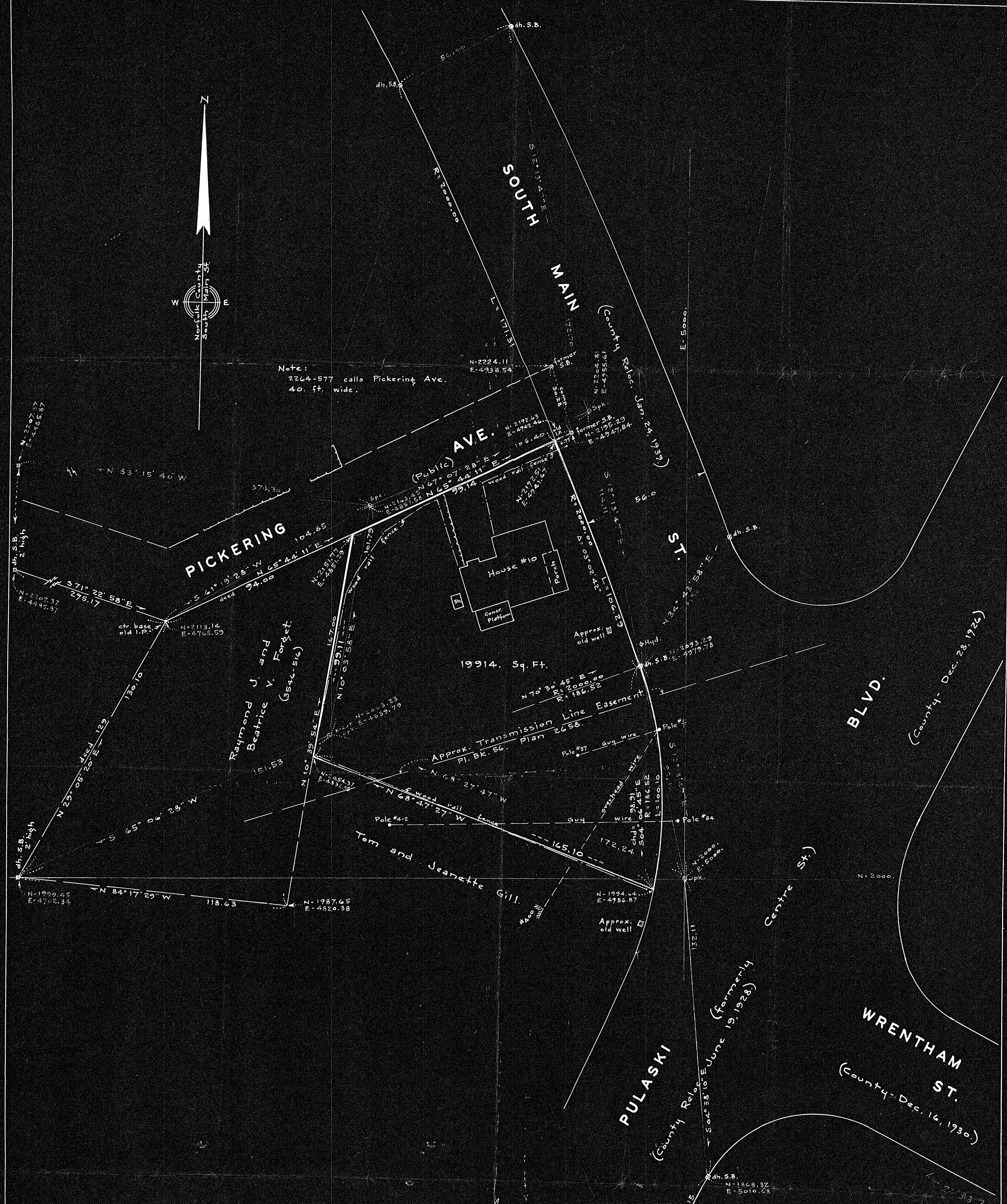


Note:
2264-577 calls Pickering Ave.
40. ft. wide.



19914. Sq. Ft.

32185A
MAY BE FILED
3-12-63
Date By JWC

Plan of Land in
BELLINGHAM, MASS.

Scale: 1 in. = 20 ft. Cheney Engineering Co.
Needham, Mass.
Feb. 21, 1963.



I certify that this actual survey was made on the ground in accordance with the Land Court instructions of 1959.
Frank L. Cheney
Civil Engineer

Approval Under The Subdivision Control Law NOT Required:
R. Bernard Brien
Ray M. DeRemo
Raymond J. DeRemo

Bellingham Planning Board
Date FEB. 21, 1963

Survey closure 1:26818

Transit Traverse.						
Bearing	Dist.	N	S	E	W	Spk.
N 12° 13' 47" W	209.57	204.81			44.39	Spk.
S 67° 07' 28" W	104.40		41.36		98.03	Spk.
S 10° 03' 58" W	101.79		100.22		17.79	X-cut RR:spk.
S 68° 27' 47" E	172.24		43.23	160.21		Spk.
		204.81	204.81	160.21	160.21	
Property Line Traverse.						
N 10° 39' 54" E	99.11	97.40		18.34	2054.37	4832.95
N 65° 44' 11" E	99.14	40.74		90.38	2192.51	4941.67
S 21° 00' 42" E	104.29		99.22	38.11	2093.29	4979.78 S.B.
S 04° 06' 45" E	98.91		98.65	7.09	1994.64	4986.87
N 68° 47' 27" W	165.10	59.73			153.92	2054.37 4832.95
		197.87	197.87	153.92	153.92	