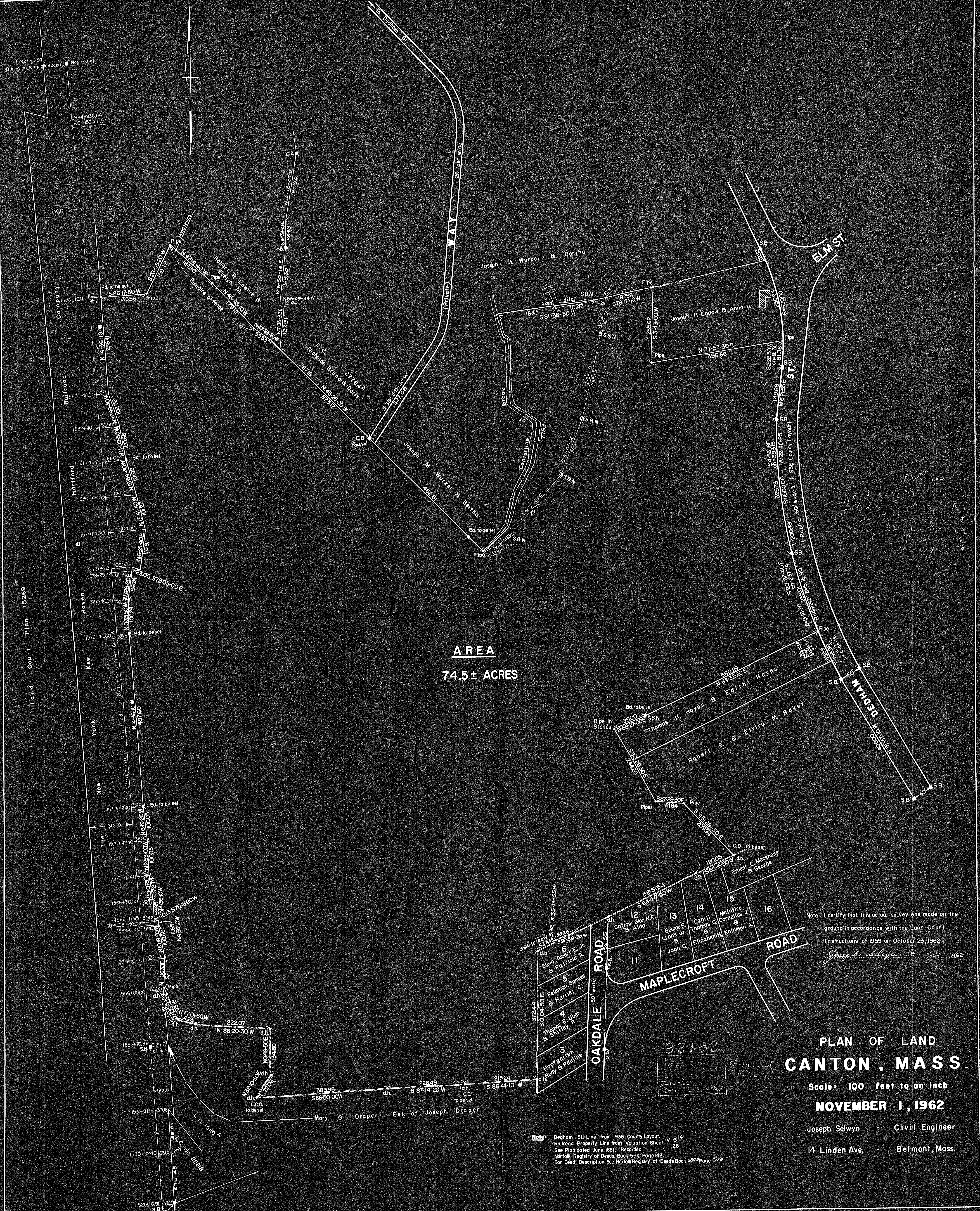


1532+99.34  
Bound on long produced. Not Found

R-45836.64  
P.C. 1591+11.97

Company  
Railroad  
Hartford  
Haven  
New  
York  
The

Land Court Plan 15269



AREA  
74.5± ACRES

Note: I certify that this actual survey was made on the ground in accordance with the Land Court Instructions of 1959 on October 23, 1962  
Joseph Selwyn, C.E., Nov. 1, 1962

# PLAN OF LAND CANTON, MASS.

Scale: 100 feet to an inch  
NOVEMBER 1, 1962

Joseph Selwyn - Civil Engineer  
14 Linden Ave. - Belmont, Mass.

Note: Dedham St. Line from 1936 County Layout. Railroad Property Line from Valuation Sheet V. 314 26  
See Plan dated June 1881, Recorded Norfolk Registry of Deeds, Book 534 Page 142.  
For Deed Description See Norfolk Registry of Deeds Book 3972 Page 409

32183  
MASS. REGISTRY OF DEEDS  
2-11-62  
Date: 11-1-62