

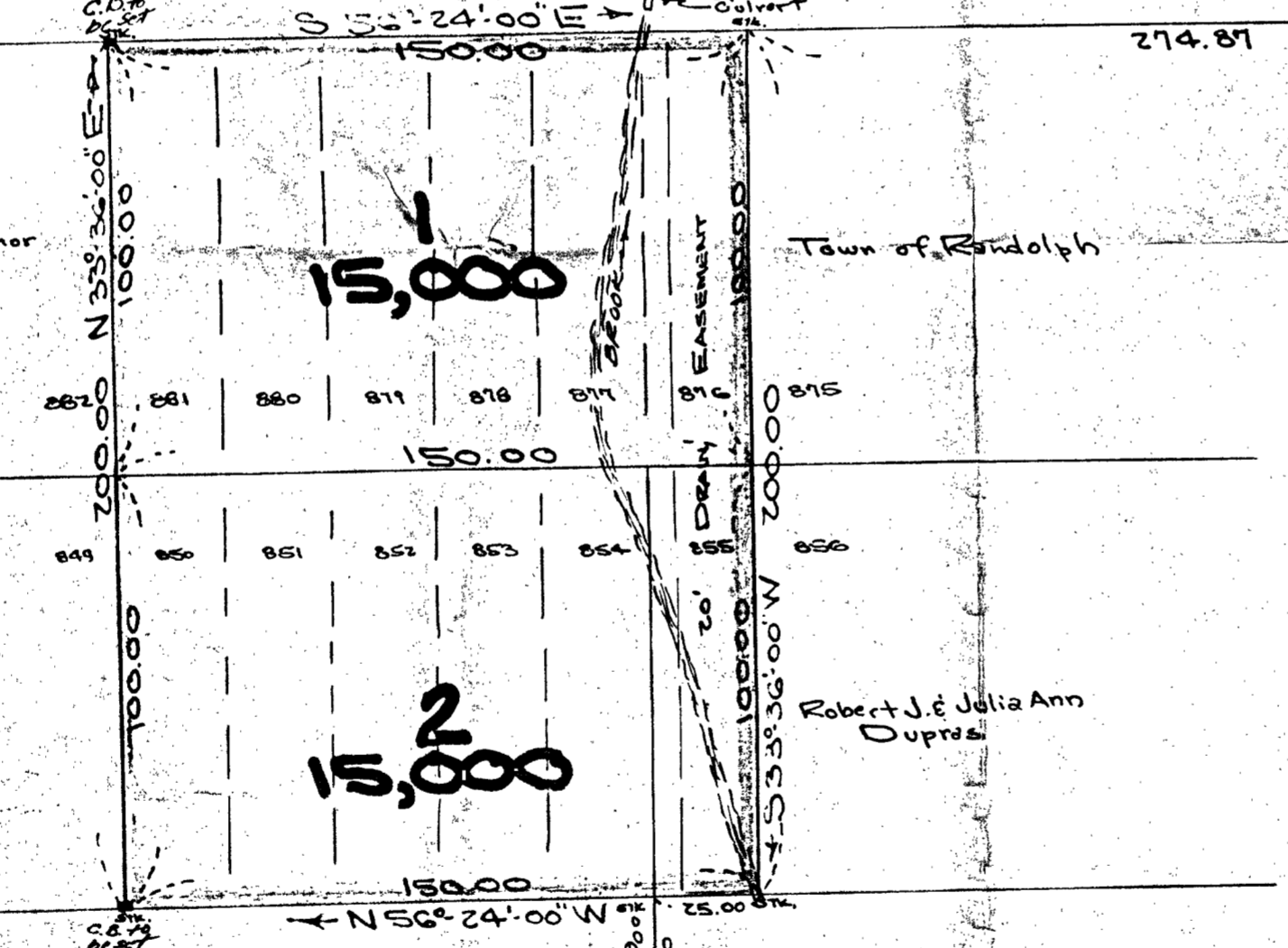
PLAN OF LAND
RANDOLPH-MASS.
 SCALE 1"=40' JAN. 29, 1963
 L.W. DE CELLE SURVEYORS INC.

LAND SURVEYORS
 285 UNION ST. RANDOLPH
 PROPERTY OWNER
 Town of Randolph
 Randolph, Mass.

NOT RECORDED FOR REVISION
 MON. FEB. 11, 1963
 11:30 AM

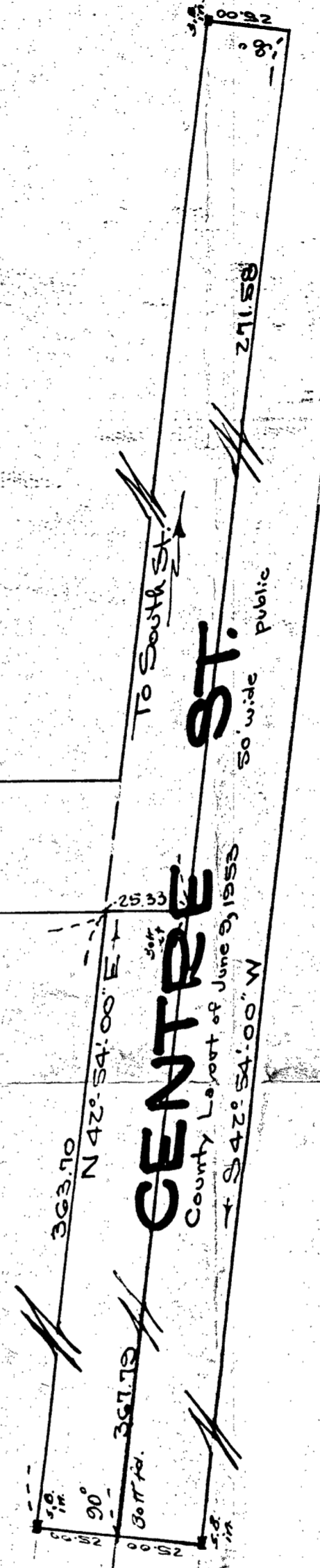
Town of Randolph Town of Randolph Benjamin & Marjorie Ellis

EMERTON AVE. 40' wide private stone wall



PATTERSON AVE. 40' wide private

Albert & Sadie Wotmough
 John A. & Beulah M. McCarthy T.B.E.
 L.C. 29571 A
 Wilbert & Evelyn L. Adams



I certify that this actual survey was made on the ground in accordance with the Land Court Instructions of 1959 on Feb. 1, 1963
 Robert A. Ralibelle Feb. 4, 1963

Planning Board approval not required under the Subdivision Control Law.
 George F. Hoey (CLERK)

Date: