

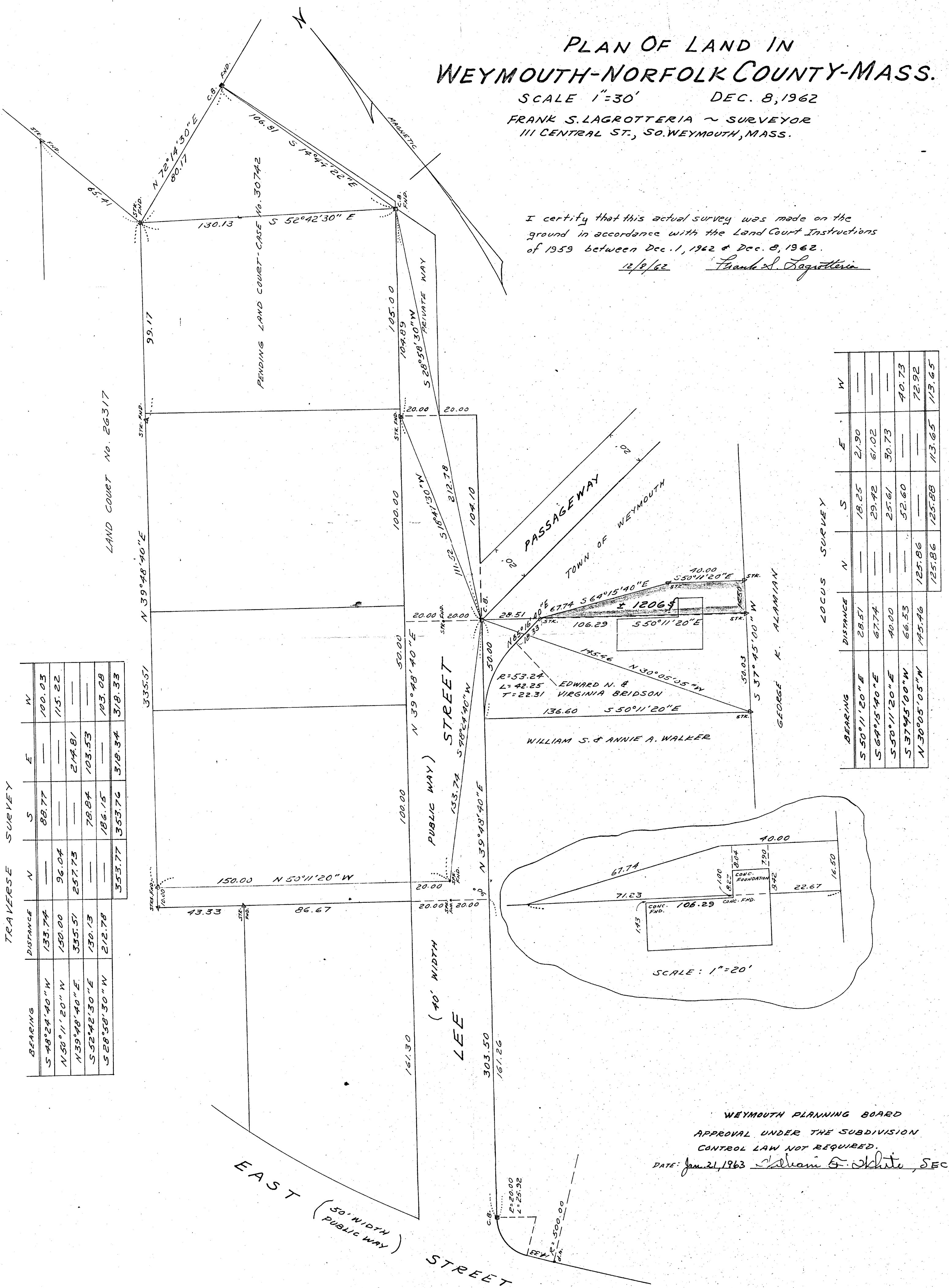
PLAN OF LAND IN WEYMOUTH-NORFOLK COUNTY-MASS.

SCALE 1"=30' DEC. 8, 1962

FRANK S. LAGROTTERIA ~ SURVEYOR
111 CENTRAL ST., SO. WEYMOUTH, MASS.

I certify that this actual survey was made on the
ground in accordance with the Land Court Instructions
of 1959 between Dec. 1, 1962 & Dec. 8, 1962.

12/8/62 Frank S. Lagrotteria



TRAVERSE SURVEY

BEARING	DISTANCE	N	S	E	W
S 48°24'40" W	133.74	—	88.77	—	100.05
N 50°11'20" W	150.00	96.04	—	—	115.22
N 39°48'40" E	335.51	257.75	—	214.81	—
S 52°42'30" E	130.13	—	78.84	103.53	—
S 28°58'30" W	212.78	—	186.15	—	103.08
		335.77	353.76	318.34	318.33

LOCUS SURVEY

BEARING	DISTANCE	N	S	E	W
S 50°11'20" E	28.51	—	18.25	21.90	—
S 64°15'40" E	67.74	—	29.42	61.02	—
S 50°11'20" E	40.00	—	25.61	30.73	—
S 37°45'00" W	66.33	—	52.60	—	40.73
N 30°05'05" W	145.46	125.86	—	—	72.92
		125.86	125.88	113.65	113.65

SCALE: 1"=20'

WEYMOUTH PLANNING BOARD
APPROVAL UNDER THE SUBDIVISION
CONTROL LAW NOT REQUIRED.

DATE: Jan. 21, 1963 *Sharon F. White, SEC.*