

DETAIL NOT TO SCALE

SCALE: 1"=40'

AREA IN FOXBOROUGH : 76.7 ACRES  
AREA IN MANSFIELD : 1.5 ACRES  
TOTAL AREA : 78.2 ACRES

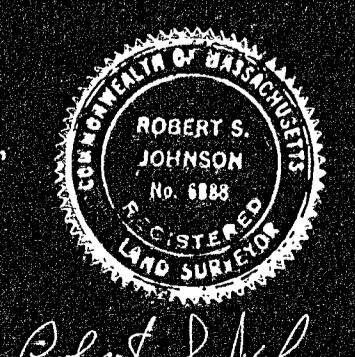
TOWN OF FOXBOROUGH	TOWN OF MANSFIELD
APPROVAL, UNDER THE SUBDIVISION CONTROL LAW, NOT REQUIRED	
<i>John P. Sienesch</i> Town Engineer	<i>James M. Brown</i> Town Engineer
DATE: Feb. 7, 1963	DATE: Feb. 11, 1963

32127  
MAY 1963  
FIELD  
Nadale  
K. 44  
(100)

DECREE PLAN  
Order: Papers  
Traverse: Filed  
Atlas:  
Drawn by:  
Math: by  
Inspected by:  
Approved:

I CERTIFY THAT THIS ACTUAL SURVEY WAS MADE ON THE GROUND IN ACCORDANCE WITH THE LAND COURT INSTRUCTIONS OF 1959 ESTABLISHED JUNE 30, 1961 AND JUNE 15, 1962.  
DATE: July 6, 1962

I further certify that conditions on the ground today are the same as in 1962.  
DATE: Feb. 7, 1963



*Robert S. Johnson*

TOWN OF FOXBOROUGH  
APPROVAL, UNDER THE SUBDIVISION CONTROL LAW, NOT REQUIRED.  
DATE: July 5, 1962

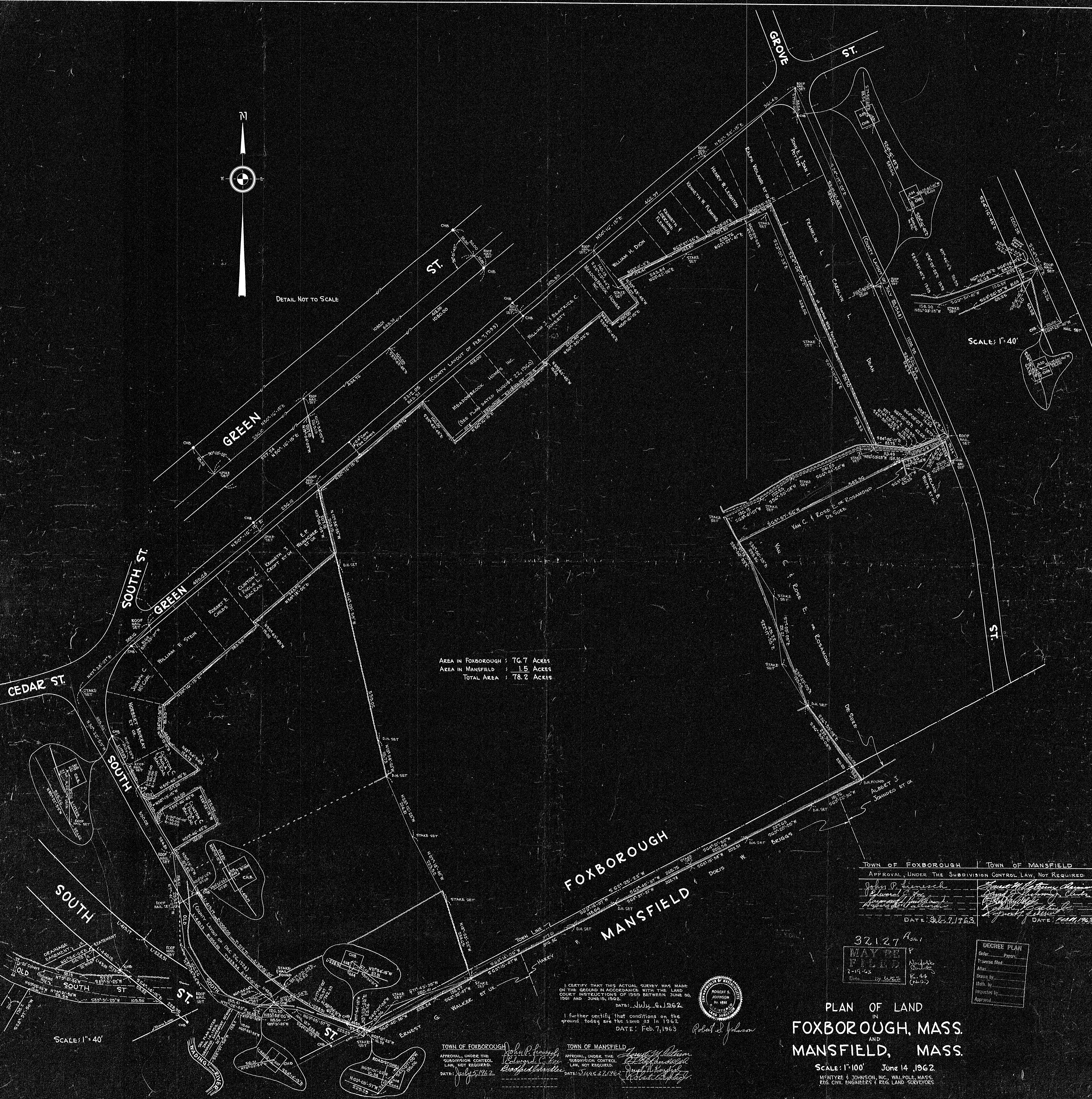
*John P. Sienesch*  
*Richard C. Carter*  
*Richard S. Carter*

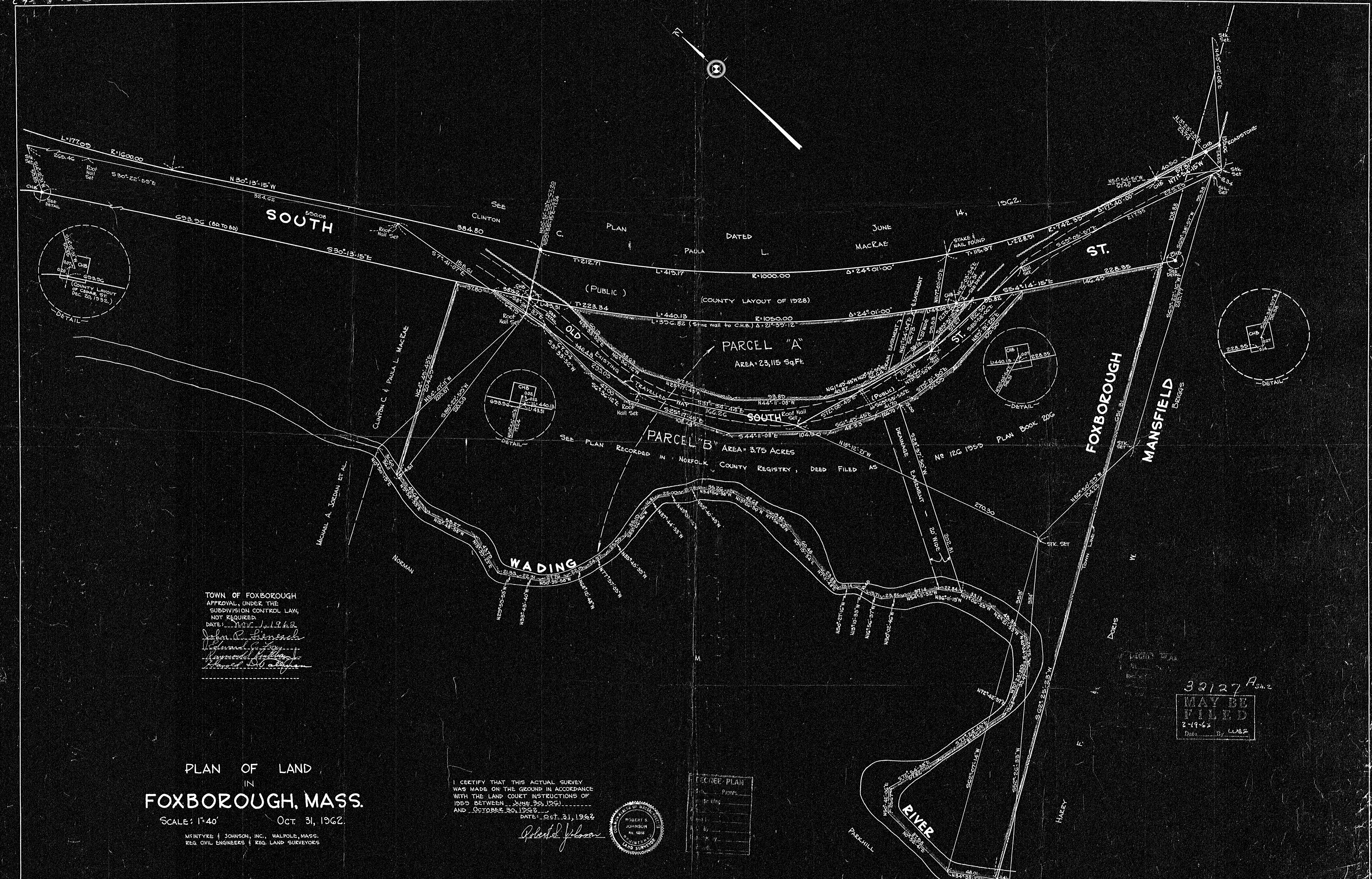
TOWN OF MANSFIELD  
APPROVAL, UNDER THE SUBDIVISION CONTROL LAW, NOT REQUIRED.  
DATE: June 27, 1962

*James M. Brown*  
*Robert S. Johnson*  
*Robert S. Johnson*

PLAN OF LAND  
IN  
FOXBOROUGH, MASS.  
AND  
MANSFIELD, MASS.

SCALE: 1"=100' June 14, 1962.  
MONTYRE & JOHNSON, INC., WALPOLE, MASS.  
REG. CIVIL ENGINEERS & REG. LAND SURVEYORS





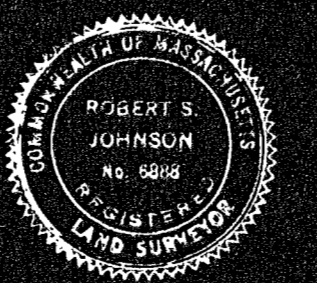
TOWN OF FOXBOROUGH  
 APPROVAL, UNDER THE  
 SUBDIVISION CONTROL LAW,  
 NOT REQUIRED.  
 DATE: *Nov. 1, 1962*  
*John P. Lynch*  
*Raymond C. Gentry*  
*Raymond B. Sullivan*  
*Edward D. Alban*

PLAN OF LAND  
 IN  
**FOXBOROUGH, MASS.**  
 SCALE: 1"=40'      Oct. 31, 1962.

MENTYRE & JOHNSON, INC., WALPOLE, MASS.  
 REG. CIVIL ENGINEERS & REG. LAND SURVEYORS

I CERTIFY THAT THIS ACTUAL SURVEY  
 WAS MADE ON THE GROUND IN ACCORDANCE  
 WITH THE LAND COURT INSTRUCTIONS OF  
 1959 BETWEEN JUNE 29, 1961  
 AND OCTOBER 30, 1962  
 DATE: *Oct. 31, 1962*

*Robert S. Johnson*



RECORD PLAN	
Books	Pages

32127A-542  
**MAY BE  
 FILED**  
 2-19-63  
 Date: \_\_\_\_\_ By: *LLB*