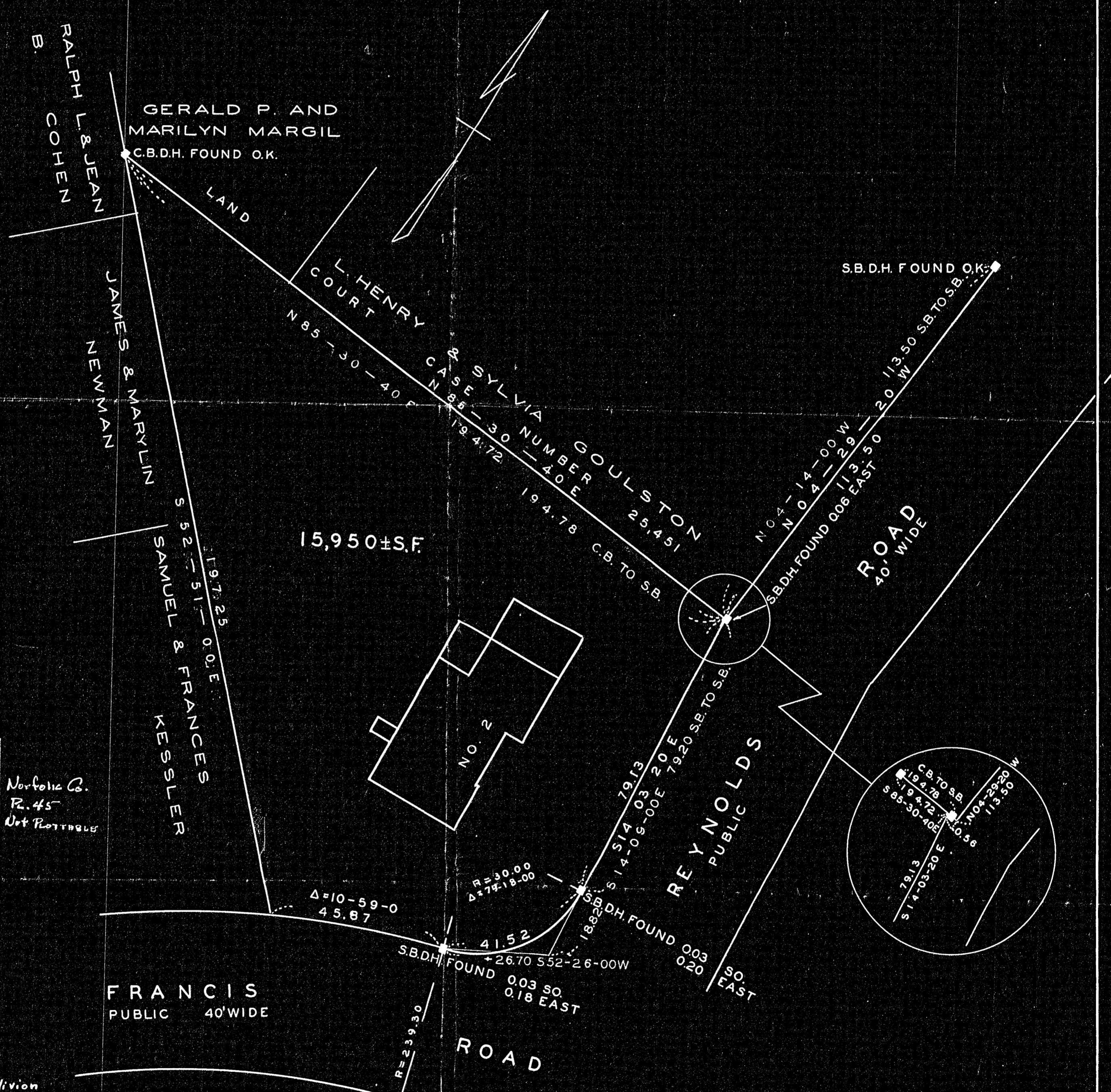


PLAN OF LAND IN SHARON NORFOLK COUNTY, MASS.

SCALE 1" = 20'

NOV. 5, 1962

THE SCHUYLER CLAPP COMPANY
BRAintree, MASS.



15,950 ± S.F.

S.B.D.H. FOUND O.K.

ROAD
40' WIDE

REYNOLDS
PUBLIC

FRANCIS
PUBLIC 40' WIDE

ROAD

32004
MAY BE FILED
1-4-63
Date By WES

Norfolk Co.
R. 45
Not Notarized

Approval under subdivision
Control Law not required

John C. Huberman
Wm. B. Crawford

Sharon Planning Board:
Dec. 12, 1962

I CERTIFY THAT THIS ACTUAL SURVEY WAS MADE
ON THE GROUND IN ACCORDANCE WITH THE LAND
COURT INSTRUCTIONS OF 1959 ON NOV. 2, 1962.

Fredrick T. Webb