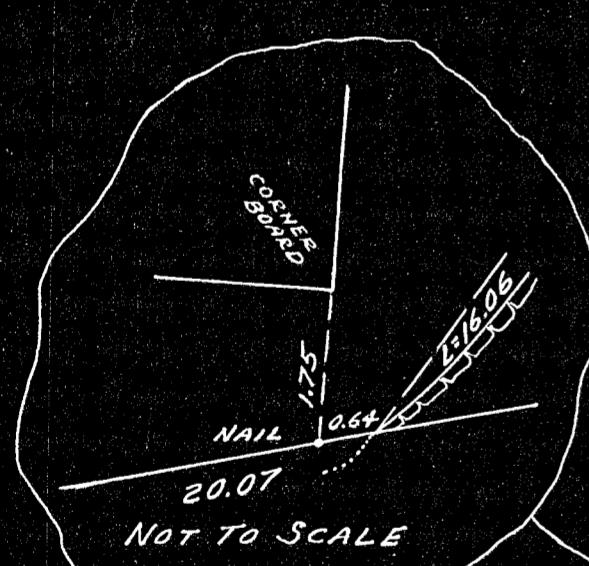
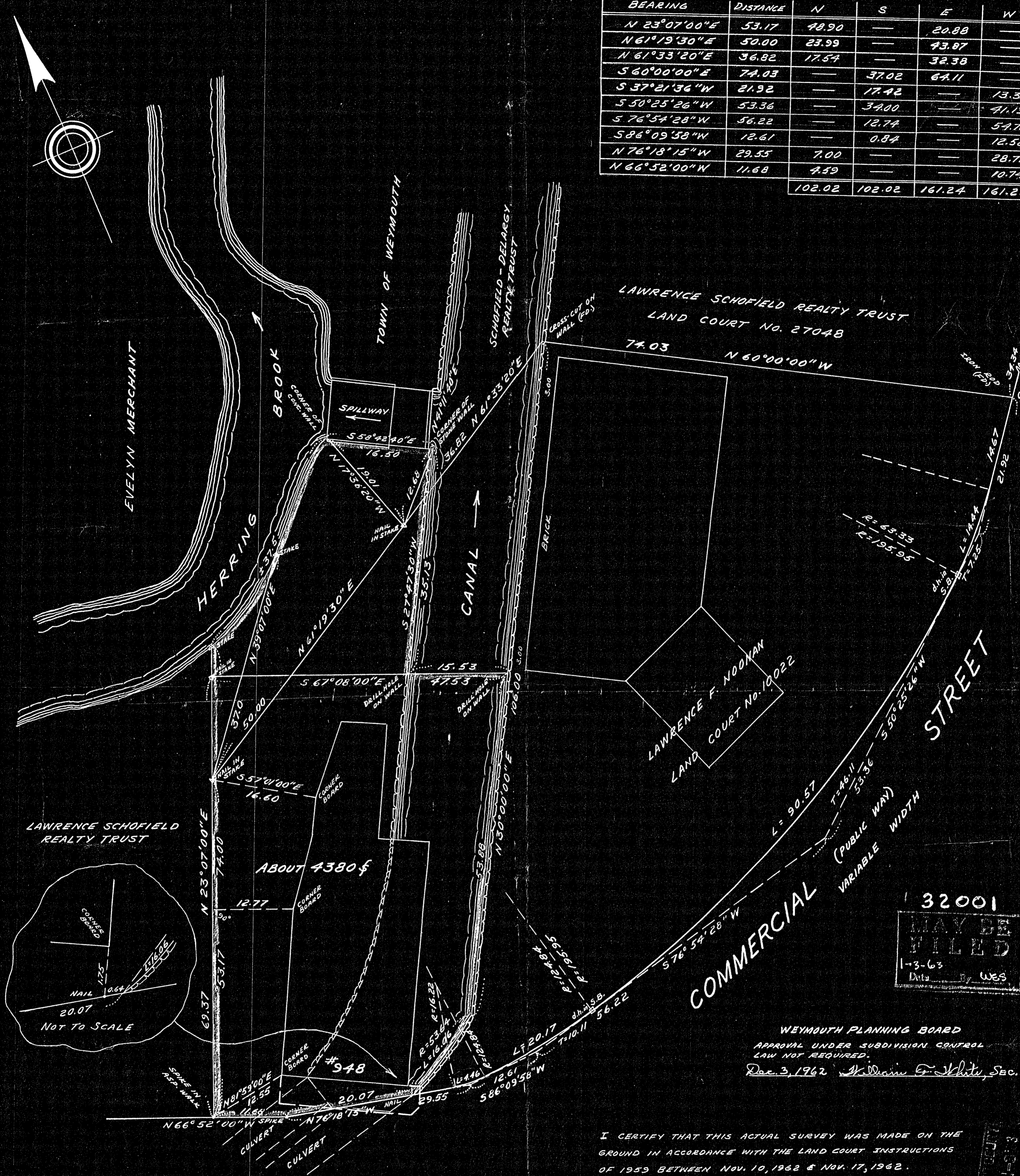


BEARING	DISTANCE	N	S	E	W
N 23°07'00"E	53.17	48.90	—	20.89	—
N 61°19'30"E	50.00	23.99	—	43.87	—
N 61°33'20"E	36.82	17.54	—	32.38	—
S 60°00'00"E	74.03	—	37.02	64.11	—
S 37°21'36"W	21.92	—	17.42	—	13.30
S 50°25'26"W	53.36	—	34.00	—	41.13
S 76°54'28"W	56.22	—	12.74	—	54.76
S 86°09'58"W	12.61	—	0.84	—	12.58
N 76°18'15"W	29.55	7.00	—	—	28.71
N 66°52'00"W	11.68	4.59	—	—	10.74
		102.02	102.02	161.24	161.22



32001
MAY BE FILED
1-3-63
Data by WES

WEYMOUTH PLANNING BOARD
APPROVAL UNDER SUBDIVISION CONTROL
LAW NOT REQUIRED.
Dec. 3, 1962 William F. White, Sec.

I CERTIFY THAT THIS ACTUAL SURVEY WAS MADE ON THE GROUND IN ACCORDANCE WITH THE LAND COURT INSTRUCTIONS OF 1959 BETWEEN NOV. 10, 1962 & NOV. 17, 1962.
11/19/62 Frank S. Lagrotteria

BROAD (PUBLIC WAY) STREET
VARIABLE WIDTH
PLAN OF LAND IN
WEYMOUTH-NORFOLK COUNTY-MASS.
SCALE 1"=10' NOV. 19, 1962
FRANK S. LAGROTTERIA - SURVEYOR
111 CENTRAL ST., SO. WEYMOUTH, MASS.

