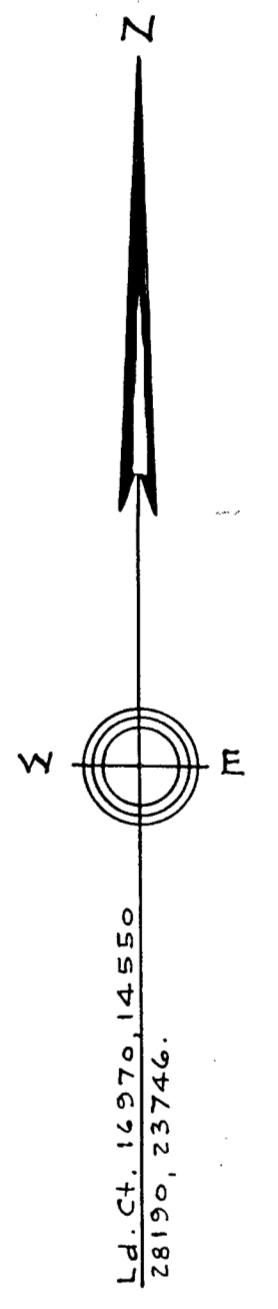


Approved for the Planning Board
 Control Law NOT Required

 Dover
 Planning Board
 11/23/62

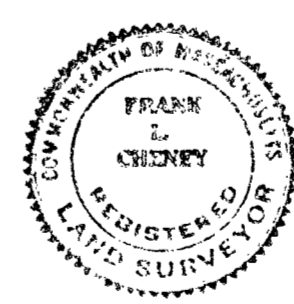


Plan of Land in DOVER, MASS.

Scale: 1 in. = 40 ft. Cheney Engineering Co. Needham, Mass.

Nov. 23, 1962.

| Property Line Traverse. | | | | | N. | W. |
|-------------------------|--------|--------|--------|--------|--------|----------|
| Bearing | Dist. | N. | S. | E. | W. | |
| S 88° 30' 20" W | 106.57 | | 2.78 | | 106.53 | 22857.02 |
| N 88° 09' 10" W | 148.38 | 4.78 | | | 148.30 | 22859.02 |
| N 19° 12' 00" W | 150.00 | 141.66 | | | 49.33 | 23000.68 |
| S 83° 49' 27" E | 364.49 | | 39.21 | 362.37 | | 22961.47 |
| S 20° 34' 40" E | 110.38 | | 103.34 | 38.80 | | 22858.13 |
| S 89° 20' 47" W | 97.02 | | 1.11 | | 97.01 | 22857.02 |
| | | 146.44 | 146.44 | 401.17 | 401.17 | |



I certify that this plan was prepared in accordance with the laws of the State of Massachusetts.

 Frank L. Cheney