

RIVERSIDE DR.

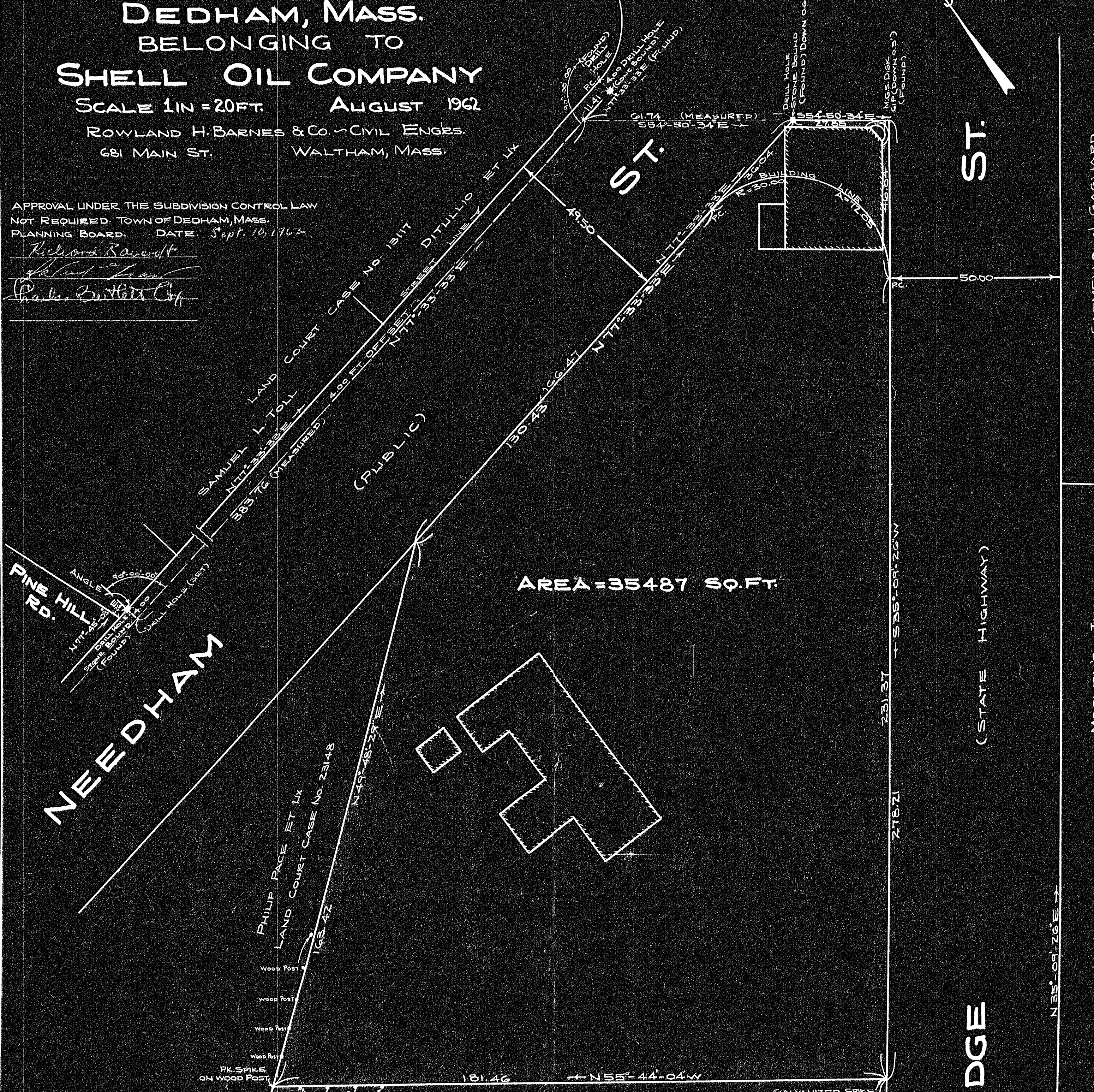
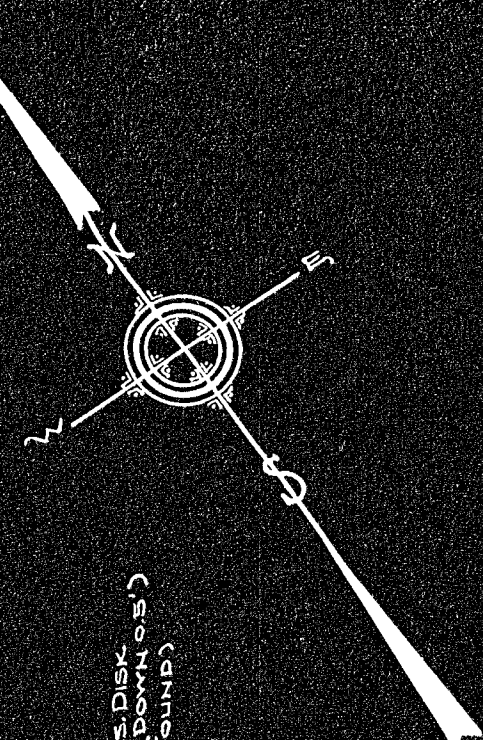
PLAN OF LAND
IN
DEDHAM, MASS.
BELONGING TO
SHELL OIL COMPANY

SCALE 1 IN = 20 FT. AUGUST 1962

ROWLAND H. BARNES & CO. CIVIL ENGRS.
681 MAIN ST. WALTHAM, MASS.

APPROVAL UNDER THE SUBDIVISION CONTROL LAW
NOT REQUIRED. TOWN OF DEDHAM, MASS.
PLANNING BOARD. DATE: Sept. 16, 1962

Richard Rowlett
Robert [unclear]
Charles [unclear]



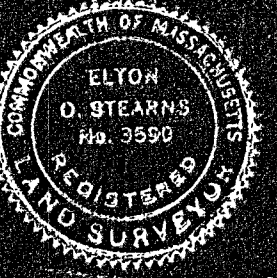
DIST.	BEARING	NORTH	SOUTH	EAST	WEST
166.47	N77°-33'-33"E	35.87		162.56	
27.85	S54°-50'-34"E		16.04	27.77	
278.21	S35°-09'-26"W		227.46		160.20
181.46	N55°-44'-04"W	102.17			149.96
163.42	N49°-48'-29"E	105.46		124.83	
		243.50	243.50	300.16	300.16

C.R. CONLEY & A.W. MALMQUIST

I CERTIFY THAT THIS ACTUAL SURVEY WAS
MADE ON THE GROUND IN ACCORDANCE WITH
THE LAND COURT INSTRUCTIONS OF 1959
BETWEEN AUGUST 8, 1962 AND AUGUST 17, 1962.

AUGUST 23, 1962 *Elton O. Stearns*
681 MAIN ST.
WALTHAM, MASS.

31934
MAILED
12-12-62
Dedham P. 3
WBS



W8873

LAND COURT CASE No. 4642