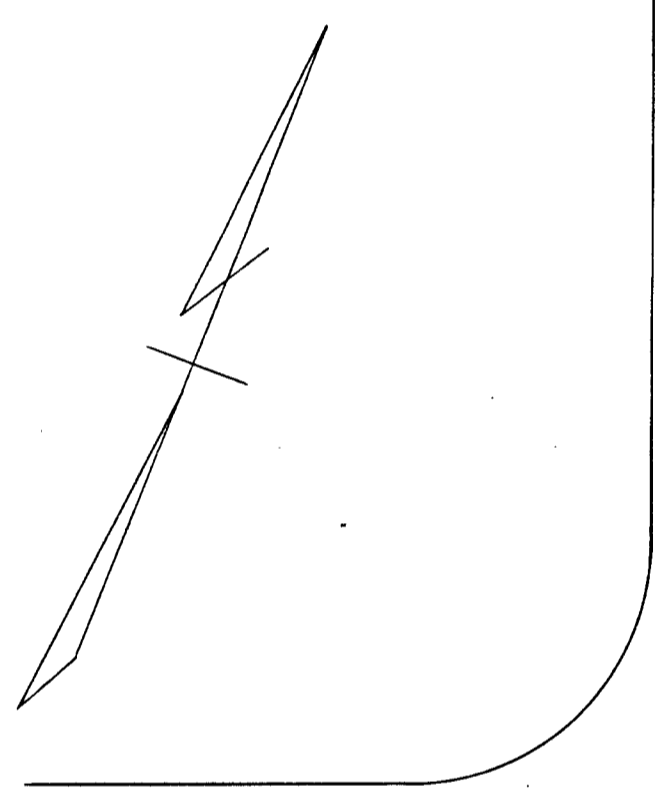
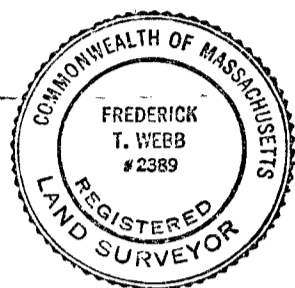


PLAN OF LAND IN BRAintree, NORFOLK CO., MASS.

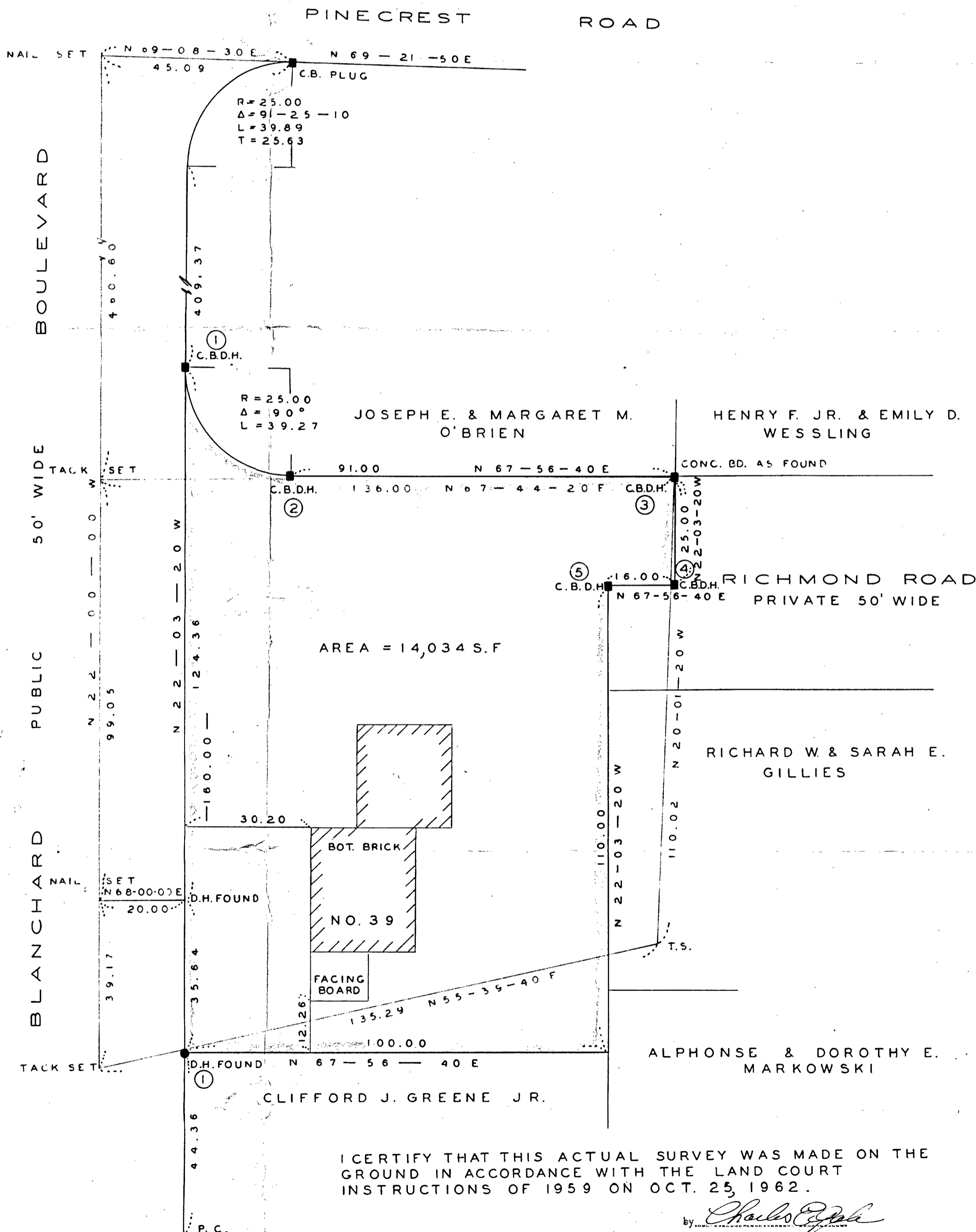
SCALE: 1"=20'

NOV. 1, 1962

THE SCHUYLER CLAPP COMPANY
BRAintree, MASS.



RICHMOND ROAD



NOTE: NEW DRILL HOLES SET IN ORIGINAL CONCRETE BOUNDS TO FIT PROPERTY CORNERS.

DIFFERENCE BETWEEN BOUNDS FOUND & CORRECTED

ORIGINALLY BOUNDS WERE:

C.B. 1	0.29 NO.	0.04 E.
C.B. 2	0.26 NO.	0.03 E.
C.B. 3	0.22 NO.	0.01 E.
C.B. 4	0.16 NO.	0.01 E.
C.B. 5	0.11 NO.	0.08 W.
D.H. 1	0.42 NO.	0.20 W.

I CERTIFY THAT THIS ACTUAL SURVEY WAS MADE ON THE GROUND IN ACCORDANCE WITH THE LAND COURT INSTRUCTIONS OF 1959 ON OCT. 25, 1962.

By *Charles E. Gale*
REGISTERED LAND SURVEYOR