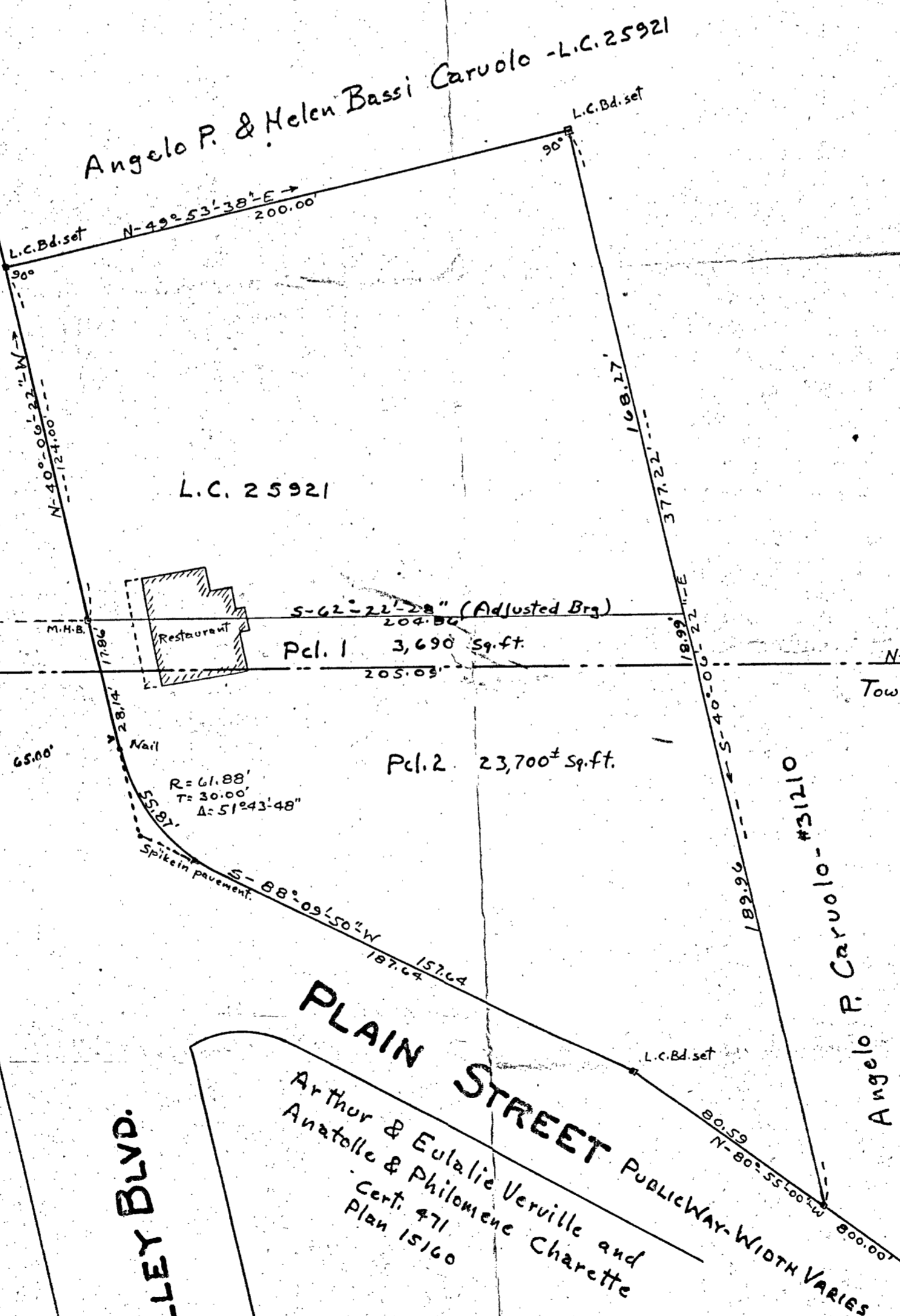
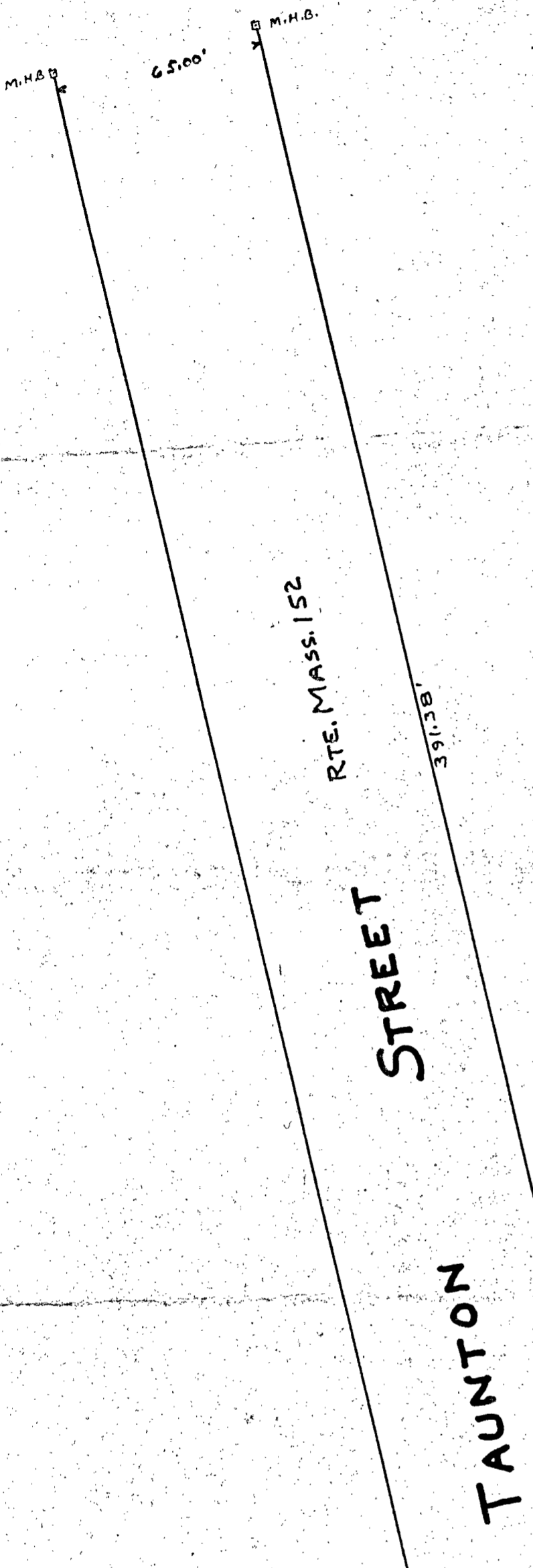


PLAN OF LAND SURVEYED FOR
CHRISTY ANDERSON
 NORTH ATTLEBOROUGH & PLAINVILLE, MASS.
 OCT. 1962 The W.T. Whalen Engineering Co. 1"=40'



Plainville Planning Board
 Approval under the Sub-Division
 Control Act not necessary

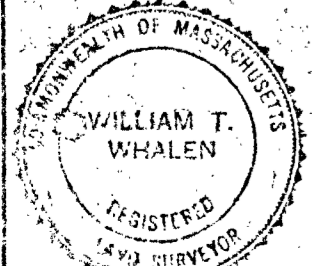
- Chairman
- Secretary
-
-
-

PLAINVILLE-NORFOLK COUNTY
 N. ATTLEBOROUGH-BRISTOL COUNTY

APPROVED UNDER THE SUB-DIVISION
 CONTROL ACT OF 1957
 WILLIAM T. WHALEN
 CHAIRMAN
 HAROLD R. ...
 SECRETARY
 RICHARD B. ...

OCT 31 1962

I certify that this actual survey was made on the ground
 in accordance with Land Court Instructions of 1959 between
 Oct. 15, 1962 and Oct. 27, 1962. William T. Whalen
 Oct. 30, 1962



W. T. WHALEN ENGINEERING CO.
 318 CHESTNUT STREET
 NORTH ATTLEBOROUGH, MASS.

FRANCIS J. KELLEY BLVD.

PLAIN STREET PUBLICWAY-WIDTH VARIES
 Arthur & Eulalie Verville and
 Anatole & Philomene Charette
 Cert. #71
 Plan 15160

Bearing	Dist	Lat. N	Lat. S	Dep. E	Dep. W
N-80°55'-00" W	80.59	12.723			79.579
S-88°09'-50" W	187.64		6.913		187.594
N-40°06'-22" W	200.00	152.971			128.891
N-49°53'-38" E	200.00	128.841		152.971	
S-40°06'-22" E	377.22		288.518	243.000	
		294.535	294.530	395.971	395.964