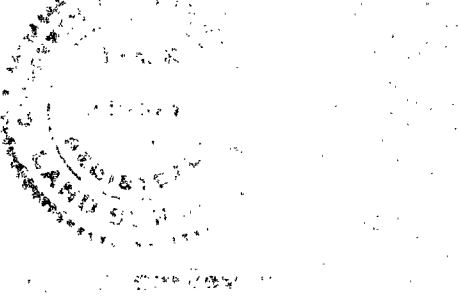


Plan of Land in
CANTON, MASS.

Scale: 1 in. = 100 ft. Cheney Engineering Co.
Needham, Mass.
Jan. 10, 1957.



of 1950. *Frank L. Cheney*

Survey closure 1: 24307.

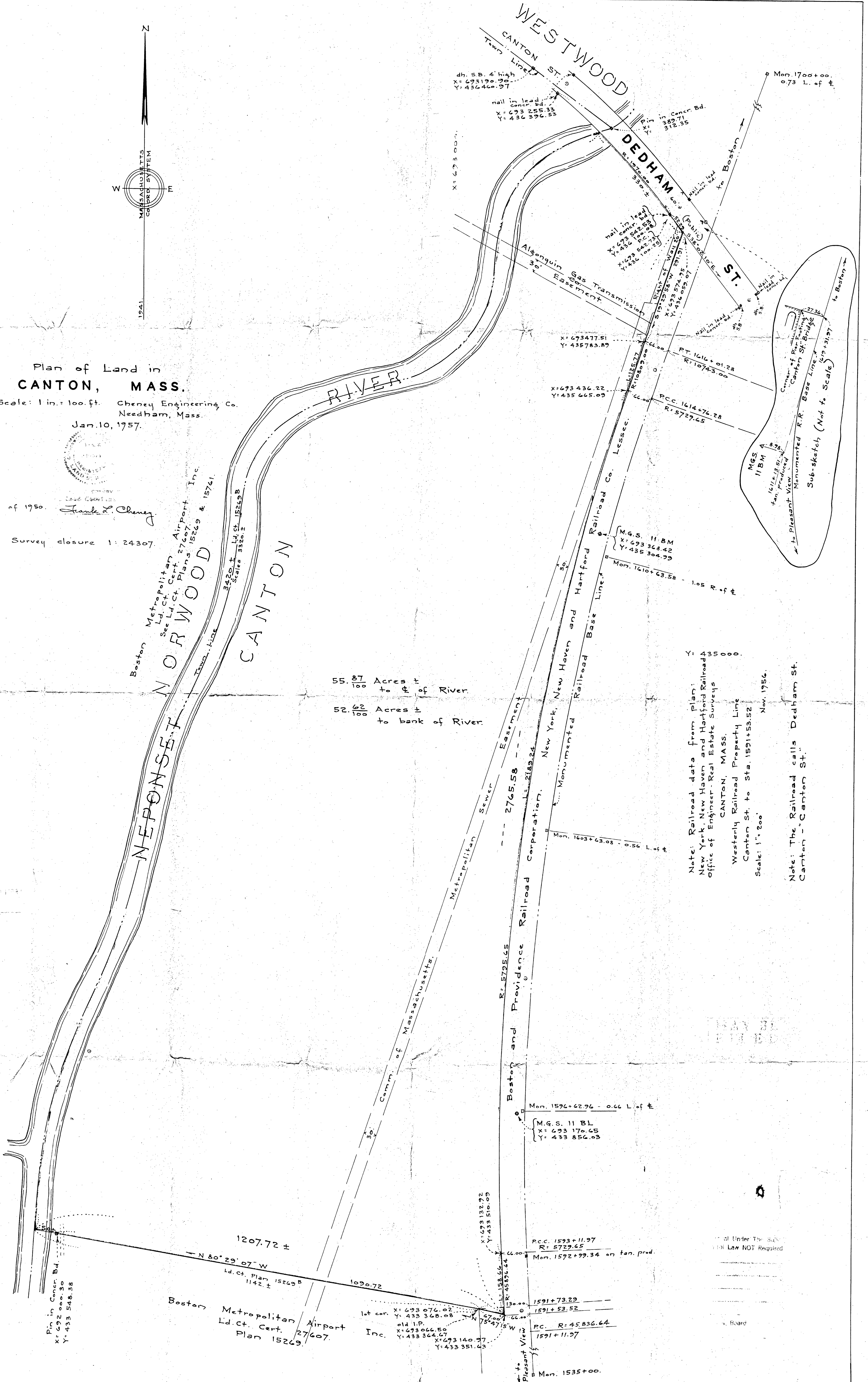
Boston Metropolitan
Ld. Ct. Plan 15269
See Ld. Ct. Cent. 27607
Inc. Airport
Plans 15269 & 15741.

55.87 Acres ±
to # of River

52.62 Acres ±
to bank of River

Note: Railroad data from plan:
New York, New Haven and Hartford Railroad
Office of Engineer - Real Estate Surveys
CANTON, MASS.
Westerly Railroad Property Line
Canton St. to Sta. 1591+53.52
Scale: 1" = 200' Nov. 1956.

Note: The Railroad calls Dedham St.
Canton - "Canton St."



MASS. REG. SURV. 15269

Under The Seal
of the Law NOT Required

Board