

PLAN OF LAND IN STOUGHTON MASS ESTATE OF SOPHIE M. DEARDIN (LITTLEFIELD)

SCALE 1" = 20'

AUG. 27 1962

EDWARD C. PETERSON
74 LINCOLN ST. STOUGHTON MASS.

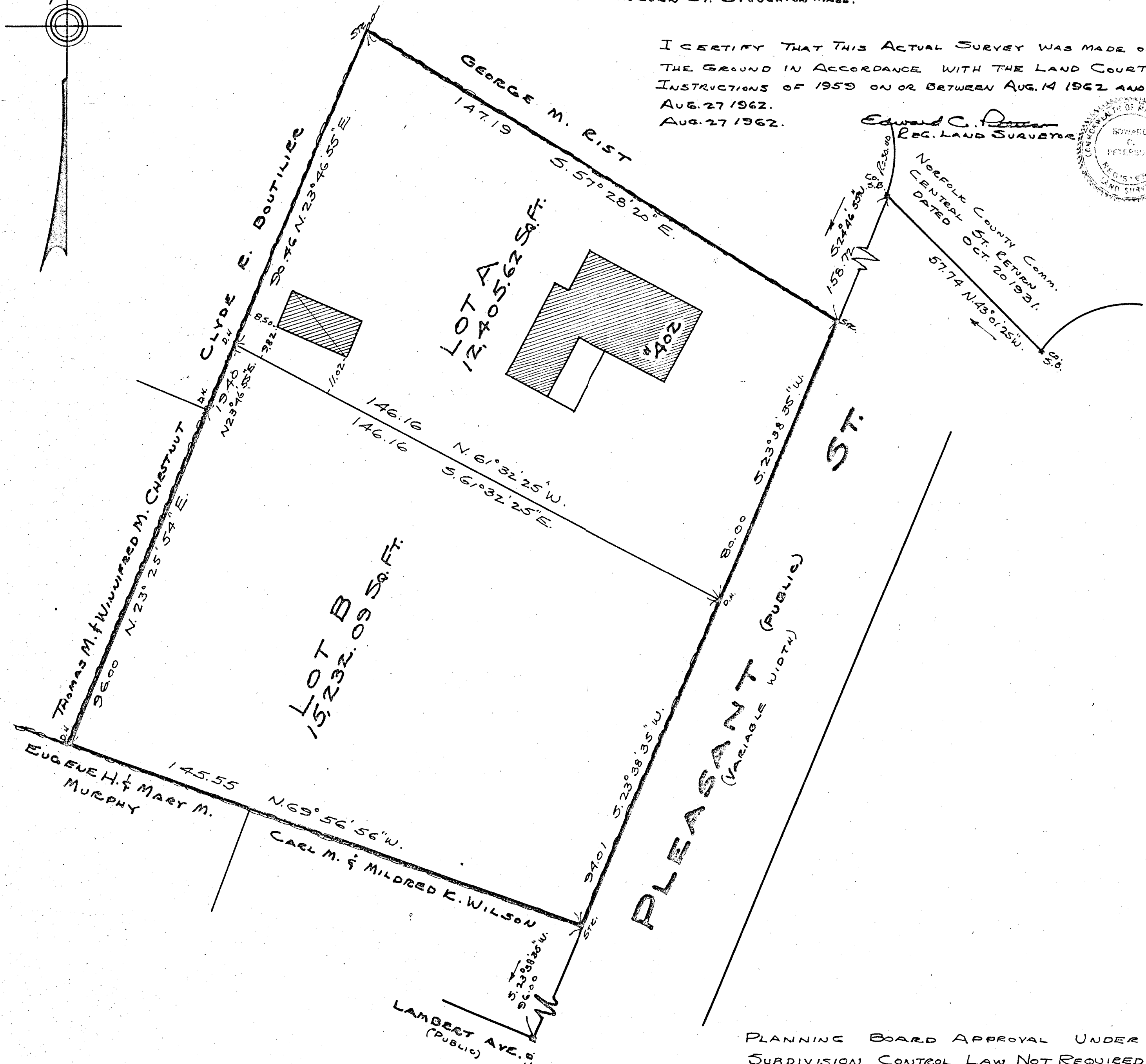
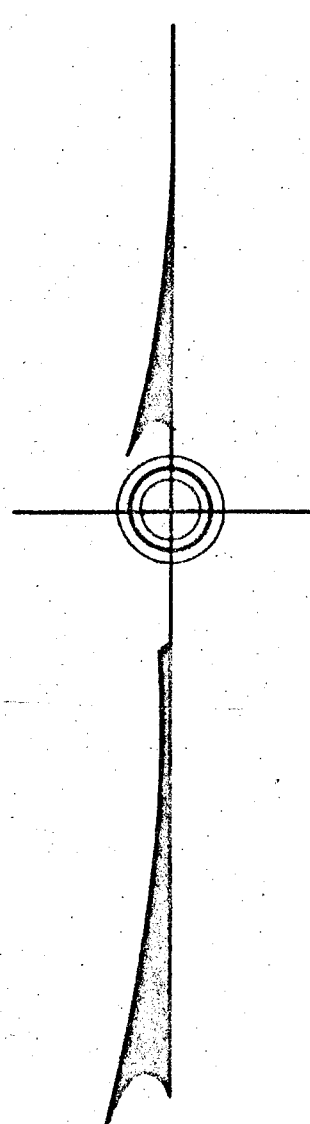
REG. PROF. ENG. & REG. LAND SURVEYOR.

I CERTIFY THAT THIS ACTUAL SURVEY WAS MADE ON THE GROUND IN ACCORDANCE WITH THE LAND COURT INSTRUCTIONS OF 1959 ON OR BETWEEN AUG. 14 1962 AND AUG. 27 1962.
AUG. 27 1962.

Edward C. Peterson
REG. LAND SURVEYOR



NORFOLK COUNTY Comm.
CENTRAL ST. RETURN
DATED OCT. 20 1961.



LOT A

DIST.	BEARING	LATITUDE		DEPARTURE	
		N	S	E	W
80.00	S.23°38'35"W.	—	73.28	—	32.08
146.16	N.6°32'25"W.	69.65	—	—	128.50
90.46	N.23°46'55"E.	82.78	—	36.48	—
147.19	S.57°28'20"E.	—	79.15	124.10	—
		152.43	152.43	160.58	160.58

LOT B

DIST.	BEARING	LATITUDE		DEPARTURE	
		N	S	E	W
94.01	S.23°38'35"W.	—	86.12	—	37.70
146.55	N.6°56'56"W.	49.90	—	—	136.73
96.00	N.23°25'54"E.	88.08	—	38.17	—
19.40	N.23°34'54"E.	17.79	—	7.76	—
146.16	S.6°32'25"E.	—	69.65	128.50	—
		155.77	155.77	174.43	174.43

PLANNING BOARD APPROVAL UNDER SUBDIVISION CONTROL LAW NOT REQUIRED.

DATE _____ SEC.

PLANNING BOARD
TOWN OF STOUGHTON MASS.

APPROVED: _____

DATE _____ BOARD OF HEALTH
TOWN OF STOUGHTON MASS.