

WINFIELD ST
(Public - 40 wide)

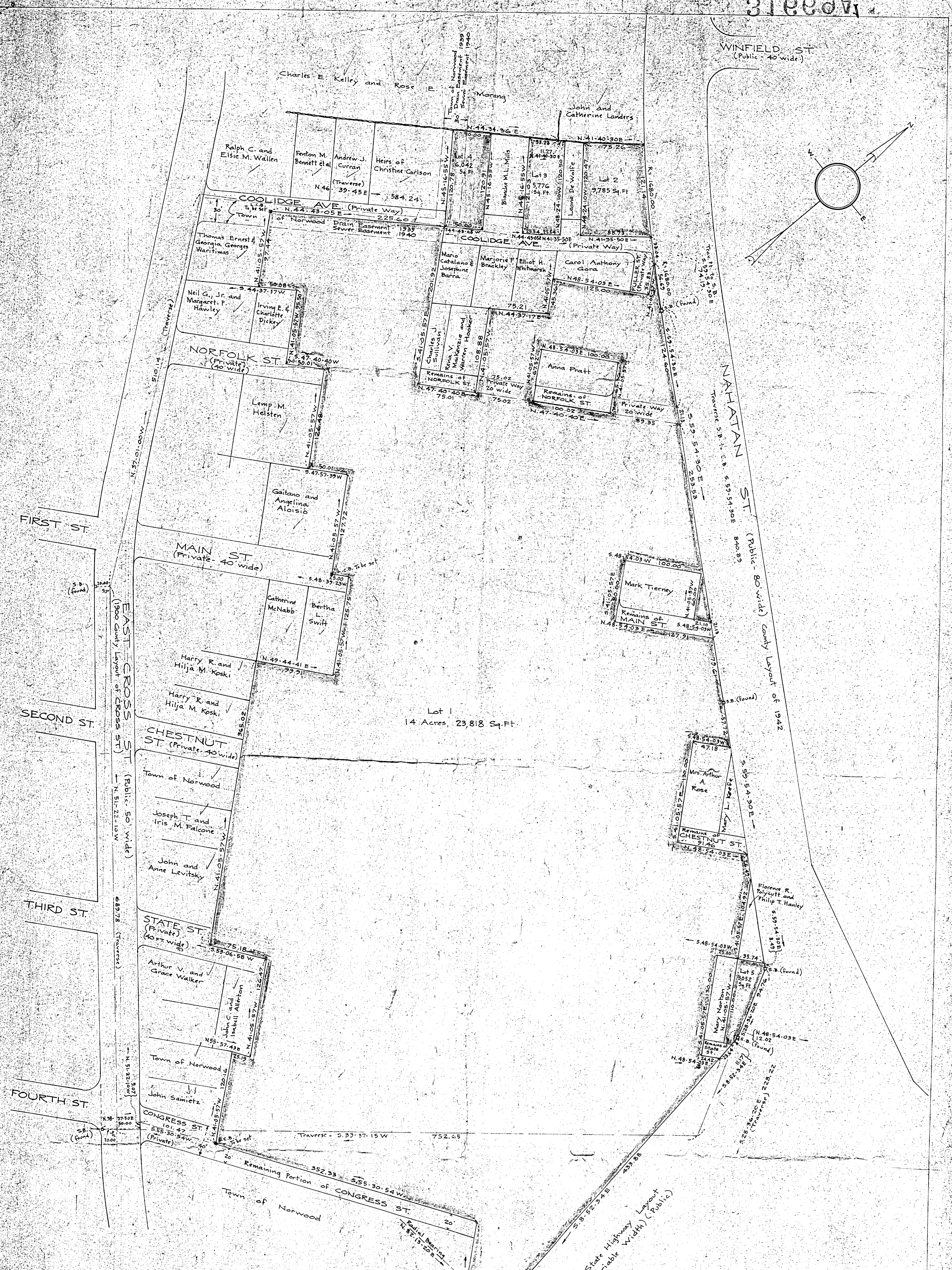
NATHAN ST
(Public - 80 wide) County Layout of 1942

PLAN OF LAND IN NORWOOD, MASS.

SCALE - 1" = 50 FT. AUG 15, 1962
NORWOOD ENGINEERING CO. INC.
CIVIL ENGINEERS
NORWOOD, MASS.

I certify that this actual Survey was made on the ground in accordance with the Land Court Instructions of 1959 on or between May 19, 1962 and June 12, 1962
AUG 15, 1962.

David E. Schaefer
1420 Providence Hwy, Norwood, Mass.



Approval under Subdivision Control
Law not required

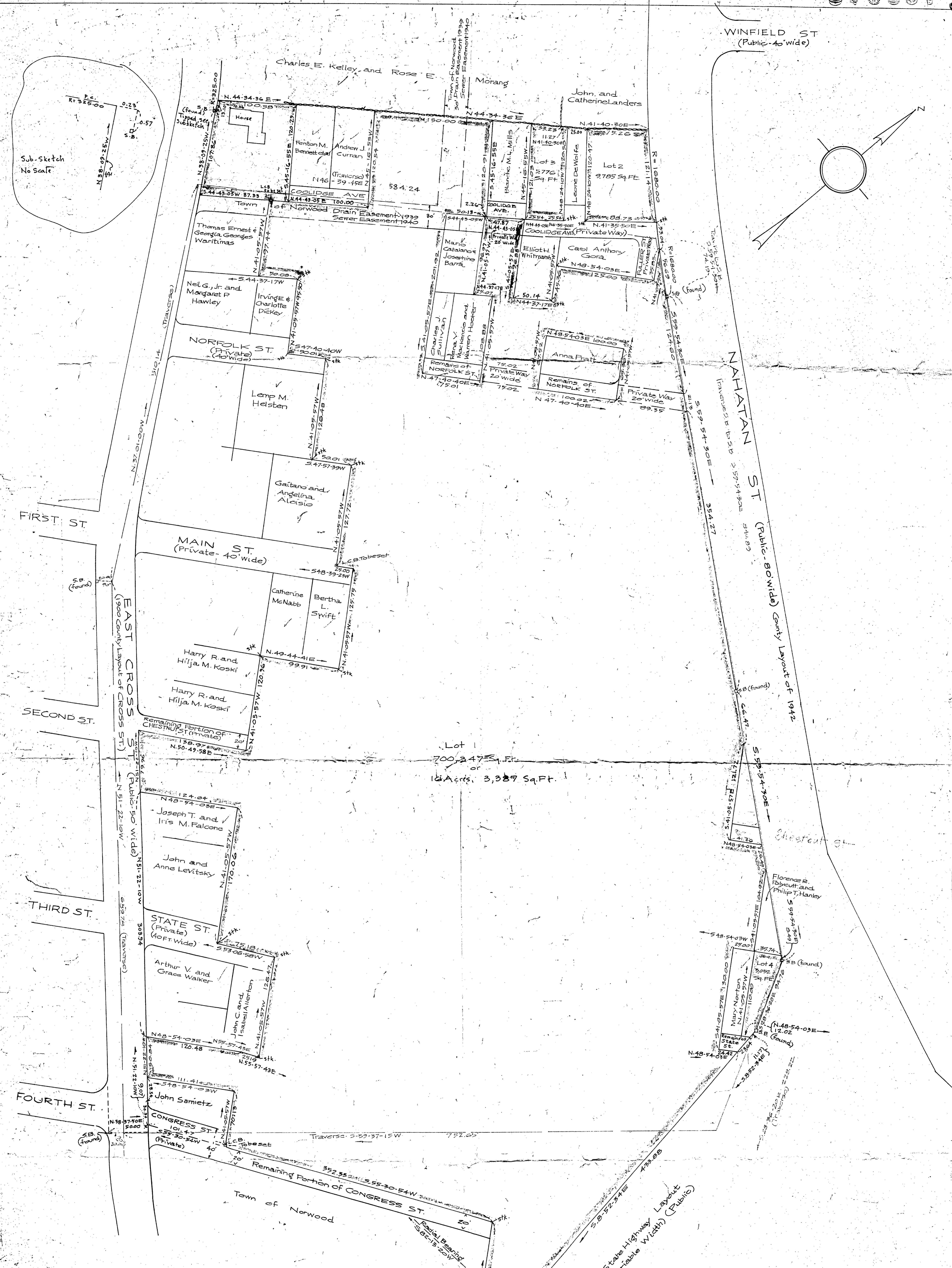
Walter R. Ryan, Engineer
Aug 21, 1962

Planning Board - Town of Norwood

DECKER PLAN 31669A1
MAY BE FILED
 8-21-62 R-C.C.
 Date By
 845.2
 Norwood, Mass.
 N.G.

WEST BORDER ROAD
(Public - 50 wide)





WINFIELD ST (Public-40 wide)

NAHATAN ST (Public-60 wide) County Layout of 1942

FIRST ST

SECOND ST

THIRD ST

FOURTH ST

EAST CROSS ST (Public-50 wide) (1900 County Layout of Cross St)

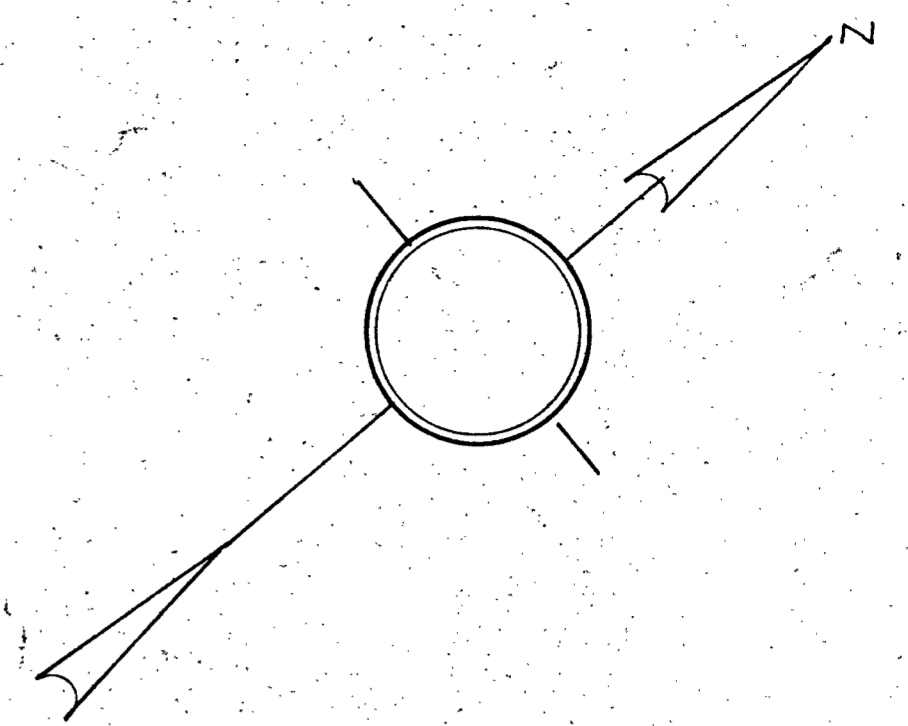
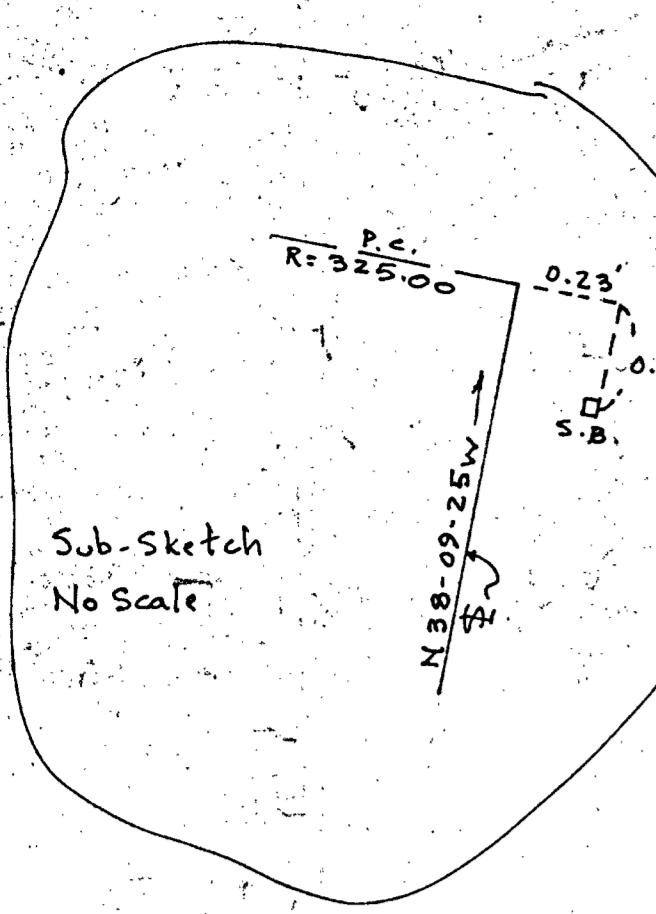
MAIN ST (Private-40 wide)

STATE ST (Private) (40ft wide)

CONGRESS ST (Private)

Remaining Portion of CONGRESS ST

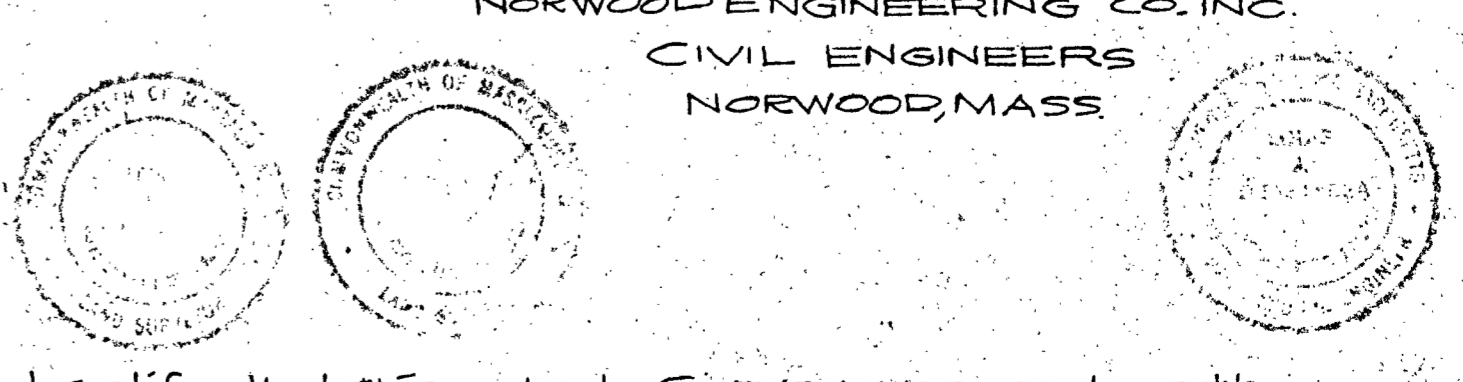
WEST BORDER ROAD (Public-150 wide)



Approval under Subdivision Control
Law not required
Francis Wiegand
John J. Ryan
Planning Board-Town of Norwood

PLAN OF LAND
IN
NORWOOD, MASS.

SCALE = 1" = 50 FT JAN 21, 1965
NORWOOD ENGINEERING CO. INC.
CIVIL ENGINEERS
NORWOOD, MASS.



I certify that this actual Survey was made on the ground in accordance with the Land Court Instructions of 1959 on or between May 19, 1962 and Jan. 8, 1965
Date Jan. 21, 1965
Francis Wiegand
1420 Providence Hwy, Norwood, Mass.

3166942
2-17-65 R.C.C.
Date