

RECEIVED

FEB 23 1962

PLANNING BOARD
RANDOLPH

Approval not required under
the Sub-Division Control Act
Randolph Planning Board, FOR RECORDING PURPOSES ONLY

Manoel T. Capron
Ralph A. Howe
Roger L. Miles

PLAN OF LAND RANDOLPH, MASS.

SCALE 1"=40' FEB. 14, 1962
L.W. DECELLE SURVEYORS INC.

LAND SURVEYORS INC.
285 UNION ST. RANDOLPH

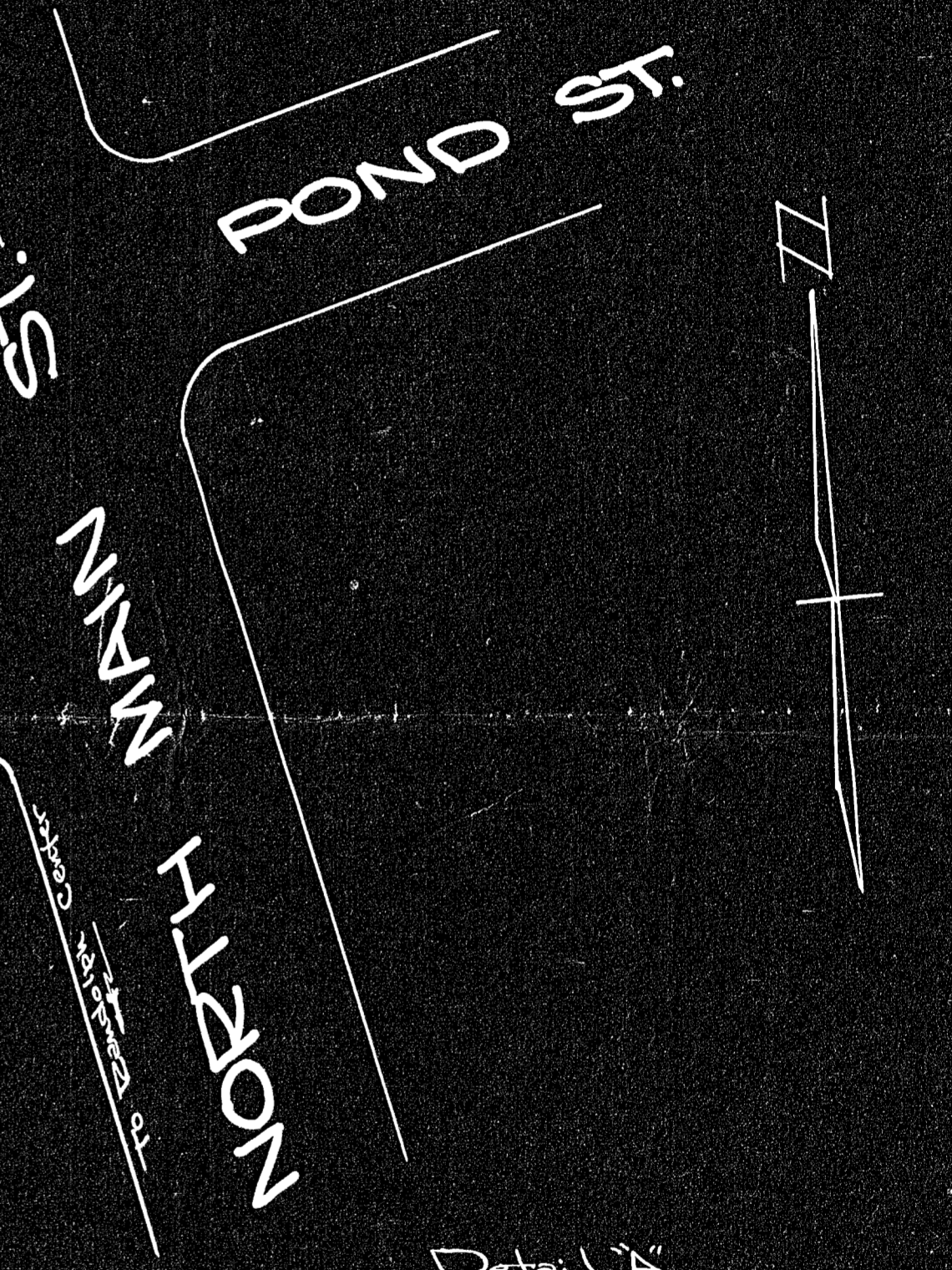
PROPERTY OWNER:
Loretta L. Murphy
1125 No. Main St.
Randolph, Mass.



BEARING	BLOCK TRAVERSE			
	LENGTH	E	W	N S
S 70° 53' 10" W	53.70		50.46	17.48
S 64° 02' 10" W	49.28		44.30	21.57
S 72° 40' 50" W	139.66		127.60	39.92
N 00° 05' 00" W	20.73	1.13	0.03	20.73
N 05° 15' 55" E	133.18	12.22		132.62
N 71° 57' 50" E	8.88	8.74		2.75
N 89° 12' 53" E	Chord 199.43	199.41		2.73
S 01° 39' 40" E	79.99	2.32		79.96
		222.39	222.33	158.83 159.93



See
Detail 'A'
Lot C



I certify that this actual survey was made on the ground
in accordance with the Land Court Instructions of 1959
between Feb. 14, and Feb. 16, 1962.

Robert A. DeCelle

I certify that this plan was made in accordance with the
Land Court Instructions of 1959

Robert A. DeCelle

Randolph
R. 410

31660
MAY BE
FILED
8-17-62
Data by Was

OLD
DOW ST.
County Layout Nov. 28, 1922, Public

