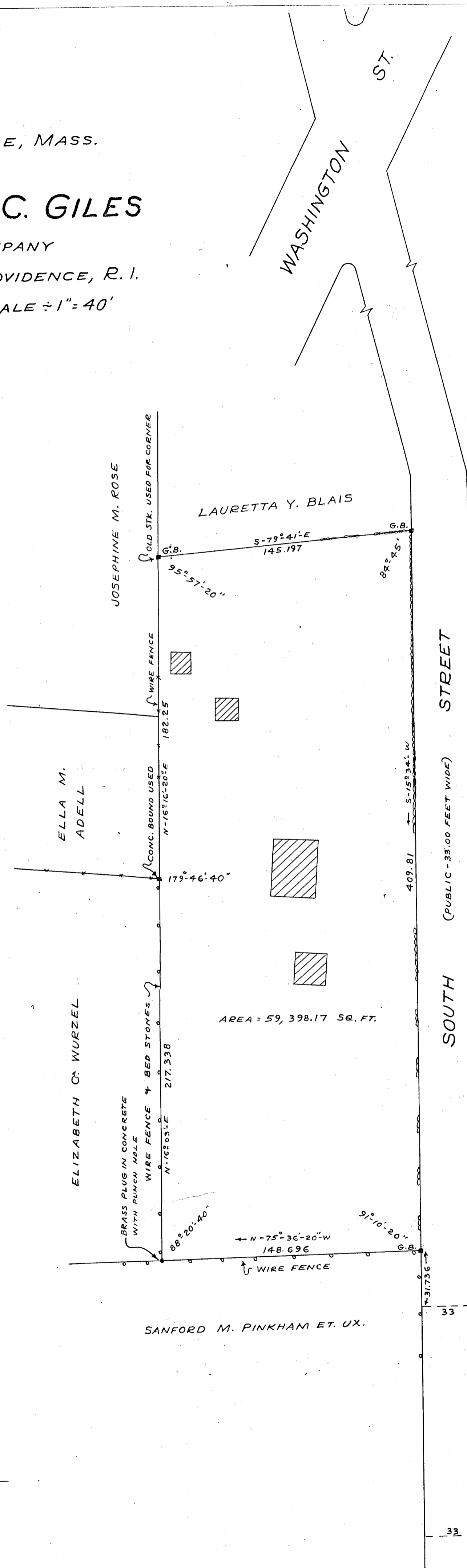
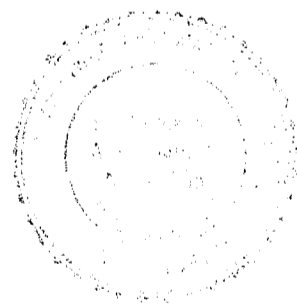
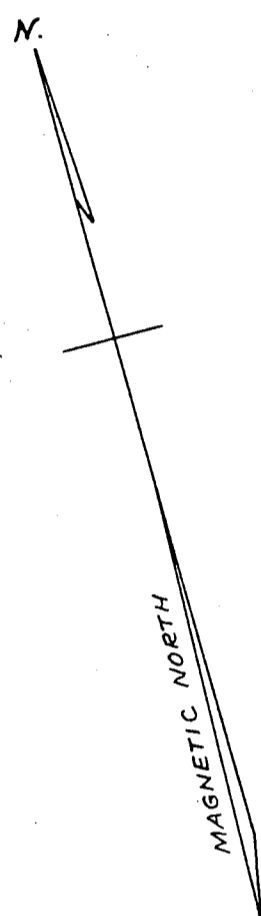


PLAN OF LAND IN WALPOLE, MASS.  
 BELONGING TO  
**RUTH G. AND HAROLD C. GILES**  
 BY WATERMAN ENG. COMPANY  
 450 NORTH BROADWAY, EAST PROVIDENCE, R. I.  
 DECEMBER, 1961 SCALE = 1" = 40'



I CERTIFY THAT THIS ACTUAL SURVEY  
 WAS MADE ON THE GROUND IN  
 ACCORDANCE WITH THE LAND COURT  
 INSTRUCTIONS OF 1950 ON OR BETWEEN  
 DEC. 7<sup>TH</sup> AND DEC. 18, 1961

*Fredrick V. Waterman Jr.*

ALICE M. MASON  
 CERTIFICATE No. 64614  
 REGISTRATION BK. 324 P. 14  
 CASE No. 28868A

33 33  
 90° 90°  
 L.C.B. L.C.B.  
 165.00 165.00  
 S-74°-26'-E N-74°-26'-W  
 34.98 34.98  
 L.C.B. L.C.B.  
 90° 90°  
 165.00 165.00  
 S-74°-26'-E N-74°-26'-W  
 L.C.B. L.C.B.  
 34.98 34.98  
 L.C.B. L.C.B.  
 90° 90°  
 165.00 165.00  
 S-74°-26'-E N-74°-26'-W  
 L.C.B. L.C.B.  
 34.98 34.98  
 L.C.B. L.C.B.