

21.046 Acres

Plan of Land in
DOVER, MASS.
Scale: 1 in. = 40 ft. Chenev Engineering Co.
Needham, Mass.
June 29, 1962.

Robert Alice H. Allison
31583
MAY BE FILED
7-11-62
Date by Wes

I certify that this actual survey was made on the ground in accordance with the Land Court instructions of 1959.
Frank L. Chenev
Civil Engineer

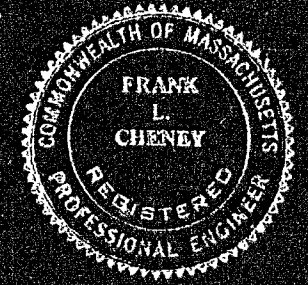
DECREE PLAN

Order	Papers
Traverse	Files
Adm.	Books
Survey	Books
Math.	Books
Inspected	Books
Approved	Books

Boston Edison Co.
Ld. Ct. Cert. 64451.
Plan 22256A

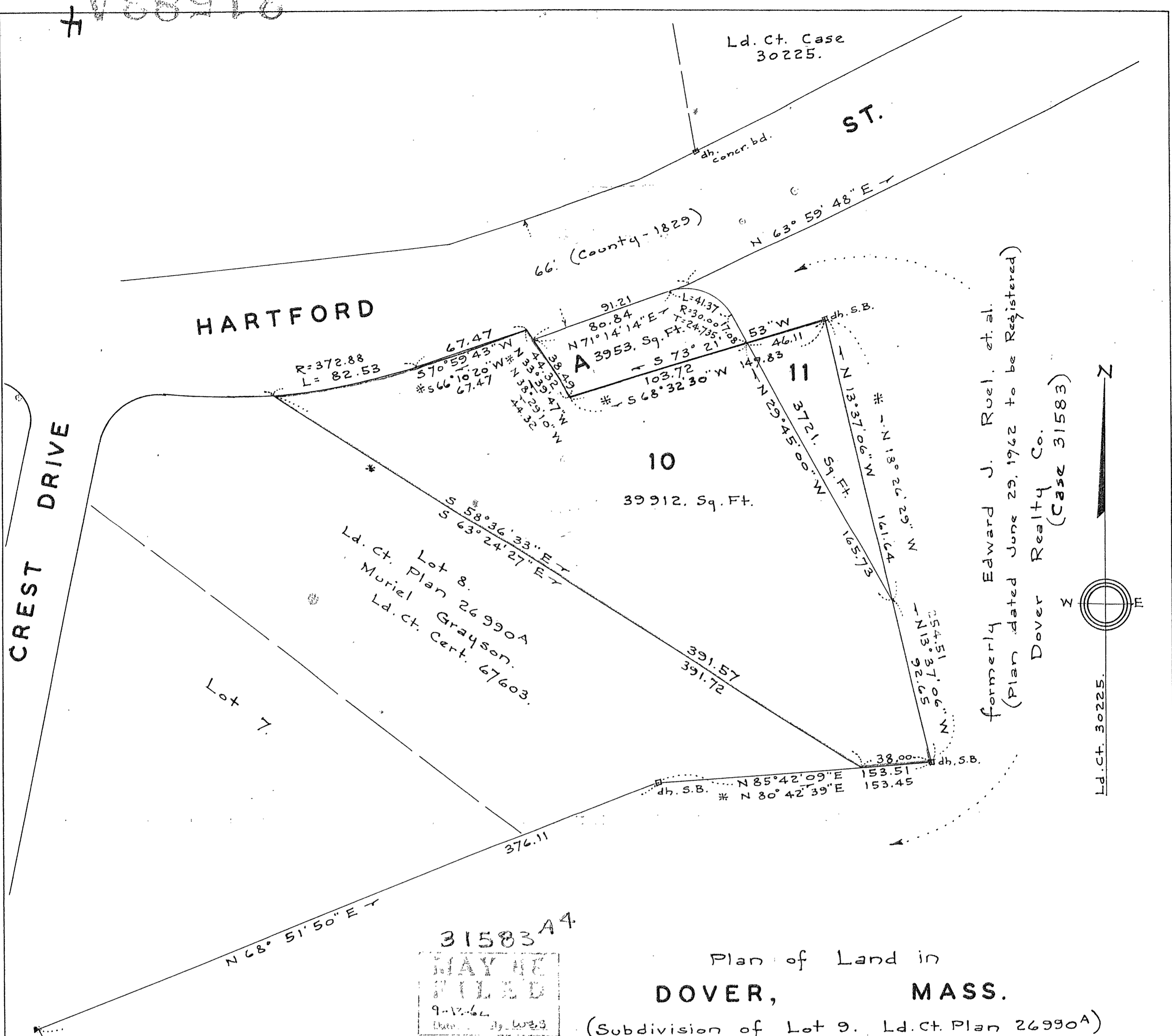
Approval Under The Subdivision Control Law NOT Required
John M. Demme

Done Planning Board
Date July 27, 1962



Survey closure: 1 in 45590.

31583A



31583A4
 MAY BE FILED
 9-12-62
 Date of Lodging

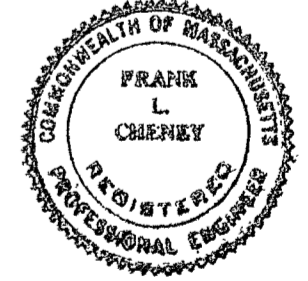
Plan of Land in
DOVER, MASS.

(Subdivision of Lot 9. Ld.Ct. Plan 26990A)
 Scale: 1 in. = 40 ft. Cheney Engineering Co.
 Needham, Mass.
 July 17, 1962.

Note: * denotes data as shown on Ld.Ct. Plan 26990A



I certify that this plan was made in accordance with Land Court instructions of 1959.
 Frank L. Cheney
 Civil Engineer



Since Lot A is to be added to Lot 10, and Lots A and 11 are not to be used as individual building lots, Approval Under The Subdivision Control Law NOT Required:

John M. Deering

Note: Lots 10 + 11 will be shown on plan 26990 B, Sept. 12, 1962

Dover Planning Board
 Date Aug. 2, 1962

Lot A Traverse					
Bearing	Dist.	N.	S.	E.	W.
N 71° 14' 14" E	80.84	26.00		76.54	
S 18° 45' 46" E	30.00		28.40	9.65	
N 60° 15' 00" E	30.00	14.89		26.04	
S 29° 45' 00" E	17.08		14.83	8.48	
S 73° 21' 53" W	103.72		29.69		99.38
N 33° 39' 47" W	38.49	32.03			21.33
		72.92	72.92	120.71	120.71
Lot 11					
S 13° 37' 06" E	161.64		157.09	38.06	
N 29° 45' 00" W	165.73	143.89			82.24
N 73° 21' 53" E	46.11	13.20		44.18	
		157.09	157.09	82.24	82.24
Lot 10					
N 85° 42' 09" E	38.00	2.85		37.89	
N 13° 37' 06" W	92.65	90.05			21.81
N 29° 45' 00" W	165.73	143.89			82.24
S 73° 21' 53" W	103.72		29.69		99.38
N 33° 39' 47" W	44.32	36.89			24.57
S 70° 59' 43" W	67.47		21.97		63.79
N 19° 00' 17" W	372.88	352.55			121.43
S 06° 19' 24" E	372.88		370.61	41.07	
S 58° 36' 33" E	391.57		203.96	334.26	
		626.23	626.23	413.22	413.22

31583A