

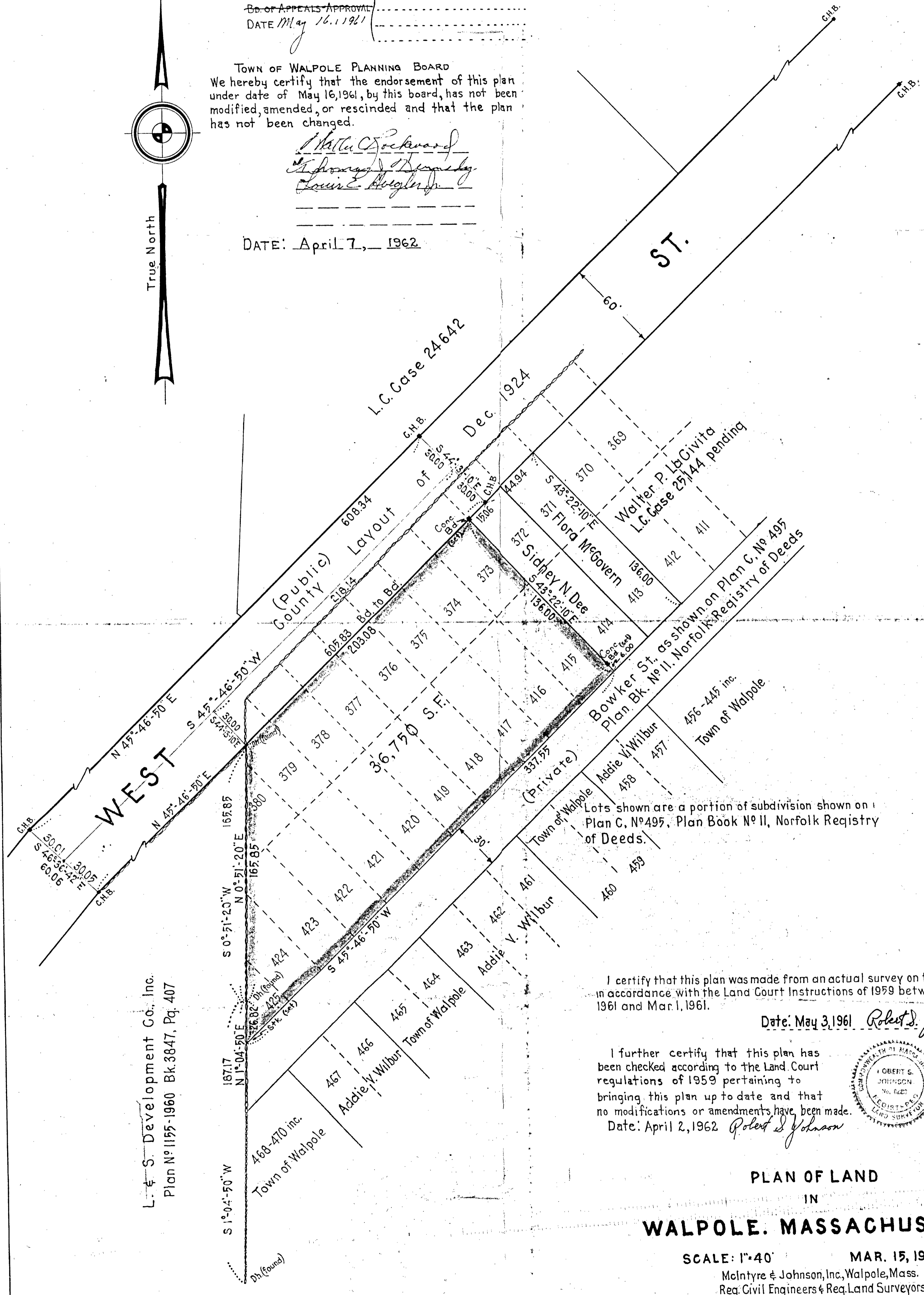
TOWN OF WALPOLE  
~~PLANNING Bd. APPROVAL~~  
 APPROVAL NOT REQUIRED  
~~Bo. of APPEALS APPROVAL~~  
 DATE *May 16, 1961*

*Der. L. S. Johnson*  
*Louis E. Houghton*  
*Walter C. Lockwood*

TOWN OF WALPOLE PLANNING BOARD  
 We hereby certify that the endorsement of this plan under date of May 16, 1961, by this board, has not been modified, amended, or rescinded and that the plan has not been changed.

*Walter C. Lockwood*  
*Louis E. Houghton*  
*Louis E. Houghton*

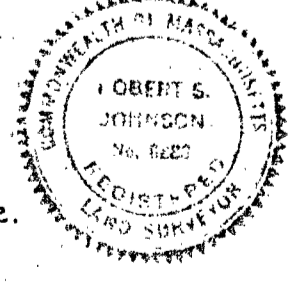
DATE: April 7, 1962



I certify that this plan was made from an actual survey on the ground in accordance with the Land Court Instructions of 1959 between Jan. 16, 1961 and Mar. 1, 1961.

Date: May 3, 1961 *Robert S. Johnson*

I further certify that this plan has been checked according to the Land Court regulations of 1959 pertaining to bringing this plan up to date and that no modifications or amendments have been made.  
 Date: April 2, 1962 *Robert S. Johnson*



PLAN OF LAND  
 IN  
**WALPOLE, MASSACHUSETTS**

SCALE: 1"=40' MAR. 15, 1961  
 McIntyre & Johnson, Inc., Walpole, Mass.  
 Reg. Civil Engineers & Reg. Land Surveyors