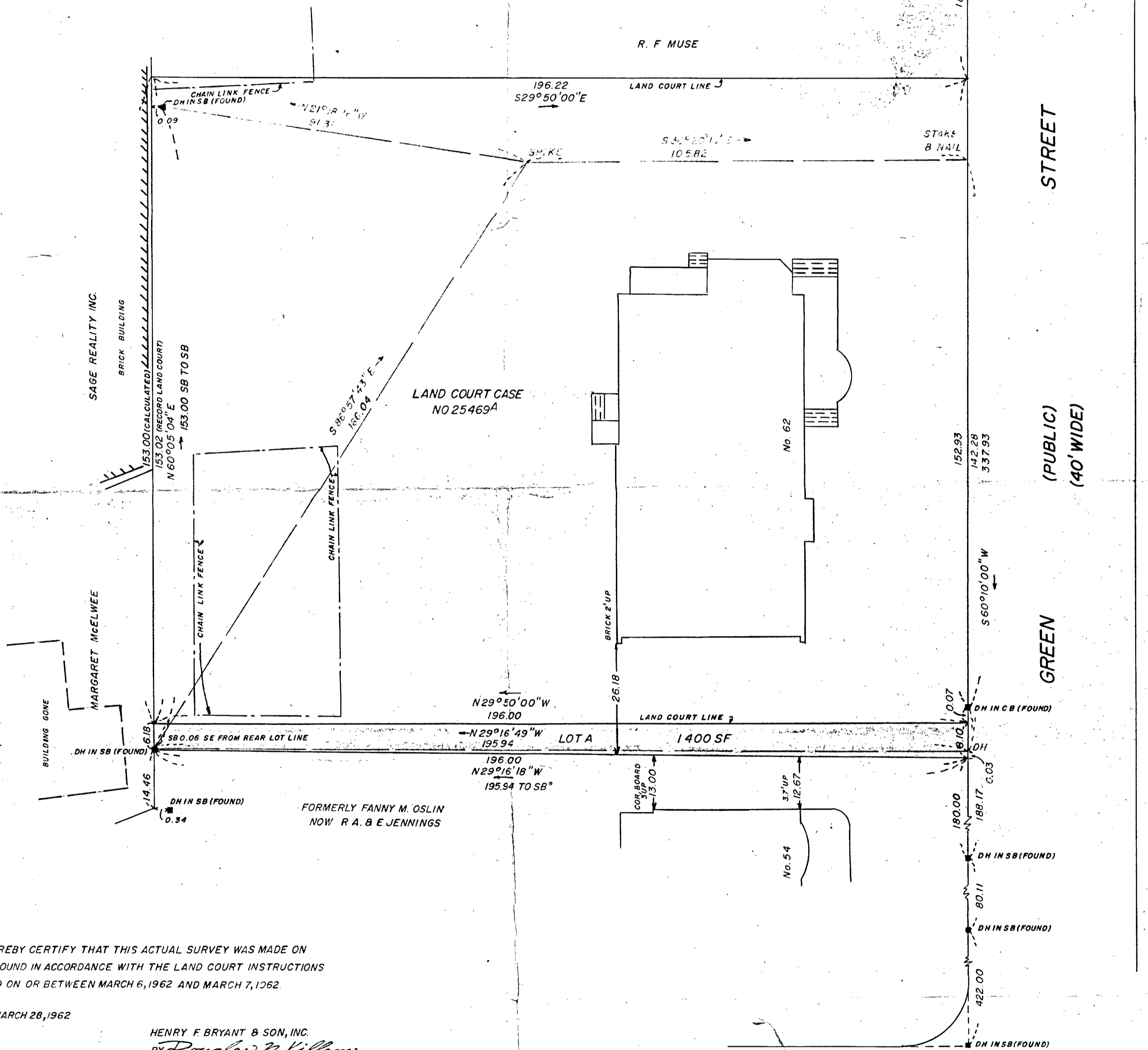
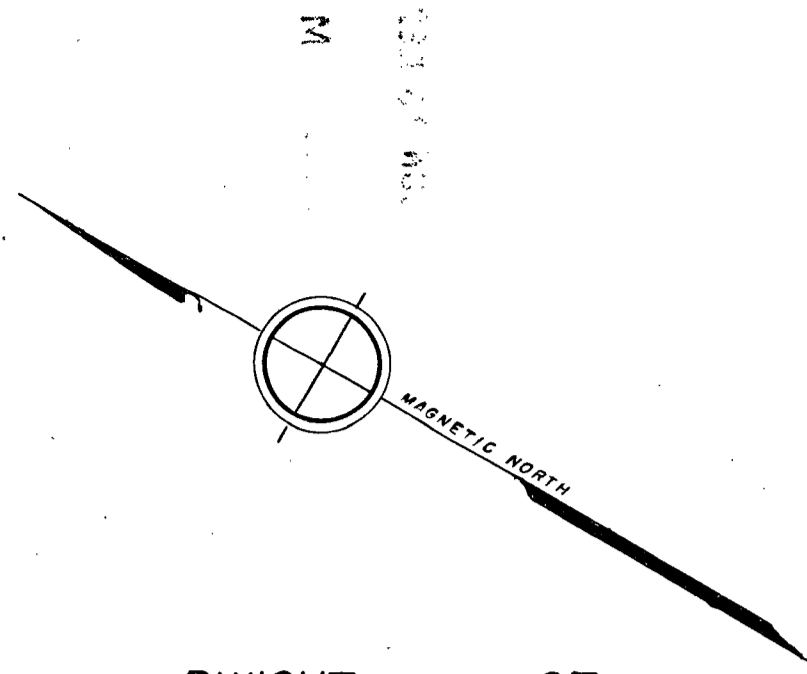


TRAVERSE TABLE ON TRANSIT LINES

INTERIOR ANGLE	DEFLECTION ANGLE	BEARING	DISTANCE	LATITUDE		DEPARTURE	
				NORTH	SOUTH	EAST	WEST
89°29'44"	90°30'16"	S60°10'00"W	142.28		70.781		123.425
89°26'49"	90°33'11"	N29°16'49"W	195.94	170.906			95.831
57°40'54"	122°19'06"	S86°57'43"E	166.04		-8.800	165.807	
123°22'33"	56°37'27"	S30°20'16"E	105.82		91.329	53.449	
360°00'00"			610.08	170.906	170.910	219.256	219.256

TRAVERSE TABLE ON PROPERTY LINES

INTERIOR ANGLE	DEFLECTION ANGLE	BEARING	DISTANCE	LATITUDE		DEPARTURE	
				NORTH	SOUTH	EAST	WEST
89°26'18"	90°33'42"	S60°10'00"W	8.10		4.030		7.027
90°38'38"	89°21'22"	N29°16'18"W	196.00	170.973			95.834
89°55'04"	89°04'56"	N60°05'04"E	6.18	3.081		5.357	
90°00'00"	90°00'00"	S29°50'00"E	196.00		170.025	97.506	
360°00'00"			406.28	174.054	174.055	102.863	102.861



WE HEREBY CERTIFY THAT THIS ACTUAL SURVEY WAS MADE ON THE GROUND IN ACCORDANCE WITH THE LAND COURT INSTRUCTIONS OF 1959 ON OR BETWEEN MARCH 6, 1962 AND MARCH 7, 1962

DATE-MARCH 28, 1962

HENRY F BRYANT & SON, INC.
By Douglas M. Killam



BROOKLINE PLANNING BOARD DATE Mar 29, 1962
APPROVAL UNDER SUBDIVISION CONTROL LAW NOT REQUIRED.
LOT A DOES NOT CONFORM WITH THE ZONING BY-LAW.

Russell Hastings
CHAIRMAN

HARVARD (PUBLIC) ST.

PLAN OF LAND
IN
BROOKLINE, MASS.

SCALE: 1 INCH = 20 FEET
MARCH 28, 1962

HENRY F. BRYANT & SON, INC.
ENGINEERS BROOKLINE, MASS.

NEW PLAN FOR LAND COURT SUBMITTAL