

RECEIVED

FEB 28 1962

PLANNING BOARD
RANDOLPH

Approval not required under
the Sub-Division Control Act
Randolph Planning Board.
FOR RECORDING PURPOSES ONLY
Manuel T. Caprio
Robert A. Stame
Roger L. Miles

PLAN OF LAND RANDOLPH - MASS.

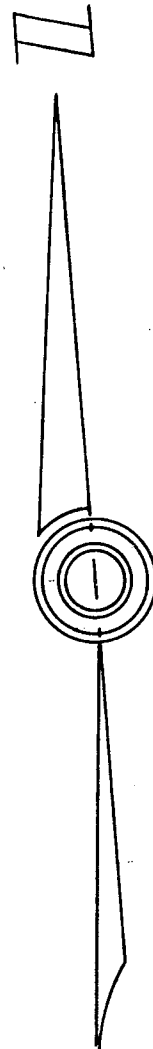
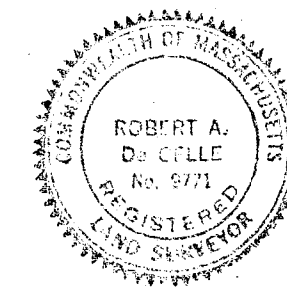
SCALE 1"=40' FEB. 17, 1962

L.W. DECELLE SURVEYORS INC.

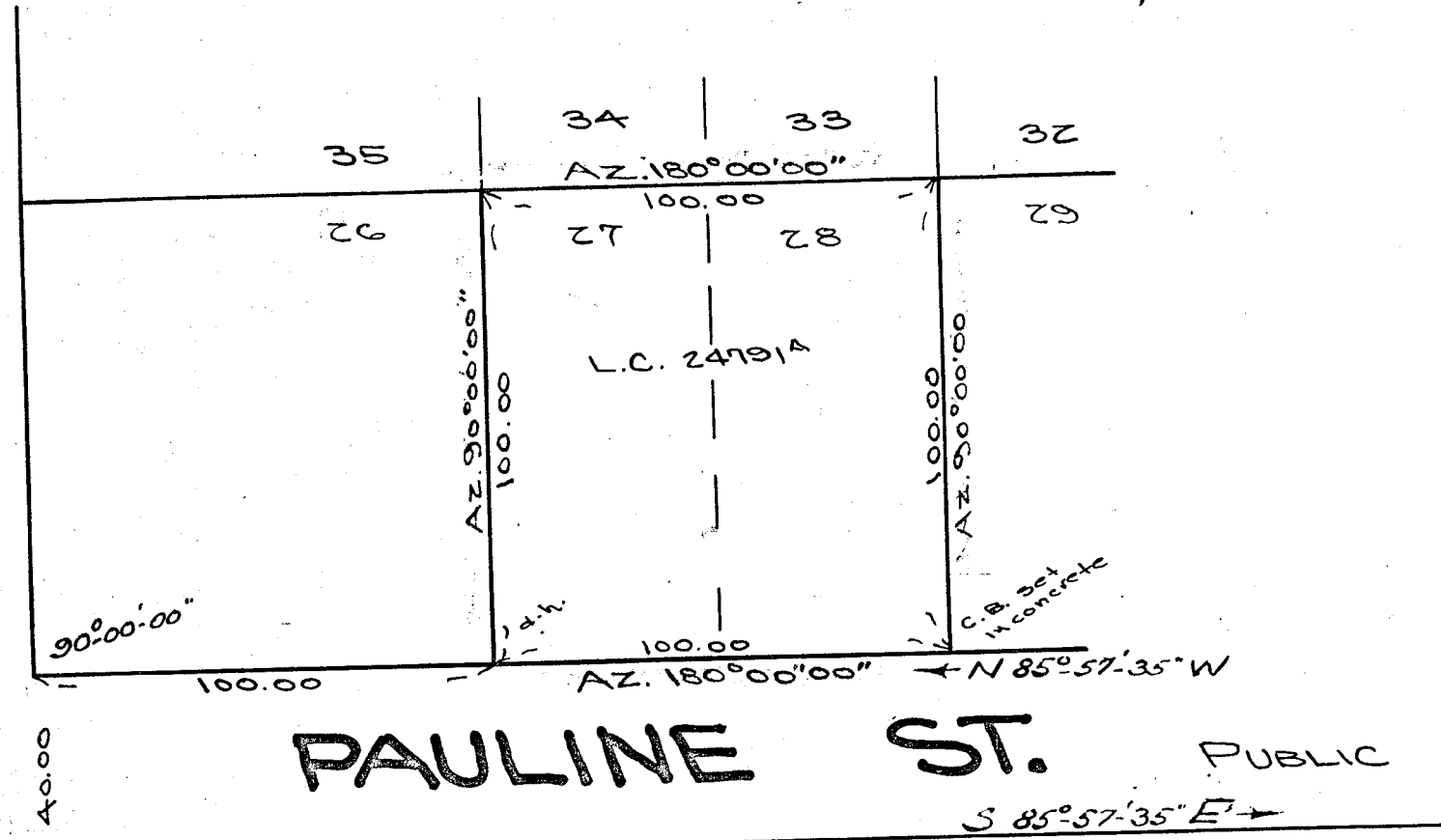
LAND SURVEYORS

285 UNION ST. RANDOLPH

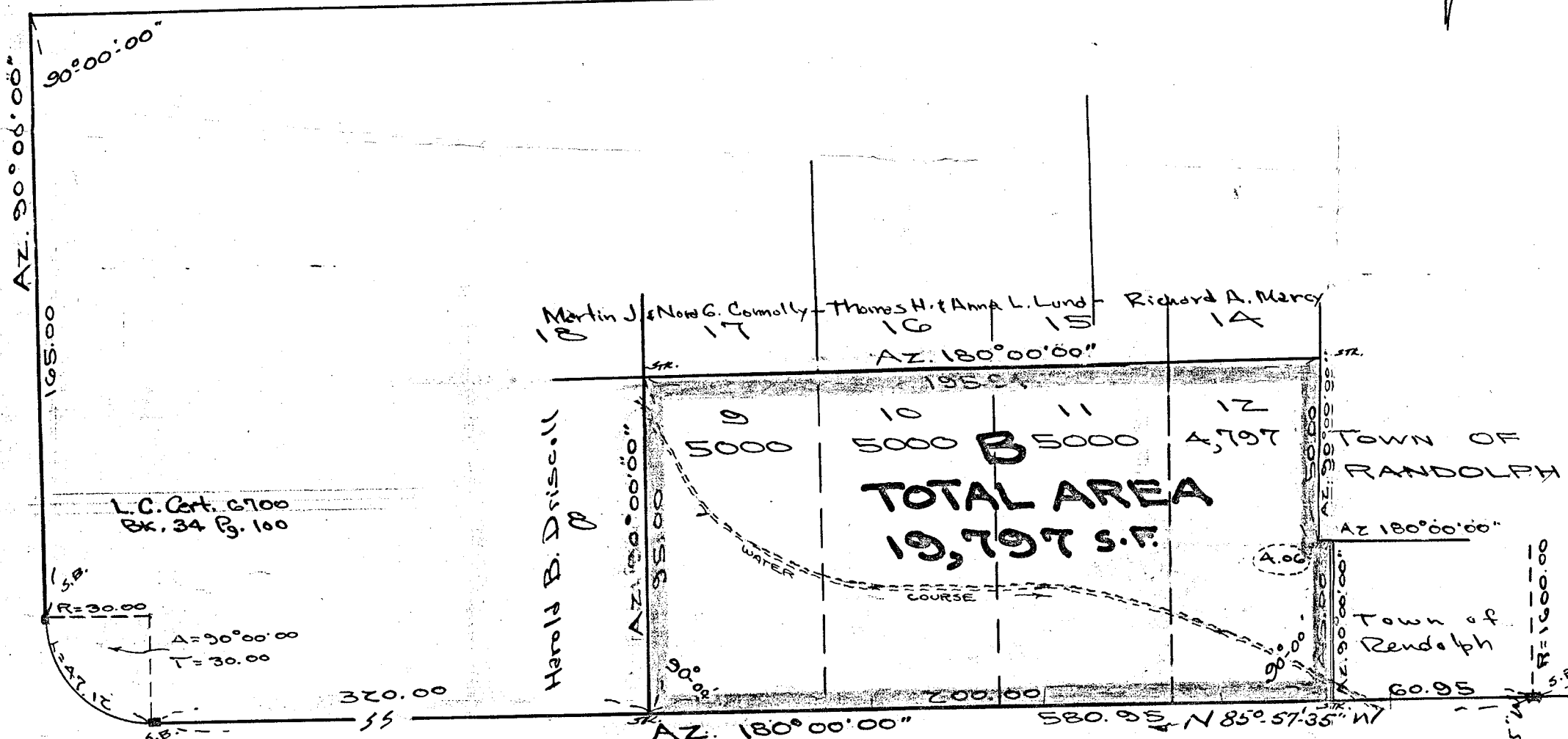
PROPERTY OWNER:
Loretta L. Murphy
Randolph, Mass.
1125 No. Main St.



MITCHELL STREET PUBLIC



PAULINE ST. PUBLIC
S 85° 57' 35\"/>



TOTAL AREA
19,797 S.F.

REED STREET PUBLIC
County Baring

L.C. Cert. 6700
Ex. 34 Pg. 100

L.C. cert. 4978 Ex. 25 - Pg. 178

L.C. Cert. 12503
Ex. 53 Pg. 103

I certify that this actual survey was made on the ground
in accordance with the Land Court Instructions of 1950
between Feb. 14, and Feb. 16, 1962.

Robert A. DeCelle Surveyor

I certify that this plan was made in accordance with the
Land Court Instructions of 1950

Robert A. DeCelle Surveyor

NORTH MAIN ST.
OLD ST.