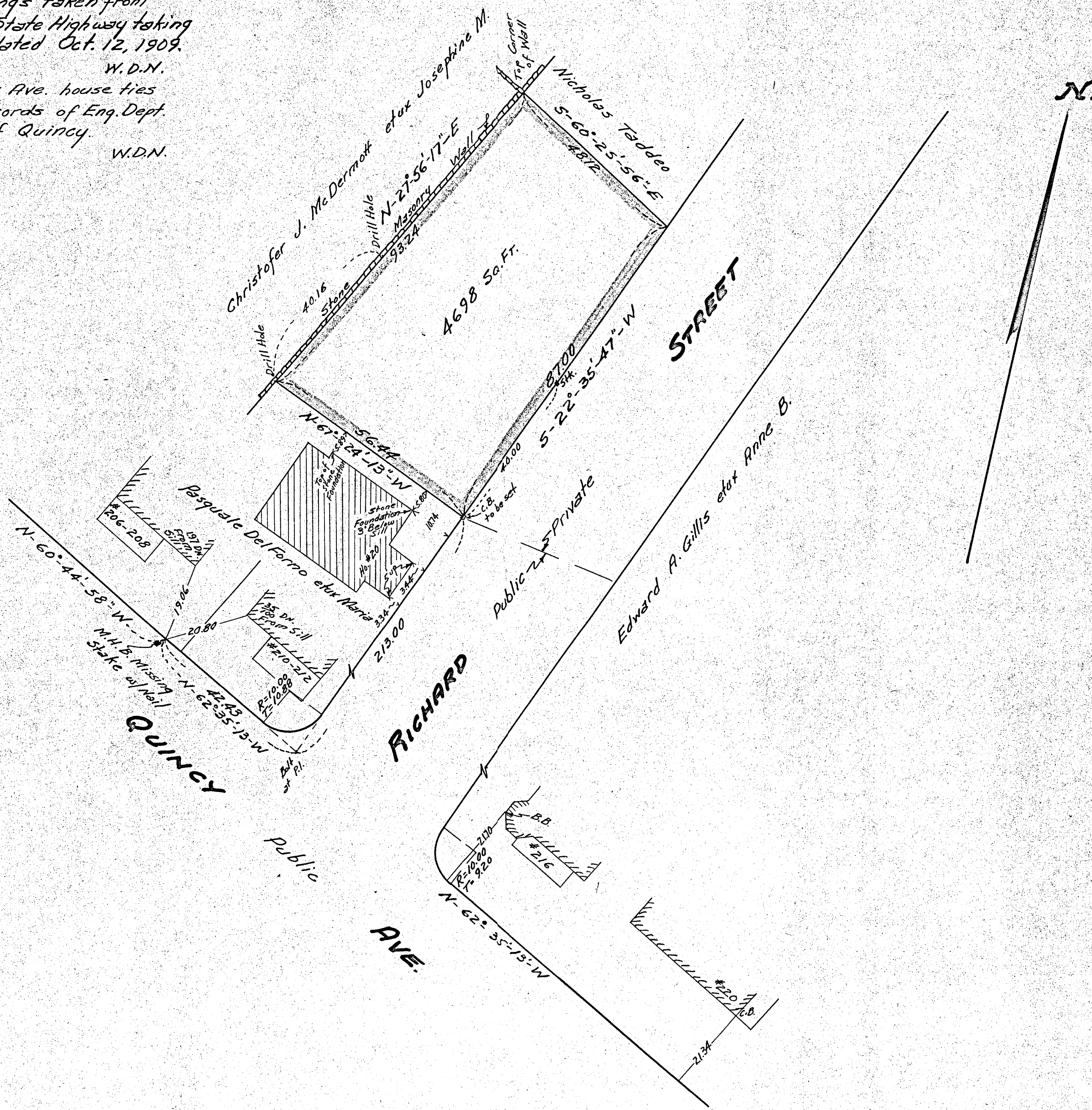


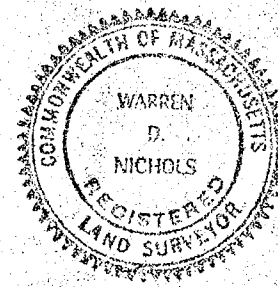
Note: Bearings taken from
 Mass. State Highway taking
 plan dated Oct. 12, 1909.
 W.D.N.
 Quincy Ave. house ties
 are records of Eng. Dept.
 City of Quincy.
 W.D.N.



PLAN OF LAND IN QUINCY
SCALE: 20 FEET TO 1 INCH

WARREN D. NICHOLS - SURVEYOR
 APRIL 14, 1962

Approval under Subdivision
 Control Law not required.
 Date: Apr. 17, 1962
James E. [Signature]
 Director of Planning



BEARING	SINE	COSINE	DIST.	N'	S'	E'	W'
N-67-24-13-W	.92323444	.38423714	56.44	21.686			52.107
N-27-56-17-E	.46851670	.88345464	93.24	82.373		43.684	
S-60-25-56-E	.86977258	.49345280	48.12		23.745	41.853	
S-22-35-47-W	.38423714	.92323444	87.00		80.321		33.429
				104.059	104.066	85.537	85.536

I certify that this actual survey
 was made on the ground in
 accordance with Land Court
 Instructions of 1959.

Date: March 31, 1962

Warren D. Nichols
 295-ville St., Quincy, Mass.