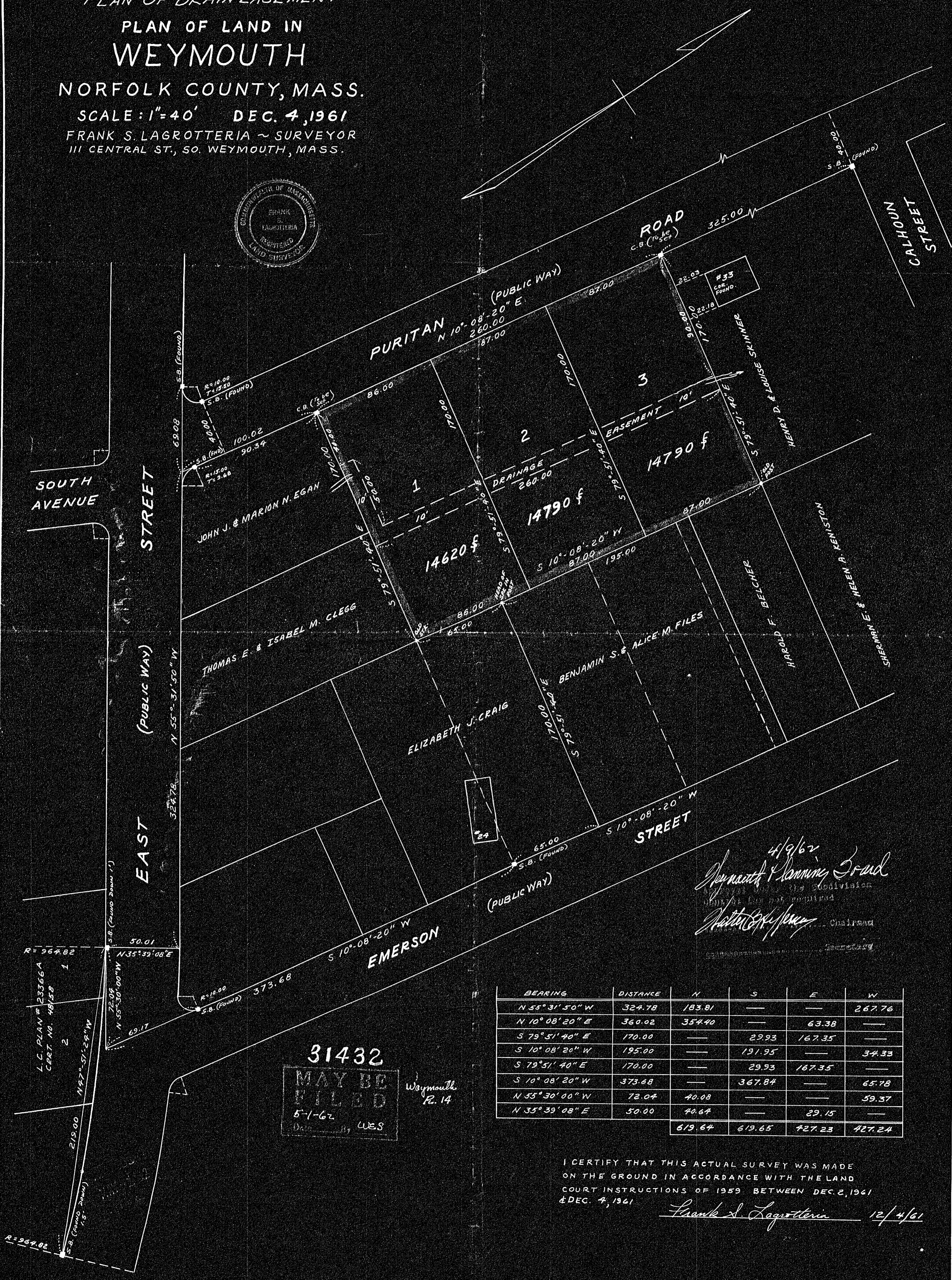


PLAN OF DRAIN EASEMENT
 PLAN OF LAND IN
 WEYMOUTH
 NORFOLK COUNTY, MASS.
 SCALE: 1"=40' DEC. 4, 1961
 FRANK S. LAGROTTERIA ~ SURVEYOR
 111 CENTRAL ST., SO. WEYMOUTH, MASS.



4/9/62
 Weymouth Planning Board
 Chairman

BEARING	DISTANCE	N	S	E	W
N 55° 31' 50" W	324.78	183.81	—	—	267.76
N 10° 08' 20" E	360.02	354.40	—	63.38	—
S 79° 51' 40" E	170.00	—	29.93	167.35	—
S 10° 08' 20" W	195.00	—	191.95	—	34.33
S 79° 51' 40" E	170.00	—	29.93	167.35	—
S 10° 08' 20" W	373.68	—	367.84	—	65.78
N 55° 30' 00" W	72.04	40.08	—	—	59.37
N 35° 39' 08" E	50.00	40.64	—	29.15	—
		619.64	619.65	427.23	427.24

31432
 MAY BE FILED
 5-1-62
 WES

Weymouth
 R. 14

I CERTIFY THAT THIS ACTUAL SURVEY WAS MADE ON THE GROUND IN ACCORDANCE WITH THE LAND COURT INSTRUCTIONS OF 1959 BETWEEN DEC. 2, 1961 & DEC. 4, 1961
 Frank S. Lagrotteria 12/4/61