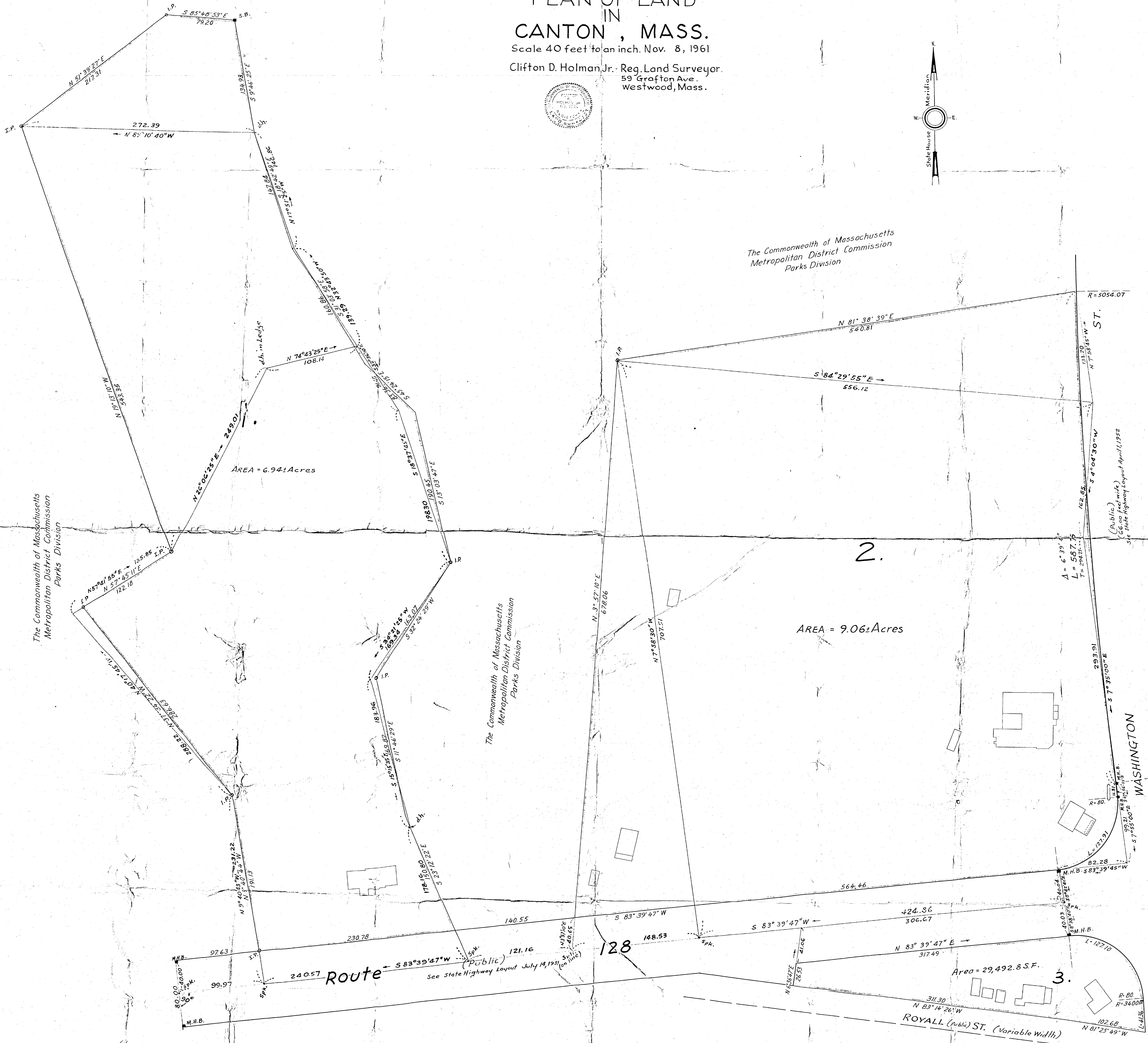
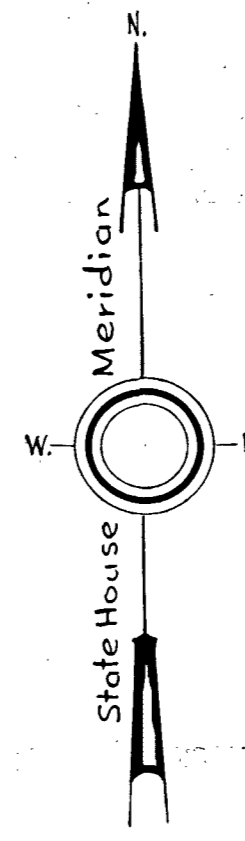
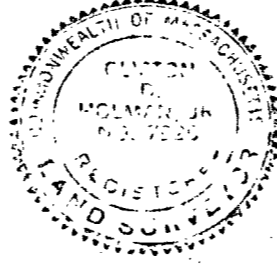


PLAN OF LAND IN CANTON, MASS.

Scale 40 feet to an inch. Nov. 8, 1961

Clifton D. Holman Jr. Reg. Land Surveyor.
59 Grafton Ave.
Westwood, Mass.



I certify that this actual survey was made on the ground
in accordance with the Land Court Instructions of 1959
between January 6, 1961 and November 8, 1961.
Clifton D. Holman Jr.
59 Grafton Ave. - Westwood, Mass.

Approval under the Subdivision Control Law
is not required.

CANTON PLANNING BOARD

By _____

Date: _____