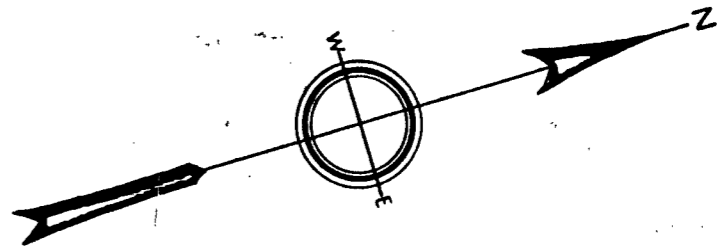


STREET  
 BEACH  
 Norfolk County Layout, Oct. 20, 1959.  
 (553.27)  
 (550.00)  
 (N 2°-15'-23"W →)  
 (S 3°-58'-10"W)



I certify that this actual survey was made on the ground in accordance with the Land Court Instructions of 1959 between Nov. 18, 1961, and Jan. 15, 1962.  
 Date February 10, 1962  
 John P. Lienesch  
 Registered Land Surveyor

24.1812 Acres

OLD COLONY ROAD  
 Laid out by Norfolk County Commissioners before 1857 but not built

Mary M. Bonfatti

Benj. F. Morrill

Town of Foxborough (Water Dept)

Traverse data shown in parentheses.

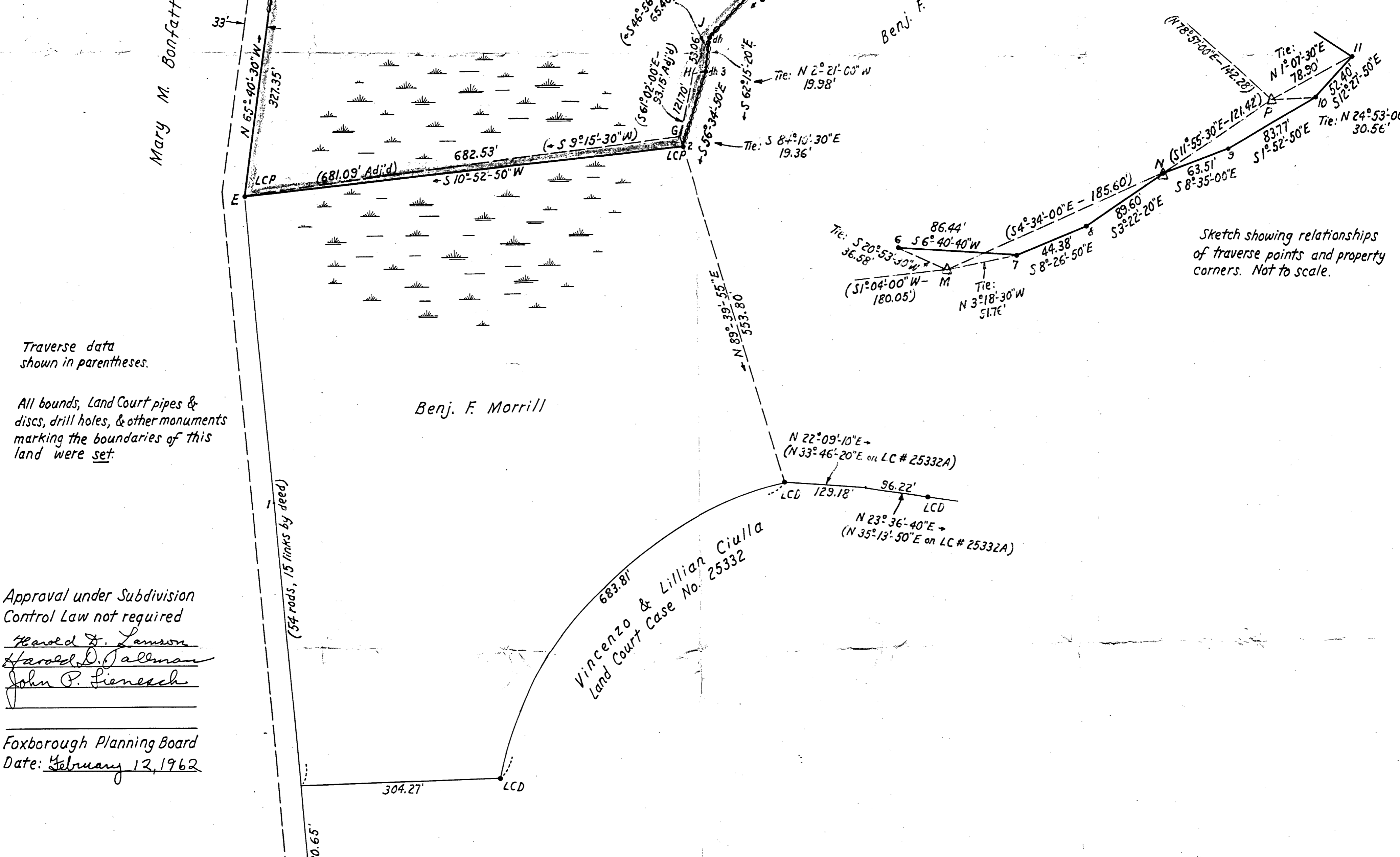
All bounds, Land Court pipes & discs, drill holes, & other monuments marking the boundaries of this land were set.

Approval under Subdivision Control Law not required  
 Harold F. Lamson  
 Harold D. Tallman  
 John P. Lienesch

Foxborough Planning Board  
 Date: February 12, 1962

Vincenzo & Lillian Ciulla  
 Land Court Case No. 25332

MECHANIC STREET  
 Norfolk County Layout Aug. 9, 1927  
 OAK ST.



Sketch showing relationships of traverse points and property corners. Not to scale.

MAP OF LAND  
 IN  
 FOXBOROUGH, MASSACHUSETTS  
 PROPERTY OF WILFRED E. BOOTH  
 FOXBORO, MASS.  
 JOHN P. LIENESCH, SURVEYOR,  
 FOXBORO, MASS.  
 SCALE 1" = 100' FEBRUARY 1962

