

LAND COURT CASE # 24579

C.B. FOUND

CIRCUIT (PUBLIC) ROAD

# PLAN OF LAND IN WEYMOUTH

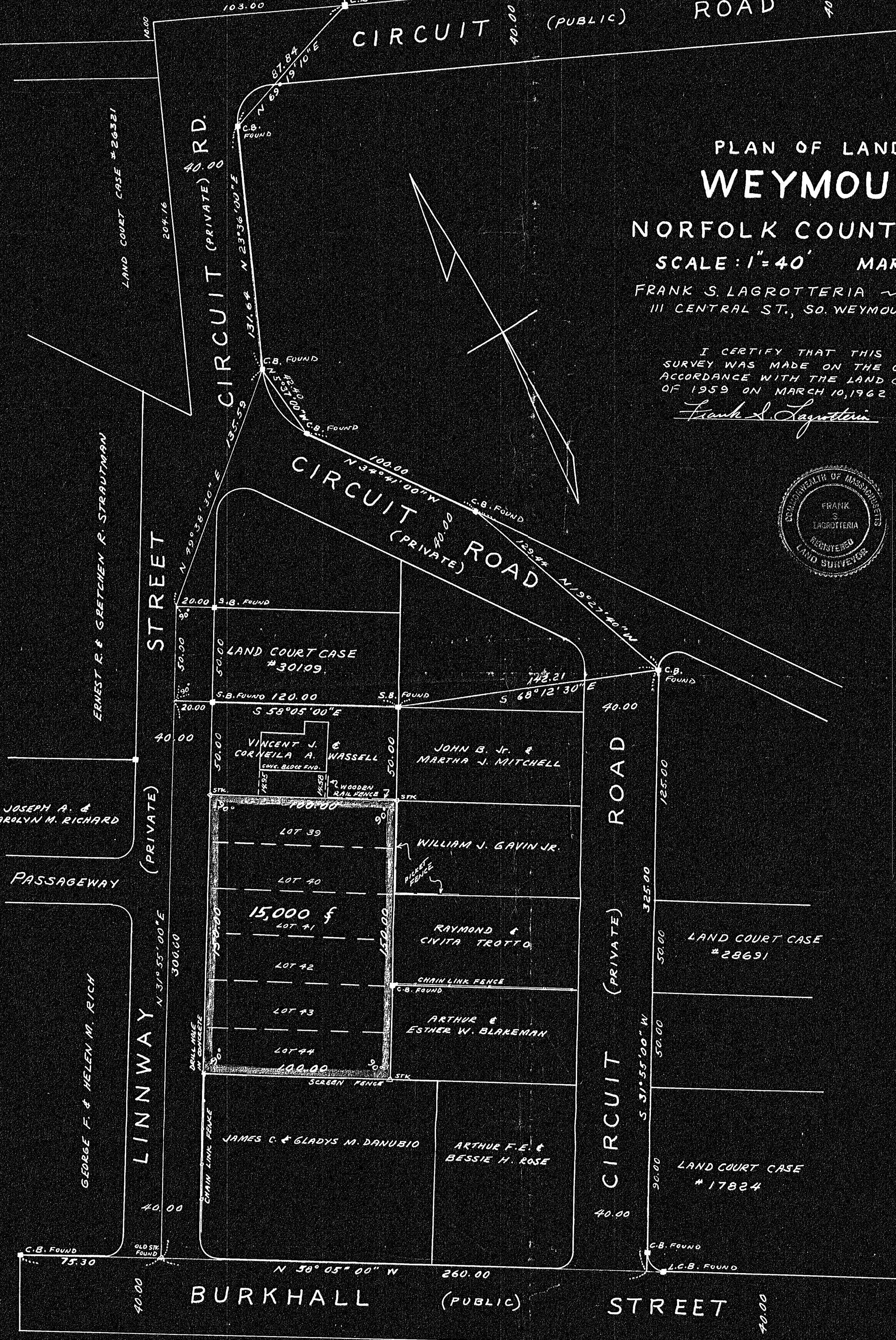
NORFOLK COUNTY, MASS

SCALE: 1" = 40' MARCH 12, 1962

FRANK S. LAGROTTERIA ~ SURVEYOR  
111 CENTRAL ST., SO. WEYMOUTH, MASS.

I CERTIFY THAT THIS ACTUAL SURVEY WAS MADE ON THE GROUND IN ACCORDANCE WITH THE LAND COURT INSTRUCTIONS OF 1959 ON MARCH 10, 1962

*Frank S. Lagrotteria* 3/12/62



BEARING	DISTANCE	N	S	E	W
S 31°55'00" W	325.00	—	275.87	—	171.83
N 58°05'00" W	260.00	137.46	—	—	320.69
N 31°55'00" E	350.00	297.09	—	185.04	—
N 49°58'30" E	135.59	87.80	—	103.32	—
S 5°37'00" E	42.40	—	42.20	4.15	—
S 34°41'00" E	100.00	—	82.23	56.90	—
S 19°27'40" E	129.44	—	122.04	43.12	—
		522.35	522.34	392.53	392.52

31336  
MAY 14 1962  
FILED  
3-14-62  
Date By LWS

Weymouth  
R. 42  
MAR 14 1962

*Weymouth Planning Board*  
Approval under the Subdivision Control Law not required  
*Weymouth Planning Board*  
Secretary