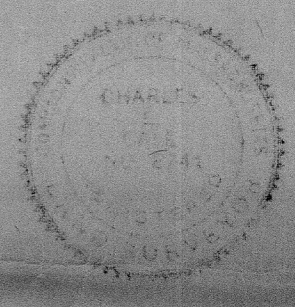
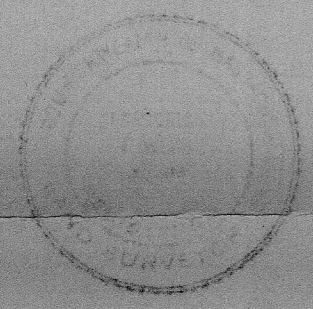


PLAN OF LAND IN HOLBROOK, NORFOLK COUNTY, MASS.

SCALE: 1" = 40'

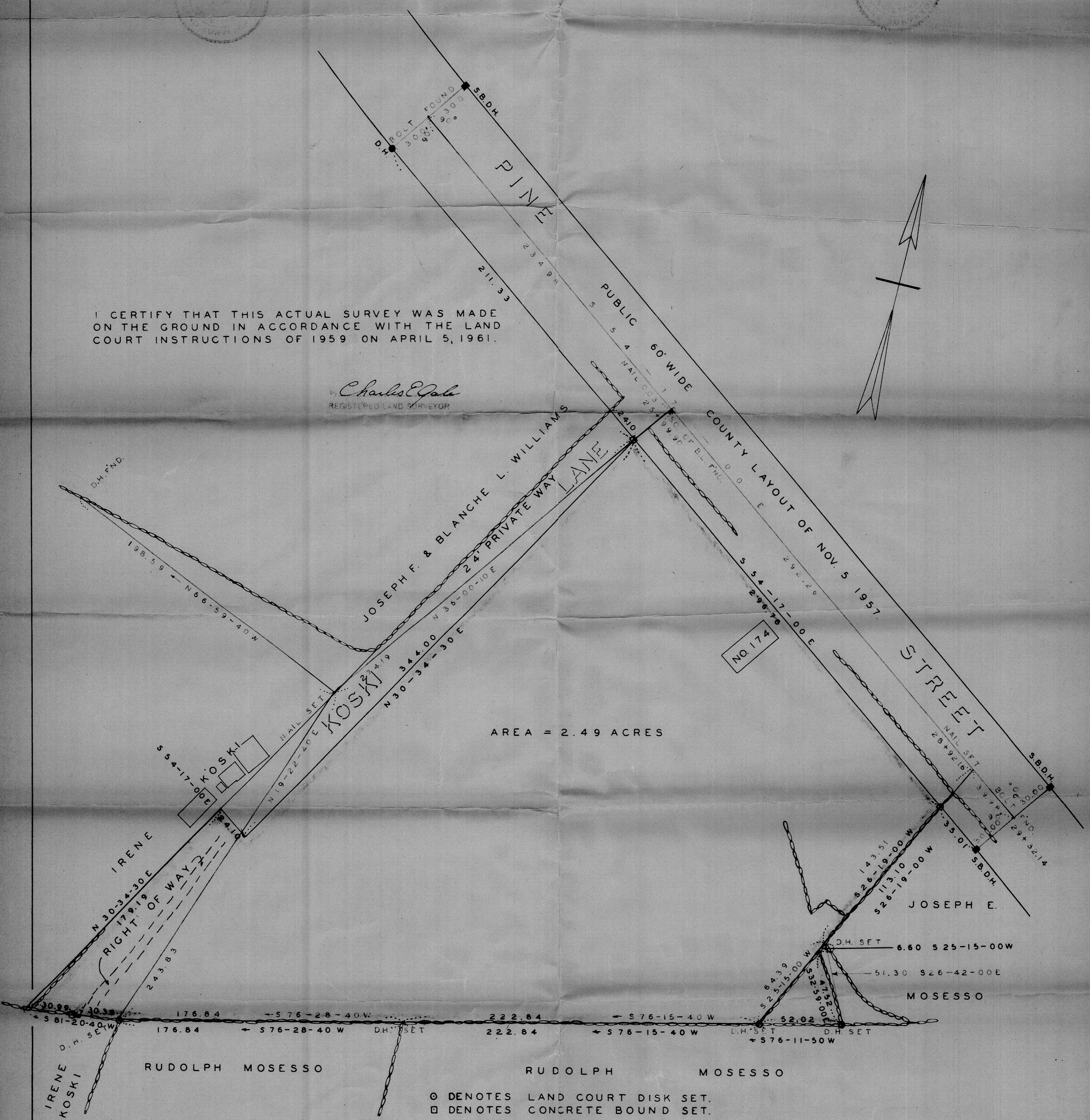
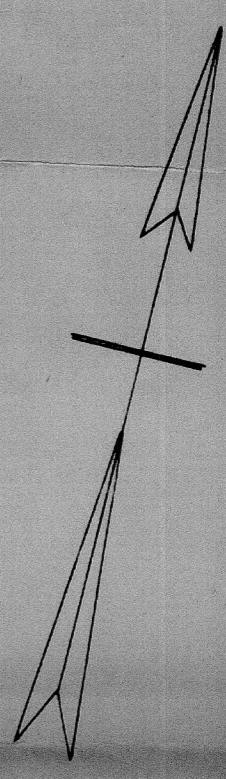
MAY 11, 1961
REVISED JULY 25, 1961.

THE SCHUYLER CLAPP COMPANY
BRAintree, MASS.



I CERTIFY THAT THIS ACTUAL SURVEY WAS MADE ON THE GROUND IN ACCORDANCE WITH THE LAND COURT INSTRUCTIONS OF 1959 ON APRIL 5, 1961.

Charles E. Gale
REGISTERED LAND SURVEYOR



AREA = 2.49 ACRES

○ DENOTES LAND COURT DISK SET.
□ DENOTES CONCRETE BOUND SET.