

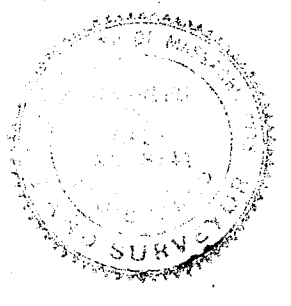
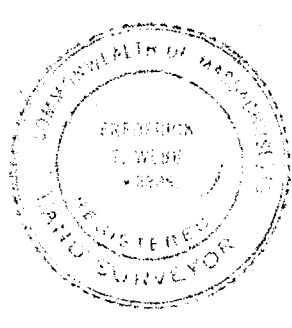
31227A

# PLAN OF LAND IN WEYMOUTH, NORFOLK CO, MASS.

SCALE: 1" = 40'

NOV. 7, 1961

THE SCHUYLER CLAPP COMPANY  
BRAINTREE, MASS.

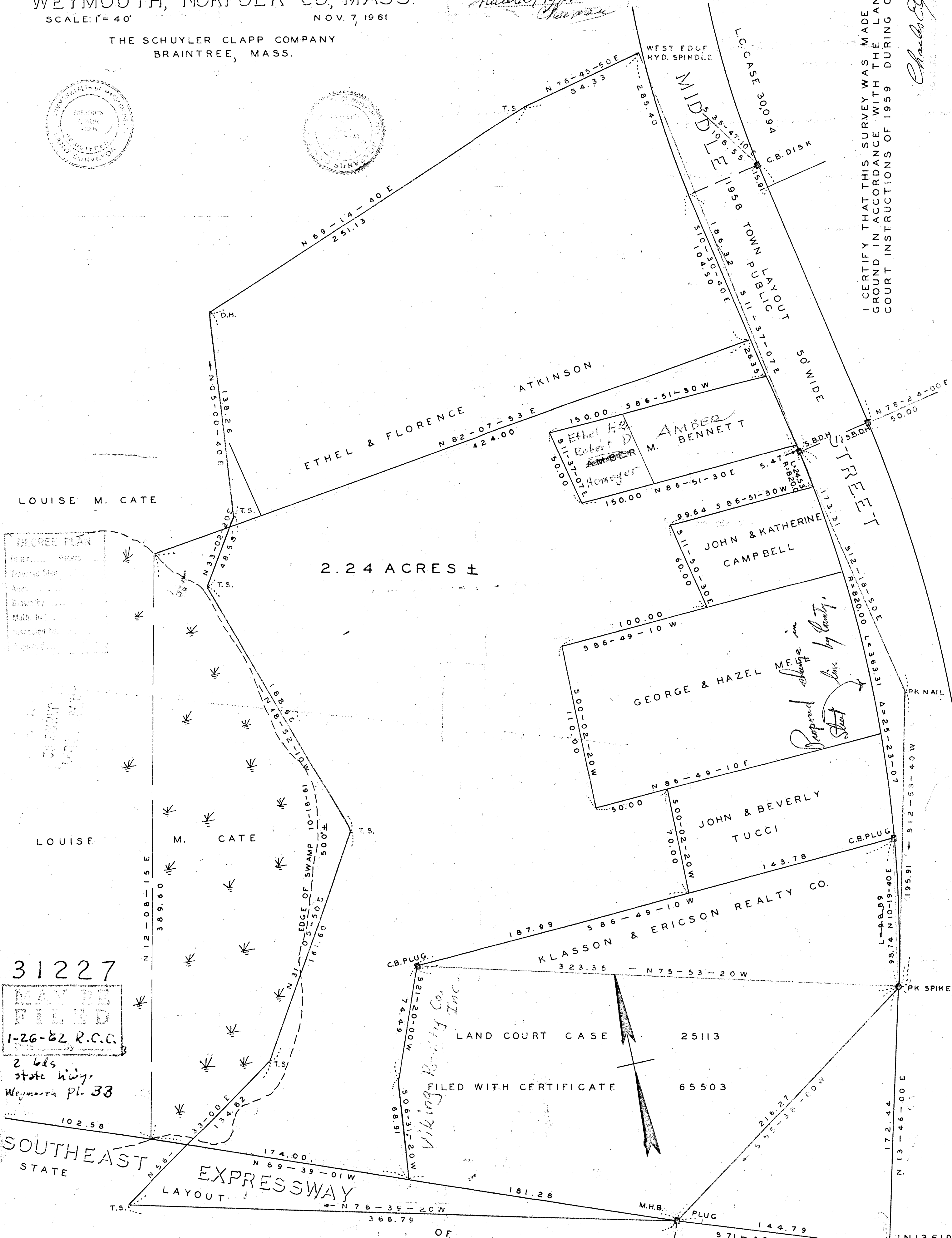


11/14/61  
*Charles E. DeLoe*  
*Surveyor*

I CERTIFY THAT THIS SURVEY WAS MADE ON THE GROUND IN ACCORDANCE WITH THE LAND COURT INSTRUCTIONS OF 1959 DURING OCT, 1961.

*Charles E. DeLoe*

JN13619



2.24 ACRES ±

DEED PLAN  
Drawn by  
Math. by  
Reviewed by

31227  
MAY BE FILED  
1-26-62 R.C.C.  
2 lbs  
state highway  
Weymouth pl-33

*Viking Realty Co.*  
*Inc.*

*Proposed change in  
Street line by County.*

LAND COURT CASE 25113  
FILED WITH CERTIFICATE 65503

SOUTHEAST STATE EXPRESSWAY LAYOUT

OF 1957

JN13619

31227A