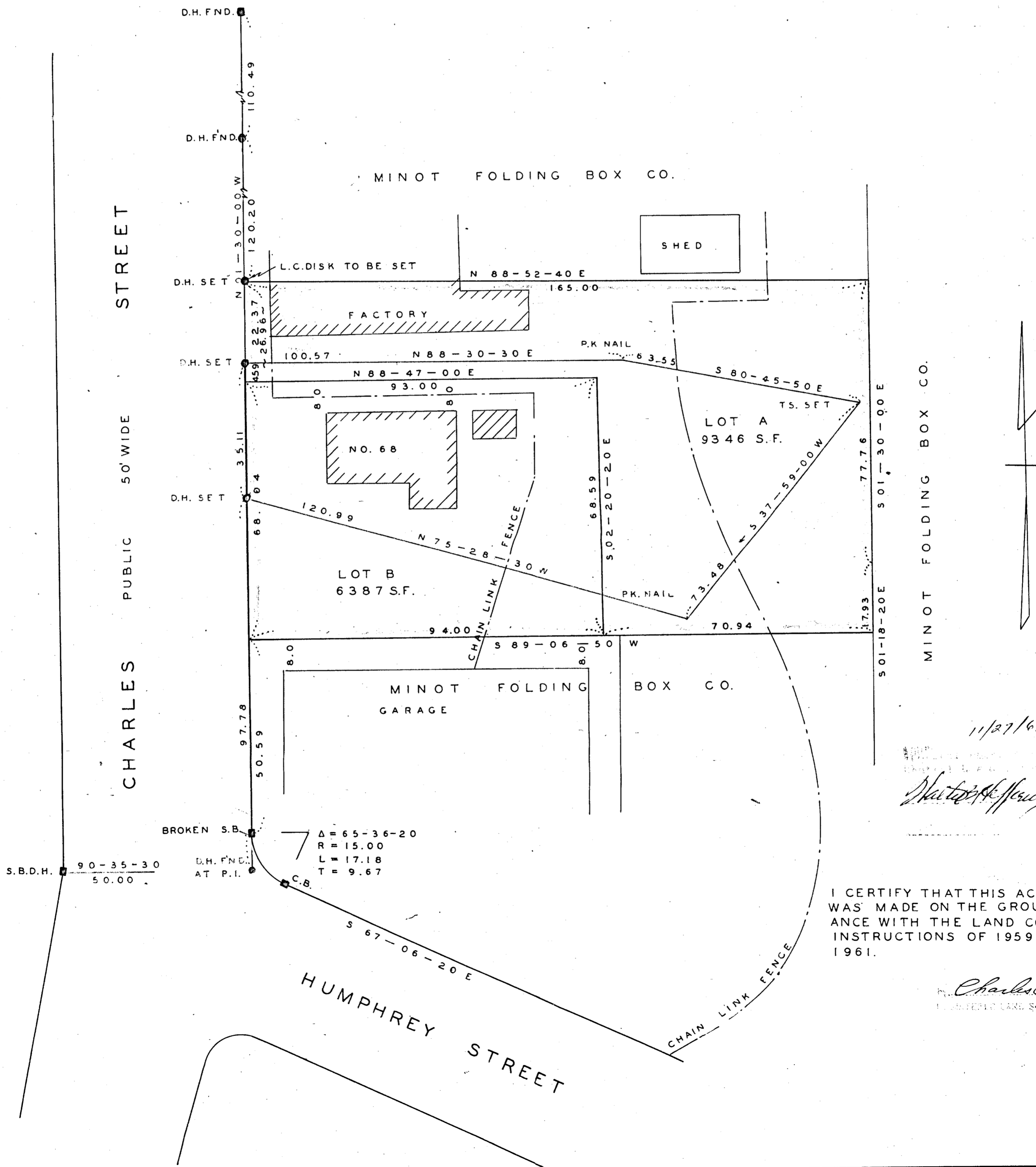
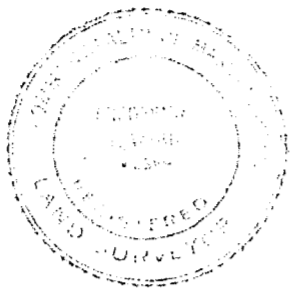


SUBDIVISION PLAN OF LAND IN WEYMOUTH, NORFOLK CO., MASS.

SCALE: 1" = 20'

NOV. 14, 1961

THE SCHUYLER CLAPP COMPANY
BRAintree, MASS.



11/27/61
Charles Clapp
 Licensed Land Surveyor

I CERTIFY THAT THIS ACTUAL SURVEY WAS MADE ON THE GROUND IN ACCORDANCE WITH THE LAND COURT INSTRUCTIONS OF 1959 ON OCT. 24, 1961.

Charles Clapp
 Licensed Land Surveyor