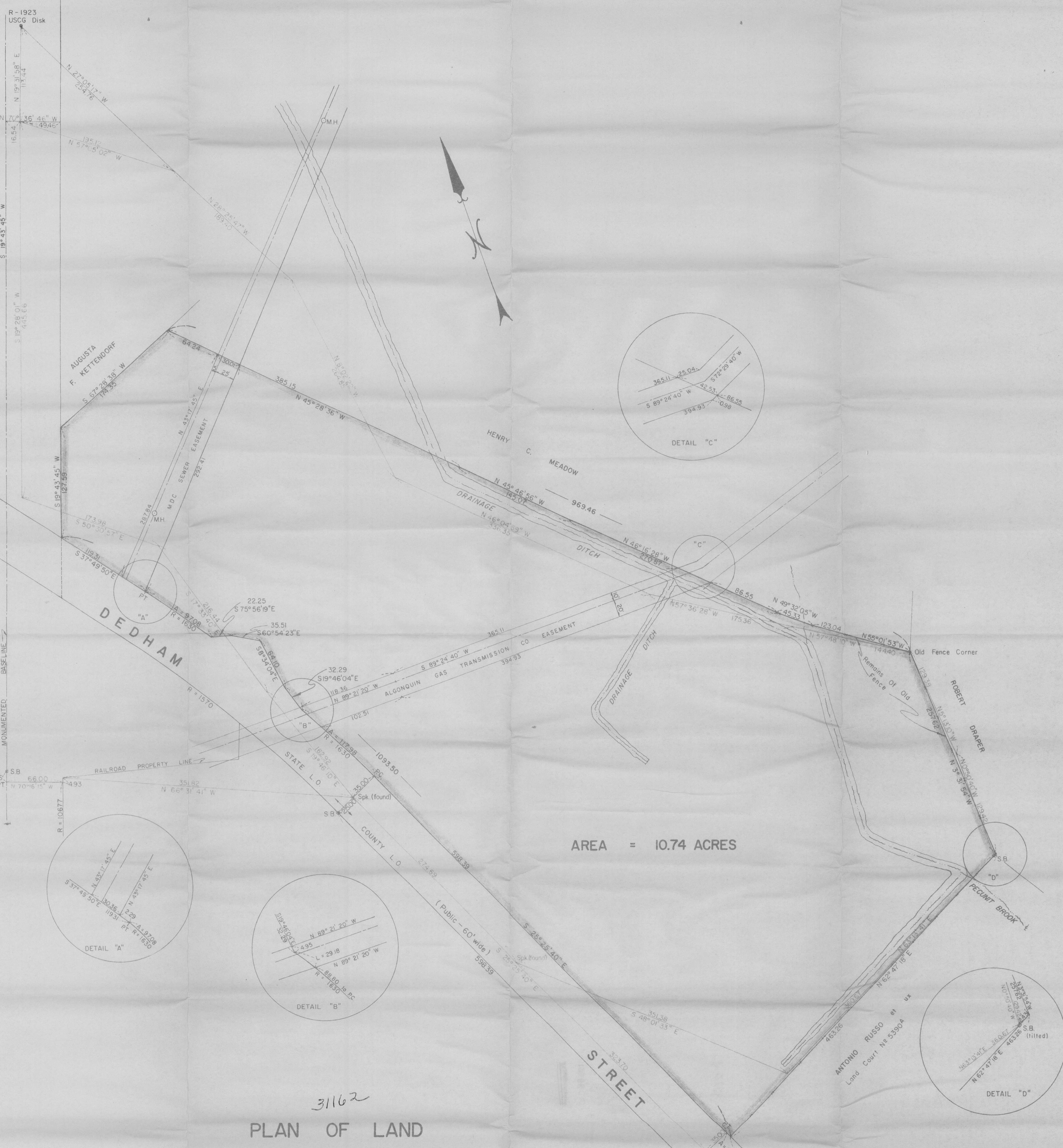
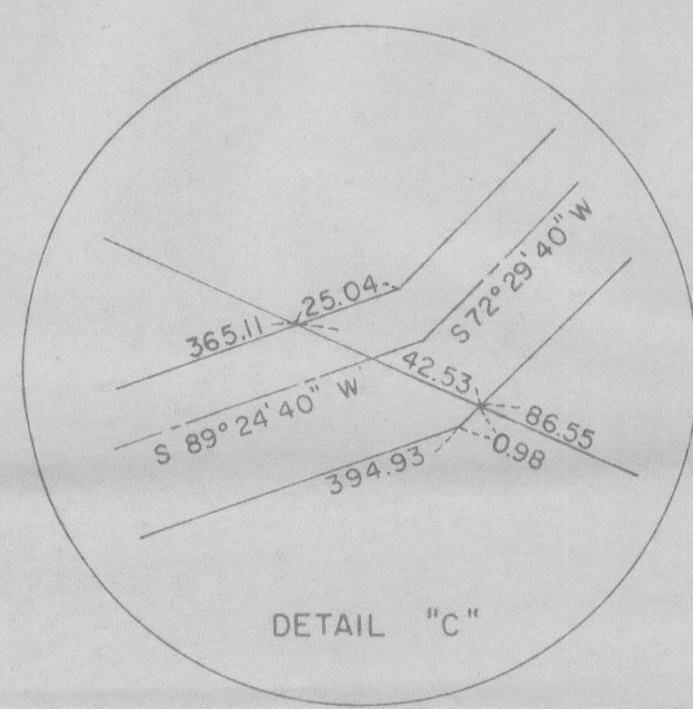
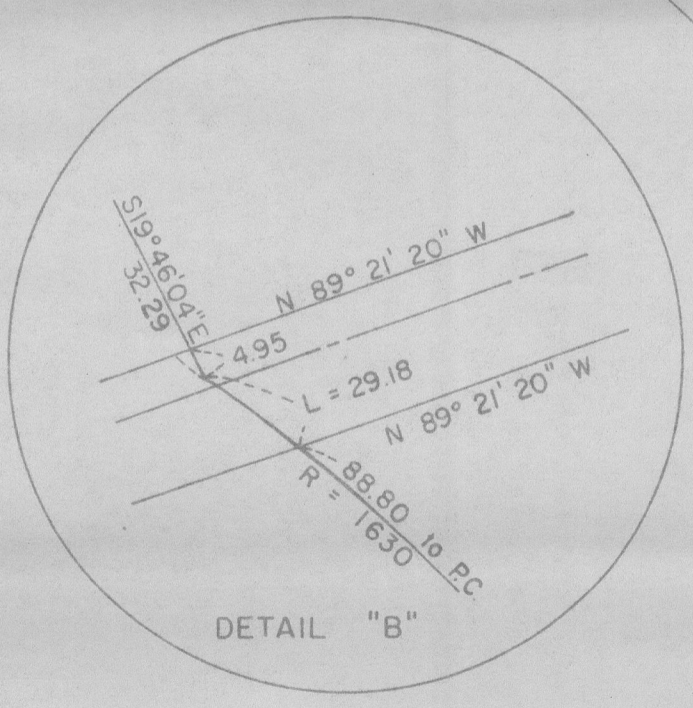
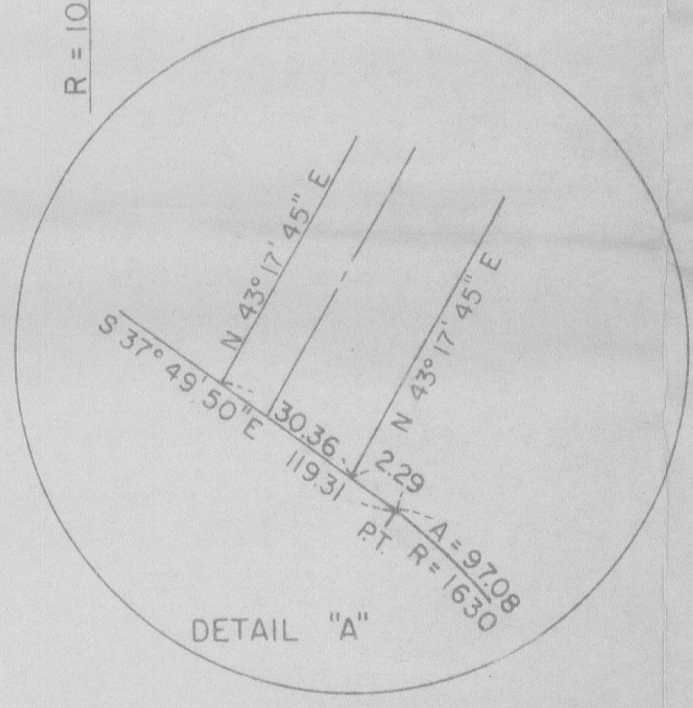


N.Y., N.H., & H. R.R. CO.



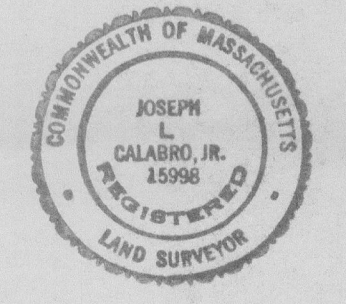
AREA = 10.74 ACRES



# PLAN OF LAND CANTON, MASS

SCALE = 1" = 50' DEC. 20, 1961  
HARRY R. FELDMAN, INC. SURVEYORS  
27 SCHOOL STREET BOSTON, MASS.

I certify that this actual survey was made on the ground in accordance with the Land Court Instructions of 1959 on Dec. 4 and 5, 1961



*Joseph L. Calabro Jr.*

Approval under the Subdivision Control Law not required  
Canton Planning Board  
By *Eugene J. Gallagher*  
John Council  
Authorized Agent  
Date: *Dec 21, 1961*

31162