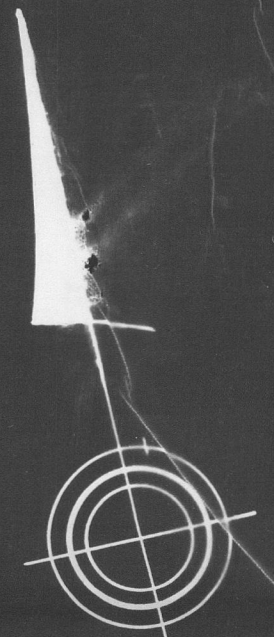


PLAN OF LAND IN  
WEYMOUTH, NORFOLK CO., MASS.

SCALE: 1" = 40'      SEPT 5, 1961

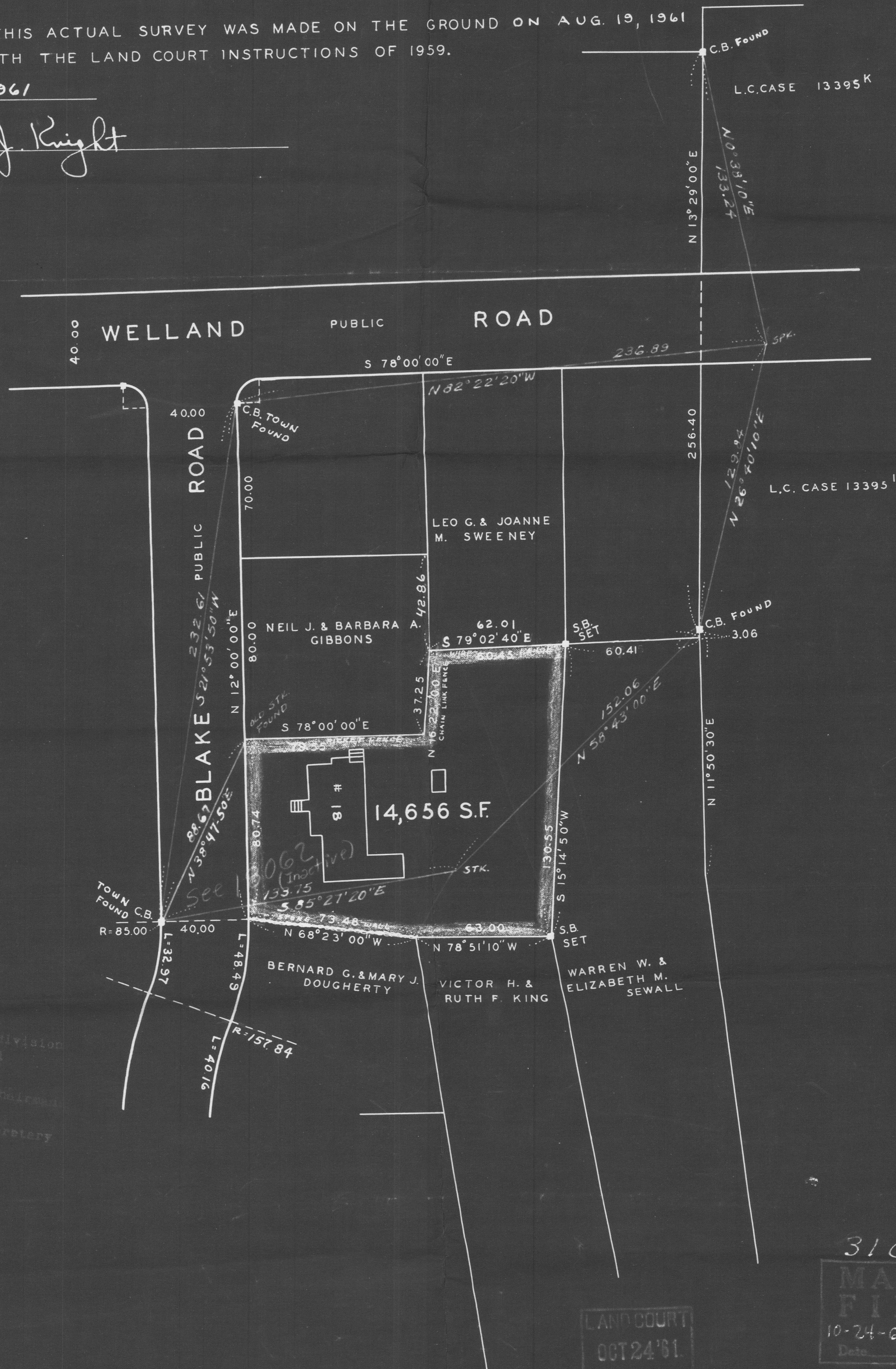
PAUL J. KNIGHT, REG. SURVEYOR  
56 GRIFFIN TERRACE  
WEYMOUTH, MASS.



I CERTIFY THAT THIS ACTUAL SURVEY WAS MADE ON THE GROUND ON AUG. 19, 1961  
IN ACCORDANCE WITH THE LAND COURT INSTRUCTIONS OF 1959.

DATE: Sept 5, 1961

*Paul J. Knight*



approval under the Subdivision  
Control Law not required

*William P. White*  
Secretary  
9/11/61

LAND COURT  
OCT 24 '61  
FILED

31024  
MAY BE  
FILED  
10-24-61 R.C.C.  
Date By  
Weym. Pl. 24