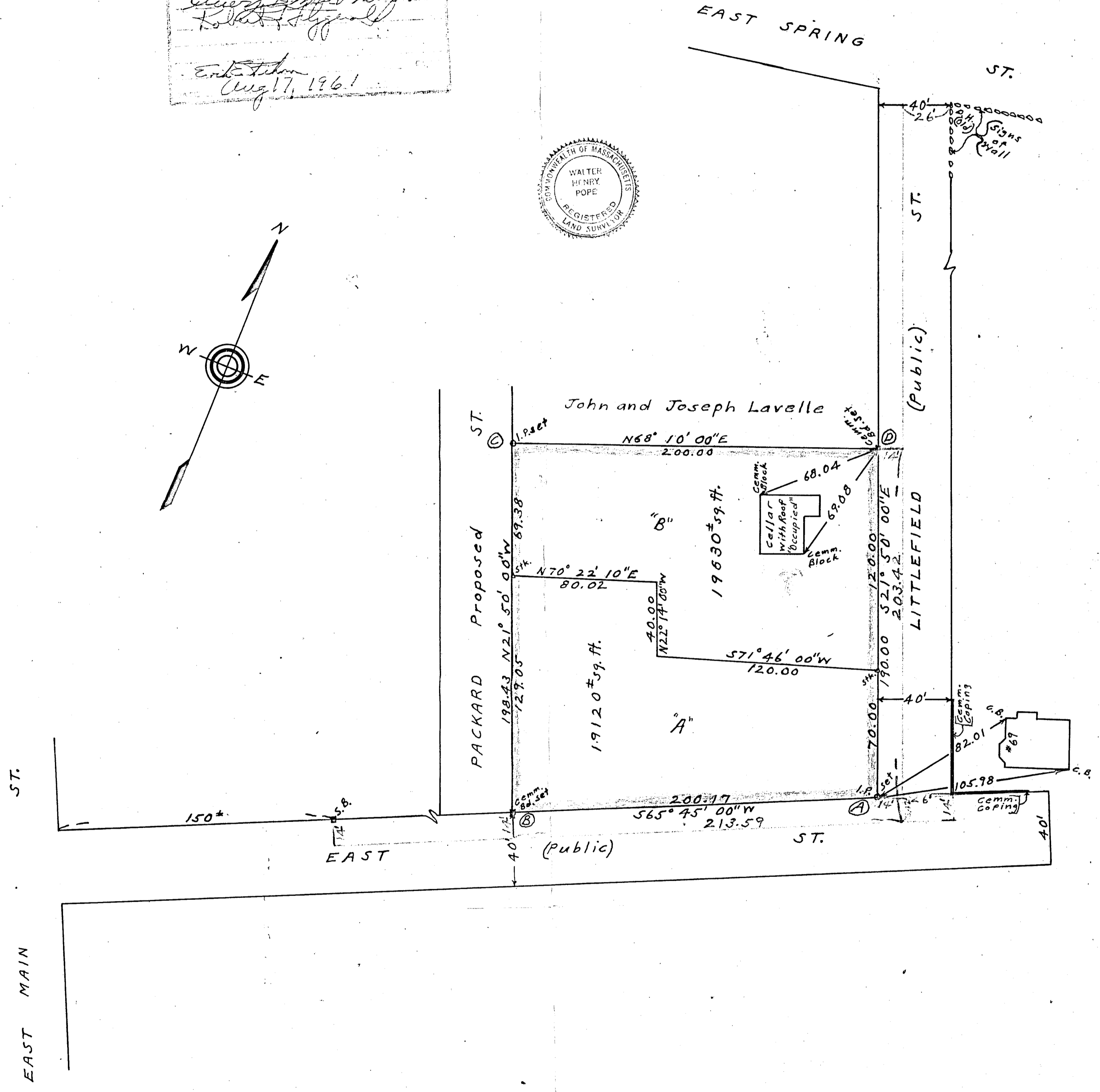
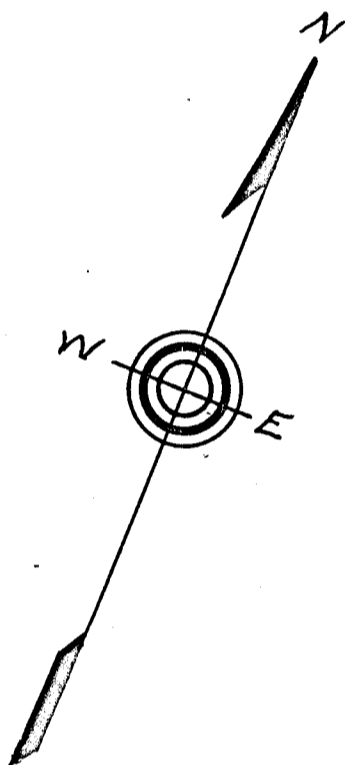
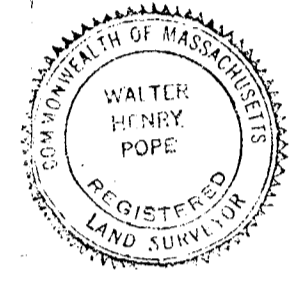


PLAN OF LAND IN AVON
 OWNED BY
 JOSEPH AND ANNA A. TUKIS
 Scale: lin. = 40 ft. July 20, 1961
 W. H. Pope Surveyor
 123 School St. Avon, Mass.

Sta.	Dist.	Bear.	Lat.		Dept.	
			N	S	E	W
A	200.17	S65°45'00"W		82.214		182.51
B	198.43	N21°50'00"W	184.20			73.798
C	200.00	N68°10'00"E	74.38		185.65	
D	190.00	S21°50'00"E	176.37	70.662		
			258.58	258.584	256.312	256.308

AVON PLANNING BOARD
 APPROVED UNDER SUBORDINATE ZONING LAW
 RESOLUTION
Approved by Planning Board
Robert Fitzgerald
 Expiration
 Aug 17, 1961



I certify that this plan was
 made in accordance with the
 Land Court Instructions of 1959.
 Walter H. Pope Surveyor