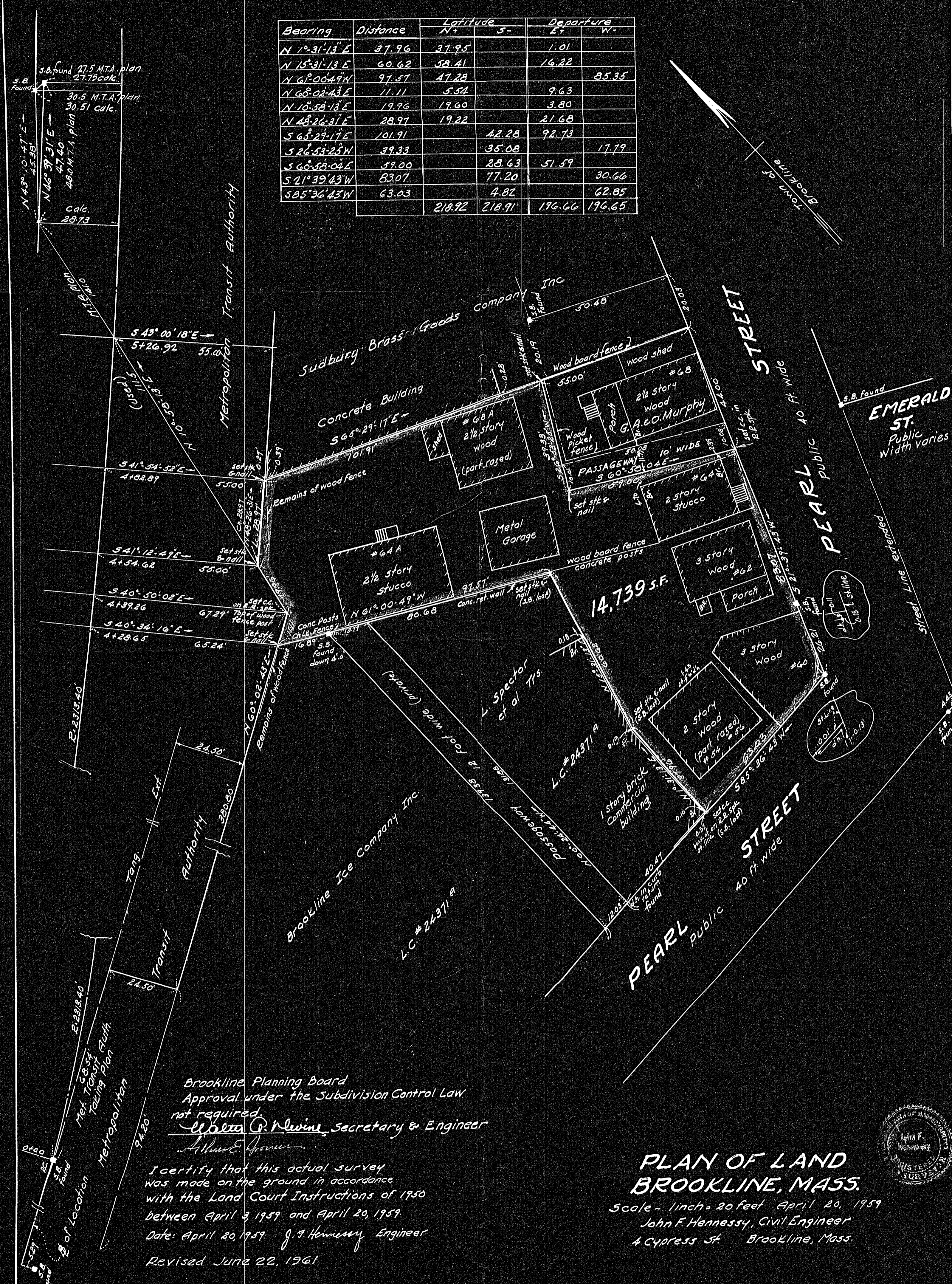


| Bearing | Distance | Latitude | | Departure | |
|-----------------|----------|----------|--------|-----------|--------|
| | | N+ | S- | E+ | W- |
| N 1° 31' 13" E | 37.96 | 37.95 | | 1.01 | |
| N 15° 31' 13" E | 60.62 | 58.41 | | 16.22 | |
| N 61° 00' 49" W | 97.57 | | 47.28 | | 85.35 |
| N 68° 02' 43" E | 11.11 | 5.54 | | 9.63 | |
| N 10° 58' 13" E | 19.96 | 19.60 | | 3.80 | |
| N 48° 26' 31" E | 28.97 | 19.22 | | 21.68 | |
| S 65° 29' 17" E | 101.91 | | 42.28 | | 92.73 |
| S 26° 53' 25" W | 39.33 | | 35.08 | | 17.19 |
| S 60° 58' 04" E | 57.00 | | 28.63 | | 51.59 |
| S 21° 39' 43" W | 83.07 | | 77.20 | | 30.66 |
| S 85° 36' 43" W | 63.03 | | 4.82 | | 62.85 |
| | | 218.92 | 218.91 | 196.66 | 196.65 |



Brookline Planning Board
Approval under the Subdivision Control Law
not required.
Alfred A. Malone, Secretary & Engineer
John F. Hennessy

I certify that this actual survey
was made on the ground in accordance
with the Land Court Instructions of 1950
between April 3, 1959 and April 20, 1959.
Date: April 20, 1959 *J. F. Hennessy*, Engineer
Revised June 22, 1961

PLAN OF LAND BROOKLINE, MASS.

Scale - 1 inch = 20 feet April 20, 1959
John F. Hennessy, Civil Engineer
4 Cypress St. Brookline, Mass.

