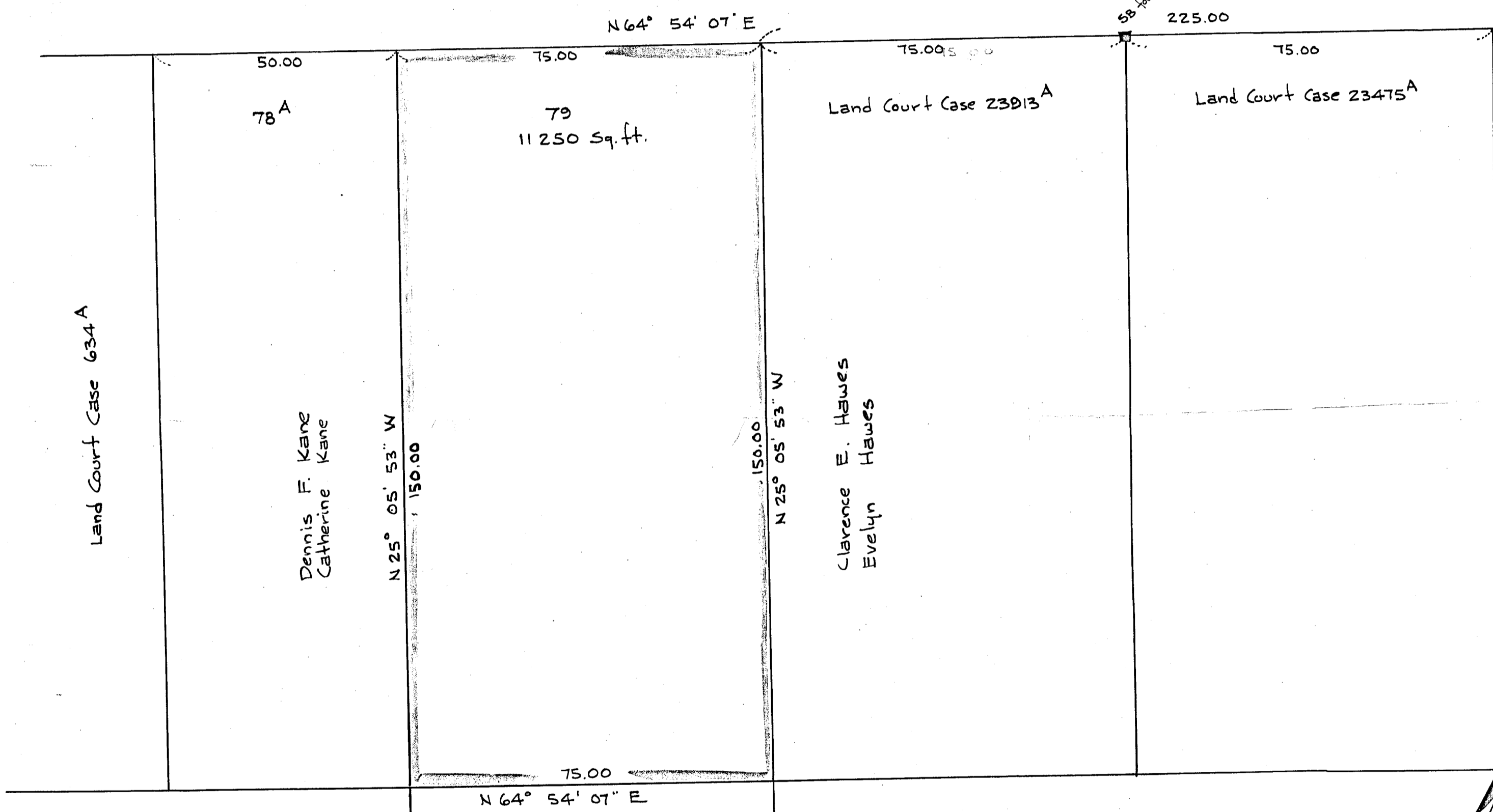


BLOSSOM STREET (Public)

WHITING

AVE. (Private)



Land Court Case 634 A

78^A

Dennis F. Kane
Catherine Kane

N 25° 05' 53" W
150.00

79
11 250 Sq. ft.

N 25° 05' 53" W
150.00

Clarence E. Hawes
Evelyn Hawes

Land Court Case 23313 A

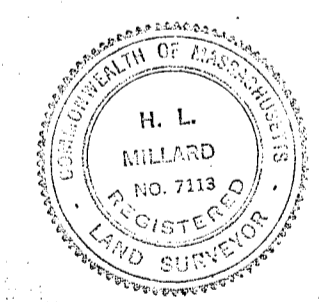
Land Court Case 23475 A

75.00
N 64° 54' 07" E

← G Lawrence J. Winston → 65

I certify that this actual survey was made on the ground in accordance with the Land Court Instructions of 1959 on March 27, 1961

Howard L. Millard
Registered Land Surveyor



Plan of Land in DEDHAM, MASS.

Scale: 1 inch = 20 feet

Pilling Engineering Company, Inc.
26 Norfolk St. Dedham, Mass.
March 28, 1961

Approval under Subdivision Control Law not required

DEDHAM PLANNING BOARD