

PLAN OF LAND IN  
WEYMOUTH-NORFOLK CO. MASS.

SCALE 1"=40' MAR. 18, 1961

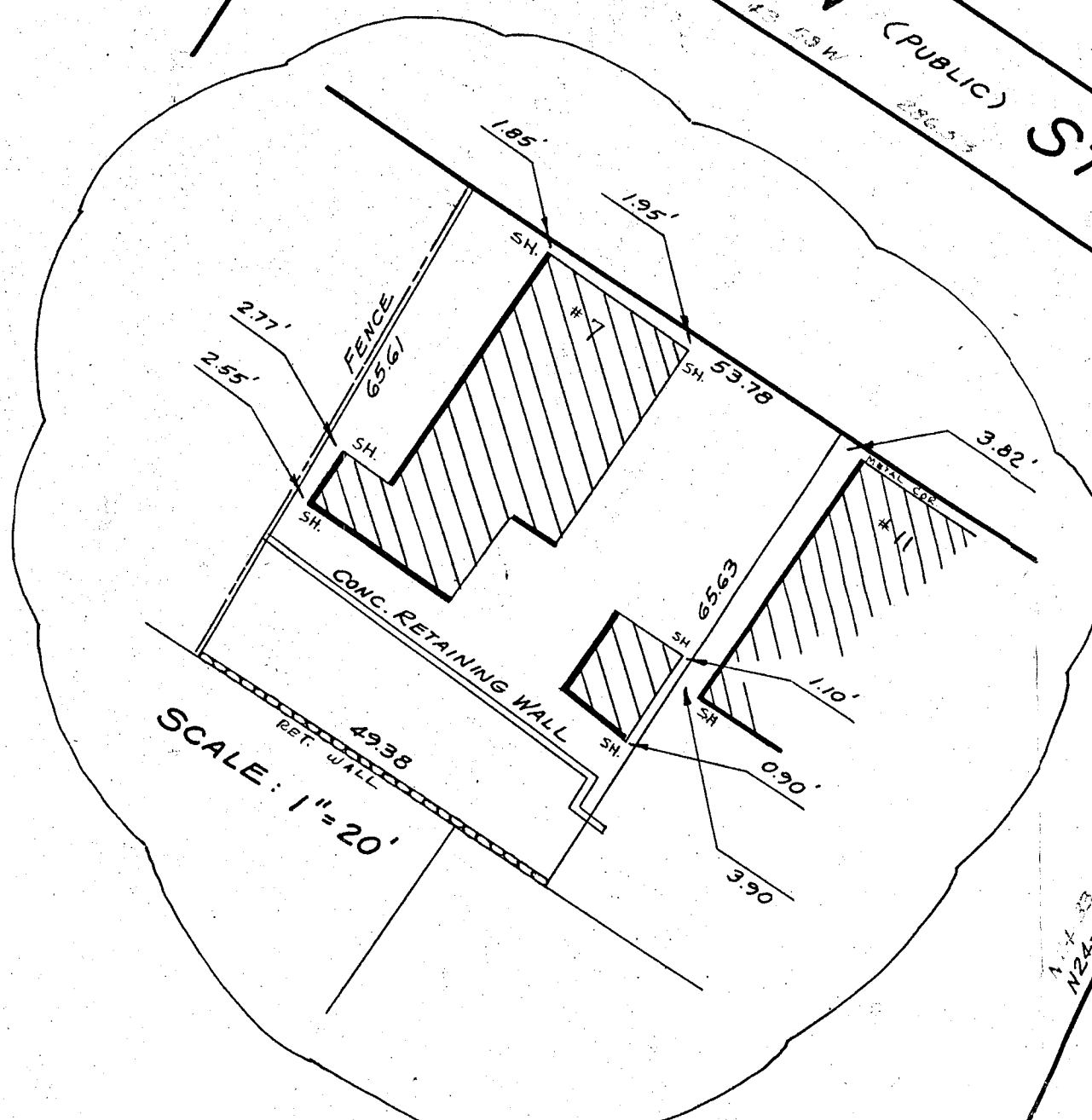
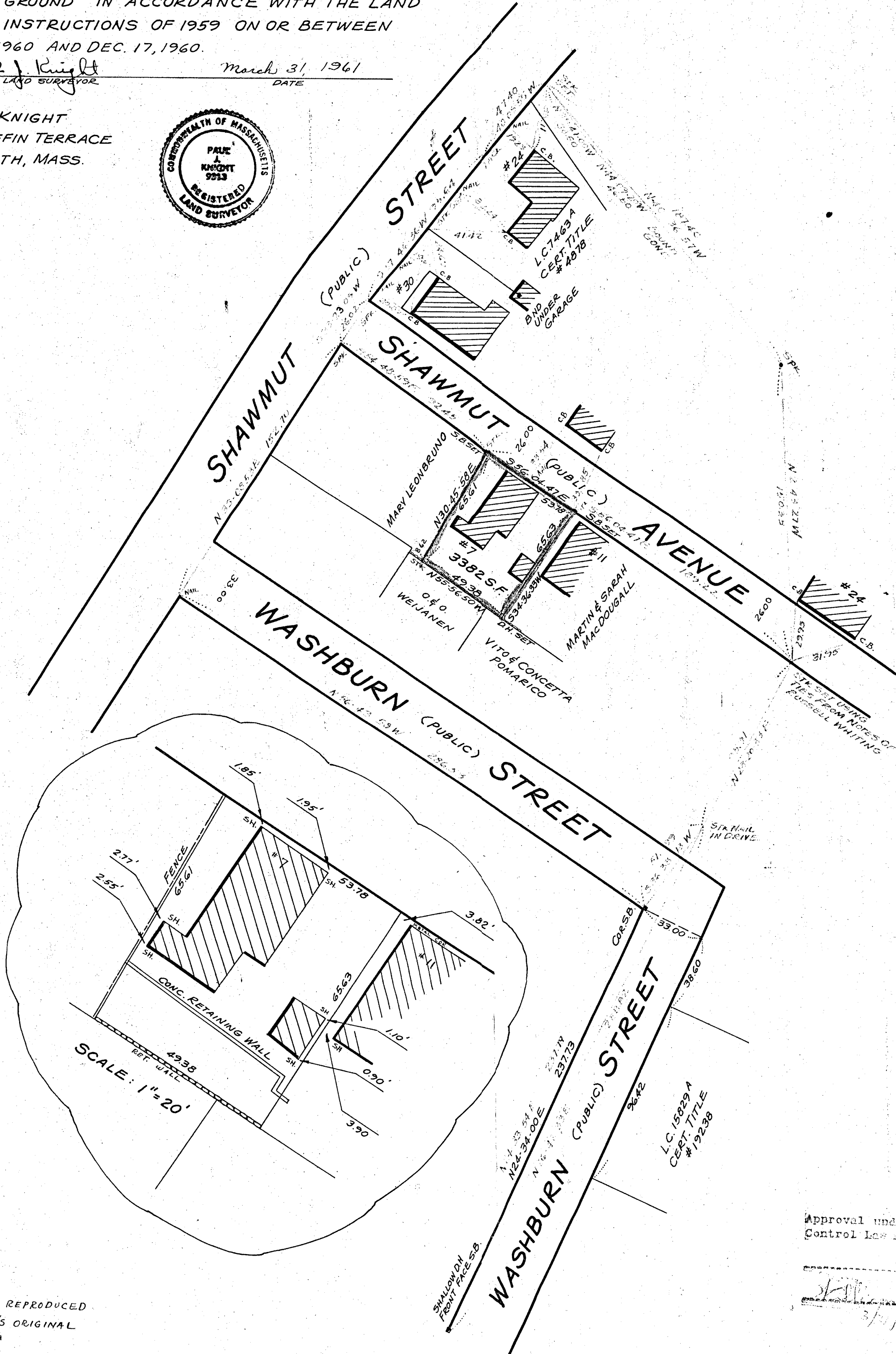
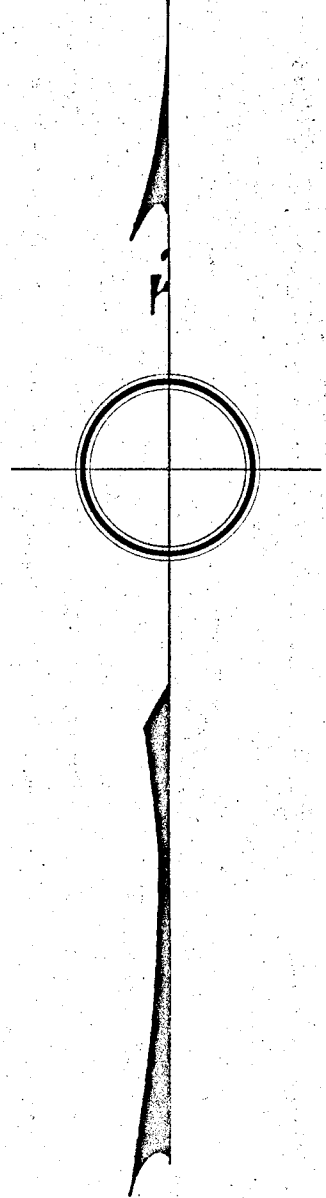
PAUL J. KNIGHT - REG. SURV.

WEYMOUTH, MASS.

I CERTIFY THAT THIS ACTUAL SURVEY WAS MADE  
ON THE GROUND IN ACCORDANCE WITH THE LAND  
COURT INSTRUCTIONS OF 1959 ON OR BETWEEN  
DEC. 10 1960 AND DEC. 17, 1960.

Paul J. Knight March 31, 1961  
REGISTERED LAND SURVEYOR DATE

PAUL J. KNIGHT  
56 GRIFFIN TERRACE  
WEYMOUTH, MASS.



NOTE:  
L.C. CASE 7463 A REPRODUCED  
FROM R.H. WHITING'S ORIGINAL  
FIELD NOTES.

Approval under the Subdivision  
Control Law not required  
Chairman  
Secretary  
3/31/61

#993

OWNER: NANCY C. FREDERICK