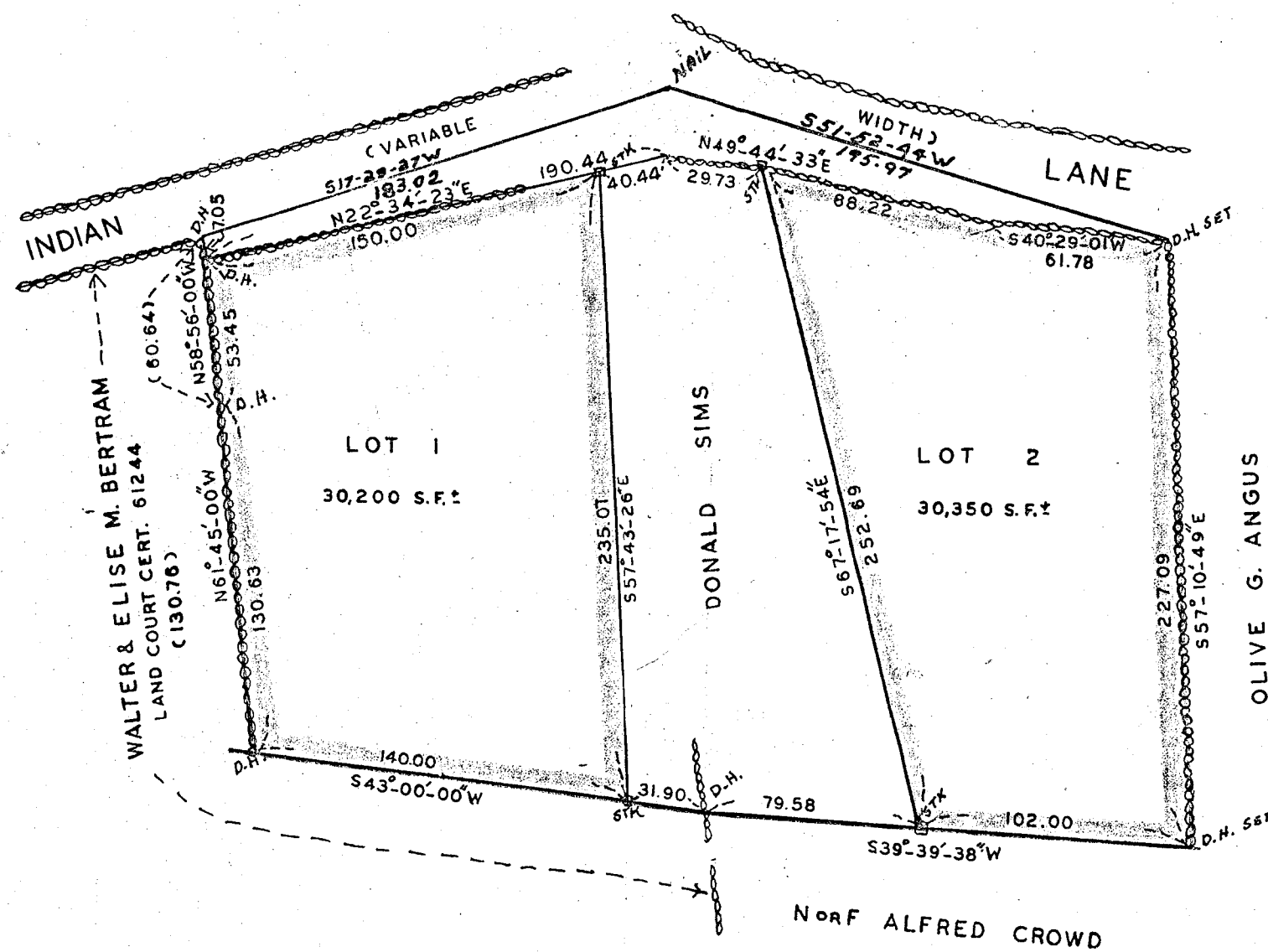
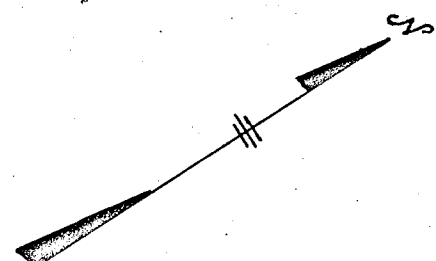
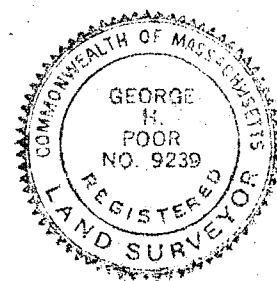


PLAN OF LAND IN
CANTON
 NORFOLK COUNTY, MASS.

SCALE 1" = 60' APRIL 27, 1961

GEORGE H. POOR, SURVEYOR
 MANSFIELD, MASS.



APPROVAL UNDER THE SUBDIVISION
 CONTROL LAWS NOT REQUIRED ON
 LOTS 1 & 2

I CERTIFY THAT THIS ACTUAL SURVEY
 WAS MADE ON THE GROUND IN ACCORDANCE
 WITH THE LAND COURT INSTRUCTIONS OF
 1959 BETWEEN JUNE 10 AND JULY 15, 1959,
 THIS SURVEY HAS BEEN REEXAMINED THIS
 DAY AND ALL DRILL HOLES AND STAKES SHOWN
 ON THIS PLAN WERE FOUND.

George H. Poor

 77 SOUTH MAIN ST.
 MANSFIELD, MASS.
