

Land Court Case 2494

William J. Buckler  
Elizabeth K. Buckler

Lot 525

Lot 527

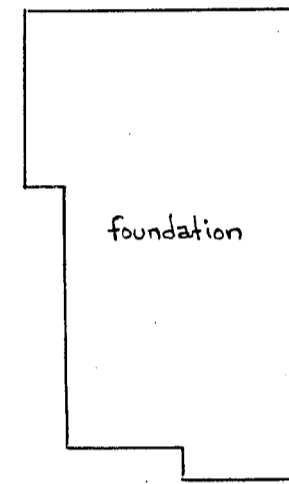
N60° 52' 30" E 101.30

213.39

112.00

EAST STREET  
(Public Variable width)

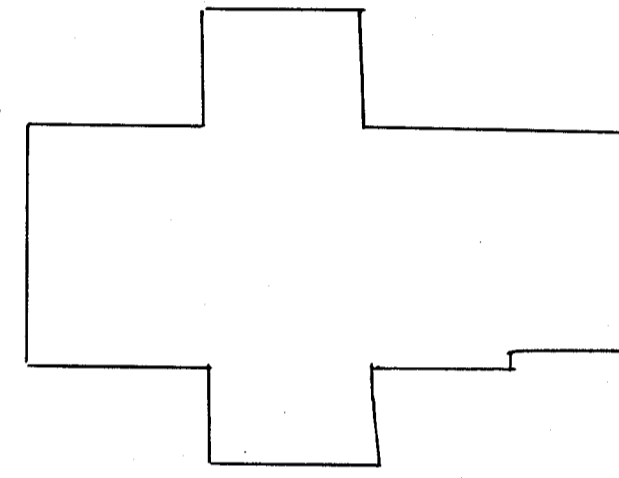
N40° 20' 00" W  
TS.20



foundation

N25° 07' 30" W  
100.00

Mary M. Dacey  
Anna T. Dacey  
Catherine P. Dacey



concrete bound with ch.  
set

R=35.00  
T=28.75  
L=48.13

Lot 94 A  
8984 Sq. ft.

Lot 94 B

52.83

N60° 52' 30" E

539.83

JEFFERSON STREET (Public 40 feet wide)

RUSTCRAFT ROAD (Public)

Land Court Case 5320

Plan of Land in  
**DEDHAM, MASS.**

Scale: 1 inch = 20 feet

Pilling Engineering Company, Inc.  
26 Norfolk St. Dedham, Mass.

March 6, 1961

Approval under Subdivision Control Law  
not required

I certify that this actual survey was  
made on the ground in accordance with the  
Land Court Instructions of 1959 on March 2,  
1961

March 6, 1961

*Howard L. Millard*  
Registered Land Surveyor

\_\_\_\_\_  
\_\_\_\_\_  
DEDHAM PLANNING BOARD