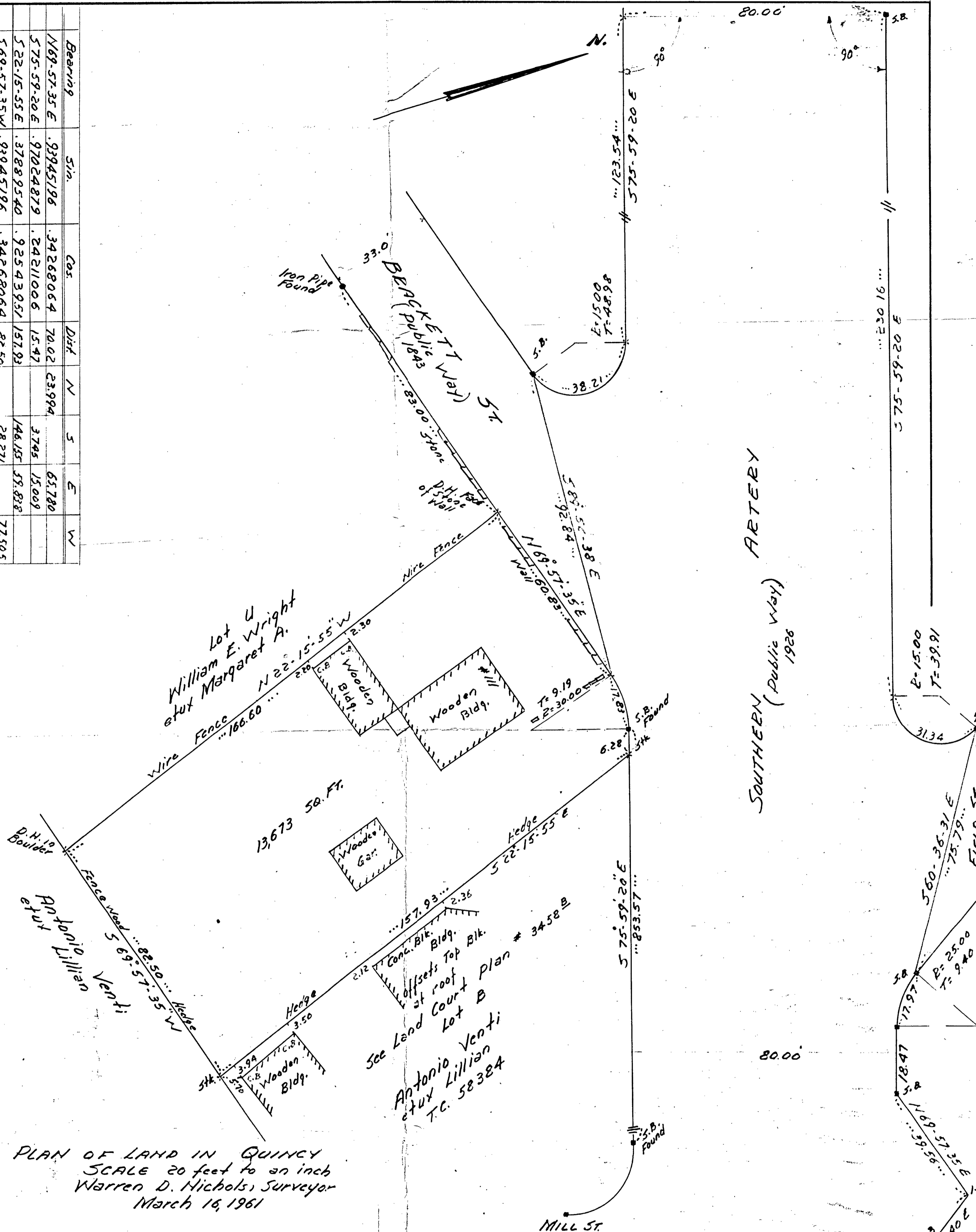


Bearing	Sin.	Cos.	Dist.	N	S	E	W
N 69° 57' 35" E	.93945196	.34268064	70.02	23.994		65.780	
S 75° 59' 20" E	.97024879	.24211006	15.47		3.745	15.009	
S 22° 15' 55" E	.37889540	.92543951	157.93		146.155	59.838	
S 69° 57' 35" W	.93945196	.34268064	82.50		28.271	77.505	
N 22° 15' 55" W	.37889540	.92543951	166.60		154.178	63.124	
				178.172	178.171	140.627	140.629



PLAN OF LAND IN QUINCY
SCALE 20 feet to an inch
Warren D. Nichols, Surveyor
March 16, 1961

I certify that this actual survey was made
on the ground in accordance with the Land
Court Instructions of 1959 on March 11, 1961

Warren D. Nichols
29 Saville St,
Quincy, Mass.

Owner of land: Quincy Bowl Realty Corporation

Approval under subdivision
control law not required

Date MAR. 20, 1961

James E. Lee
Planning Director